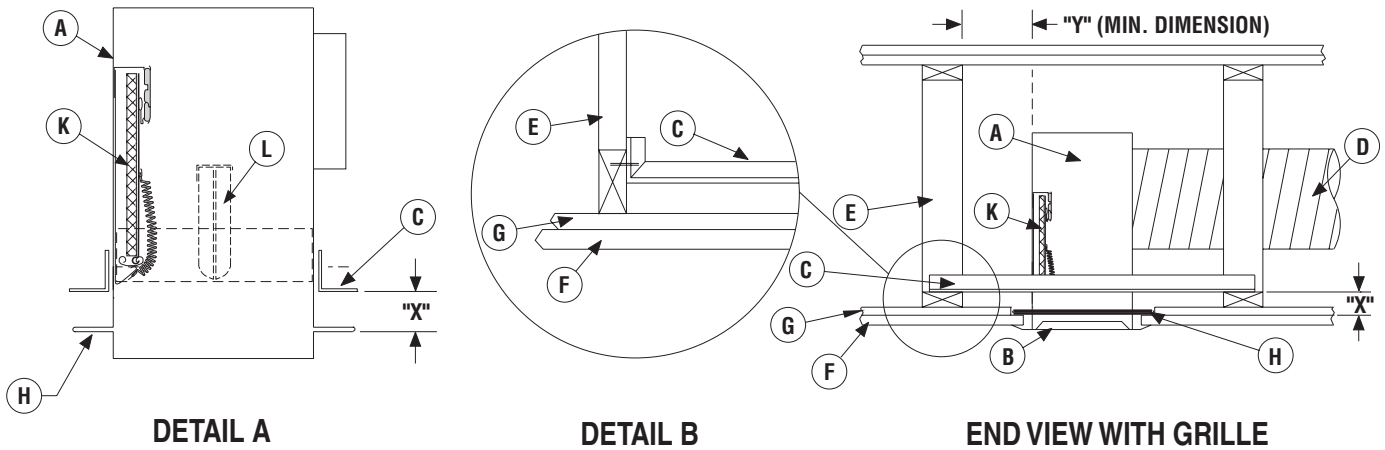


- (A) Steel Register box (boot),
Min. 26 ga. (0.551) uninsulated.
Min. 28 ga. (0.474) insulated.
- (B) Steel frame Grille/Register, 26 ga.
(0.55) minimum, see note 6
- (C) 3/4" x 3/4" x 16 ga. (19 x 19 x 1.61) or
1 1/2" x 1 1/2" x 22 ga (38 x 38 x 0.85)
Support Angle (2 sides), see notes 2 & 3
- (D) Flex Duct UL Classified Air Duct (Class 0 or 1)
- (E) Wood Truss (refer to specific UL Design No.)
- (F) 5/8" (16) Gypsum Wallboard
(refer to specific UL Design No.)
- (G) RC Channel
- (H) Plaster Flange
- (K) Ceiling Damper (1 blade)
- (L) Alternate Ceiling Damper (2 blades)

Model	"Y"
0758	2" (51)
0759	2" (51)
0760	4" (102)
0761	2" (51)
0762	4" (102)

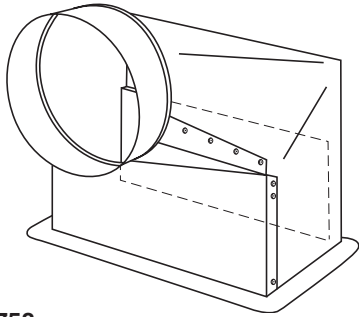


NOTES:

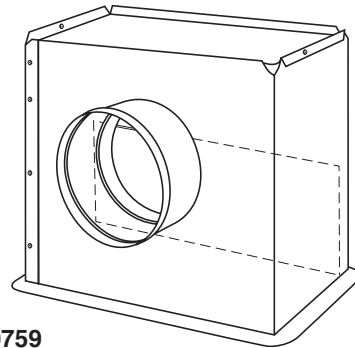
- Before installing, open damper blades and install fusible link between spring loaded wire clips. Do not bend or deform clips after assembly. If dampers are provided with link tabs instead of wire clips, install link and bend tabs to secure link in position.
- Attach 3/4" x 3/4" x 16 ga. (19 x 19 x 1.61) or 1 1/2" x 1 1/2" x 22 ga (38 x 38 x 0.85) support angles to steel register box with a minimum of two #8 screws or 3/16" (5) dia. steel pop rivets or spot welds each side. Distance from bottom of angle to bottom of plaster flange (X) should be the combined thickness of the wood truss member and the RC channel (See Detail A).
Make sure fasteners do not interfere with damper operation.
- Install assembly between trusses as shown in End View and attach support angles to truss lower members using 1 1/4" (32) long type S steel screws or similar. See Detail B for alternate support angle attachment method.
- Ceiling penetrations should be located between adjacent trusses and RC channels. If required, a maximum of one RC channel may be cut or notched to enable proper damper location. The clearance between the damper assembly and the cutout in the ceiling material shall be a maximum of 1/8" (3) on any side.
- Flex duct shall be UL Classified Air Duct Class 0 or Class 1 and shall be attached to the plenum collar with steel clamps, plastic straps, or minimum 18 gauge steel wire.
- The grille/register frame shall be 26 gauge (0.55) minimum steel and shall be attached with a minimum of two #8 x 1 1/4" (32) min. screws through the ceiling material and into the plaster flange.
- Refer to UL Fire Resistance Directory Vol. I for details on UL Floor/Ceiling Design No.'s L550, L574, L579 and Roof/Ceiling Design No.'s P531, P545, 1 Hour Fire Rating.



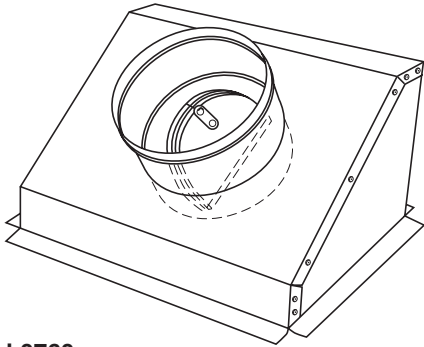
MODELS:



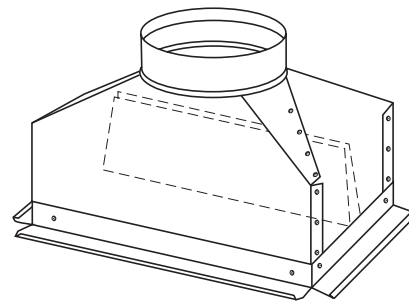
Model 0758
 90° Side Inlet. Tapered Register Box
 Rectangular ceiling damper
 Min. size: 8" x 4" (203 x 102), 5" (127) inlet
 Max. size: 14" x 8" (356 x 203), 10" (254) Inlet



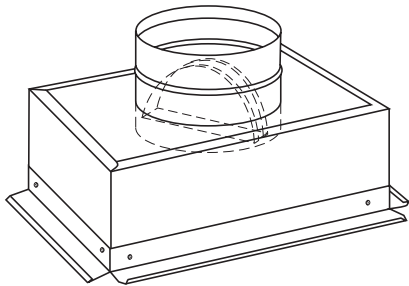
Model 0759
 90° Side Inlet. Insulated Register Box
 Rectangular ceiling damper.
 Min. size: 8" x 4" (203 x 102), 4" (102) dia. inlet
 Max. size: 12" x 12" (305 x 305), 10" (305) dia. inlet



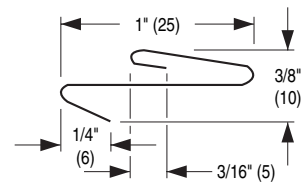
Model 0760
 45° Inlet. Insulated Register Box
 Round ceiling damper in inlet collar.
 Min. size: 8" x 4" (203 x 102), 5" (127) dia. inlet
 Max. size: 14" x 6" (356 x 152), 8" (229) dia. inlet



Model 0761
 Top Inlet. Tapered Register Box
 Rectangular ceiling damper.
 Min. Size: 8" x 4" (203 x 102), 4" (102) dia. inlet
 Max. size: 12" x 12" (305 x 305), 10" (305) dia. inlet



Model 0762
 Top Inlet. Insulated Register Box
 Round ceiling damper in inlet collar.
 Min. size: 8" x 4" (203 x 102), 4" (102) dia. inlet
 Max. size: 14" x 8" (356 x 203), 8" (254) dia. inlet



Standard 26 Ga. Boot Rail

Alternate installation using standard boot rail.

Models 0760 and 0762 only.

Damper may be installed using standard boot rail. Rails to be installed on opposite sides of boot and attached to the bottom cord of the truss using 16D nails or screws a minimum of 2" (51) long.

NOTES:

1. Models 0758, 0759 and 0761 incorporate a rectangular ceiling damper recessed a maximum of 2" (51) from the plaster flange.
2. Models 0760 and 0762 incorporate a round ceiling damper recessed in the inlet collar.
3. Option code CK adds UL Fire Temp Caulk.
4. Internally Insulated models 0759, 0760 and 0762 use 1 1/2" (38) duct liner R-6.3.

Dimensions are in inches (mm).



Houston, Texas
 Tel: 281-590-1172
 Fax: 281-590-3086

Las Vegas, Nevada
 Tel: 702-648-5400
 Fax: 702-638-0400

Toronto, Canada
 Tel: 416-744-3300
 Fax: 416-744-3360

Calgary, Canada
 Tel: 403-279-8619
 Fax: 403-279-5035