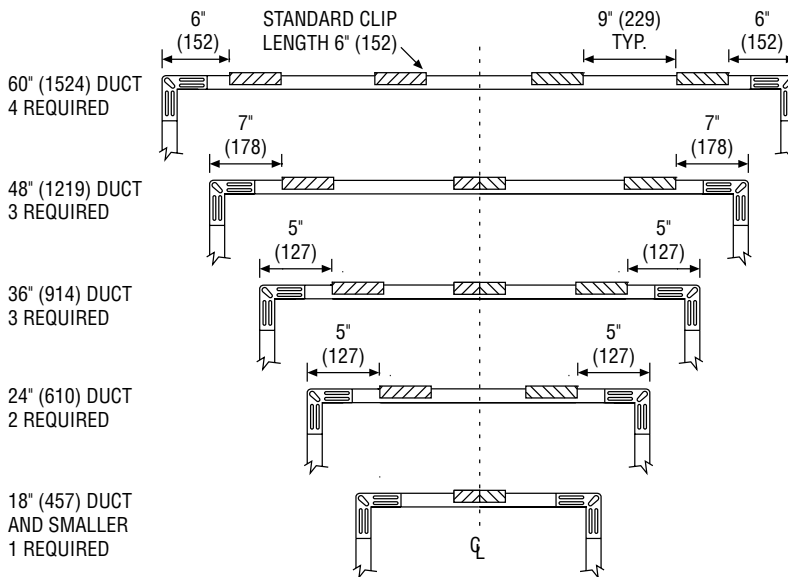
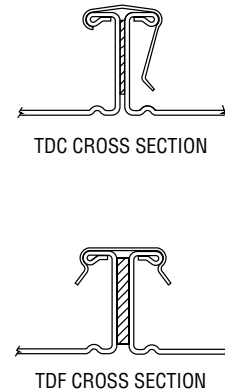


RECOMMENDED CLIP SPACING



CLEAT DETAILS



| Damper Type | Max. Size W x H | | No. Cleats Per Side |
|-------------|-----------------|-------------|---------------------|
| | (inches) | (mm) | |
| Curtain | 18 x 18 | 457 x 457 | 1 |
| | 24 x 24 | 610 x 610 | 2 |
| | 48 x 48 | 1219 x 1219 | 3 |
| | 60 x 60 | 1524 x 1524 | 4 |
| Multi-Blade | 18 x 18 | 457 x 457 | 1 |
| | 24 x 24 | 610 x 610 | 2 |
| | 36 x 48 | 914 x 1219 | 3 |

APPLICATION:

TDC (by Lockformer) and TDF (by Engle) are approved as breakaway connections for joining the fire damper sleeve and the duct. The slip joints shown in standard installation instructions for curtain type fire dampers, multi-blade fire dampers and combination fire/smoke dampers may be replaced by one of these systems.

INSTALLATION:

TDC and TDF roll-formed 4-bolt flanged connections assembled per the manufacturers instructions using gaskets, metal cleats 6" (152) long with spacing as shown and four 3/8" (9.5) metal nuts and bolts. See also the TDC or TDF addendum to the SMACNA Duct Construction Standards.



Houston, Texas
Tel: 281-590-1172
Fax: 281-590-3086

Ft. Lauderdale, Florida
Tel: 954-351-2444
Fax: 954-351-2440

Toronto, Canada
Tel: 416-744-3300
Fax: 416-744-3360

Calgary, Canada
Tel: 403-279-8619
Fax: 403-279-5035