



**CEILING RADIATION DAMPER**  
 FOR WOOD TRUSS CEILING ASSEMBLIES  
 GRILLE MOUNT • STEEL PLENUM • SIDE INLET  
**MODEL: 0756**



**QUALIFICATIONS:**

- **UL 263 CLASSIFIED CEILING RADIATION DAMPER. Category CABS. (File # R9660)**  
 1 hour rated for use in UL floor/ceiling design numbers L550/L562/L574/L579 and roof/ceiling design numbers P531/P538/P545 (Similar in construction to designs L521/L546 and P522).
- **Meets NFPA 90A requirements**

**DESCRIPTION:**

Ceiling dampers are designed to function as a heat barrier in air handling openings penetrating fire resistive membrane ceilings. Model 0756 has been especially designed and tested to provide protection and simple installation in specific UL design wood truss ceiling assemblies.

The 0756 assembly consists of a rectangular ceiling damper recessed in a sheet metal register box (boot) with a round inlet collar, that accommodates a steel grille register or diffuser.

**CONSTRUCTION:**

1. UL listed fusible link, 212°F (100°C) standard.
2. Blades: 22 ga. (0.85) G60 roll-formed galvanized steel.
3. Blade Insulation: Non-asbestos UL Classified.
4. Damper frame: 22 ga. (0.85) G60 galvanized steel.
5. Steel plenum/sub-frame: 26 ga. (0.55) min. with round connection collar.
6. UL Classified Class 0 or I Flexible Air Duct connection by others.
7. Plaster flange.
8. Steel grille/register/diffuser (by Nailor or others). Bottom of damper sub-frame is flush with ceiling. Standard depth for grille clearance is 2 1/2" (64).

**OPTIONS:**

1. Non-standard temp. UL listed fusible link
  - 165°F (74°C)
2. Optional Damper Styles:
  - 0714 Single Blade Damper
  - 0720 Low Profile Curtain Damper
3. Installation Support Angles. 26" (660) long.
  - ISA 2 @ 3/4" x 3/4" x 16 ga. (19 x 19 x 1.6) or
  - ISB 2 @ 1 1/2" x 1 1/2" x 22 ga. (38 x 38 x 0.85)

**NOTES:**

**Minimum Size:** 6" W x 4" H (152 x 102)

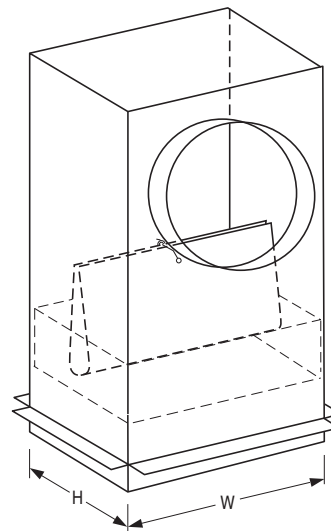
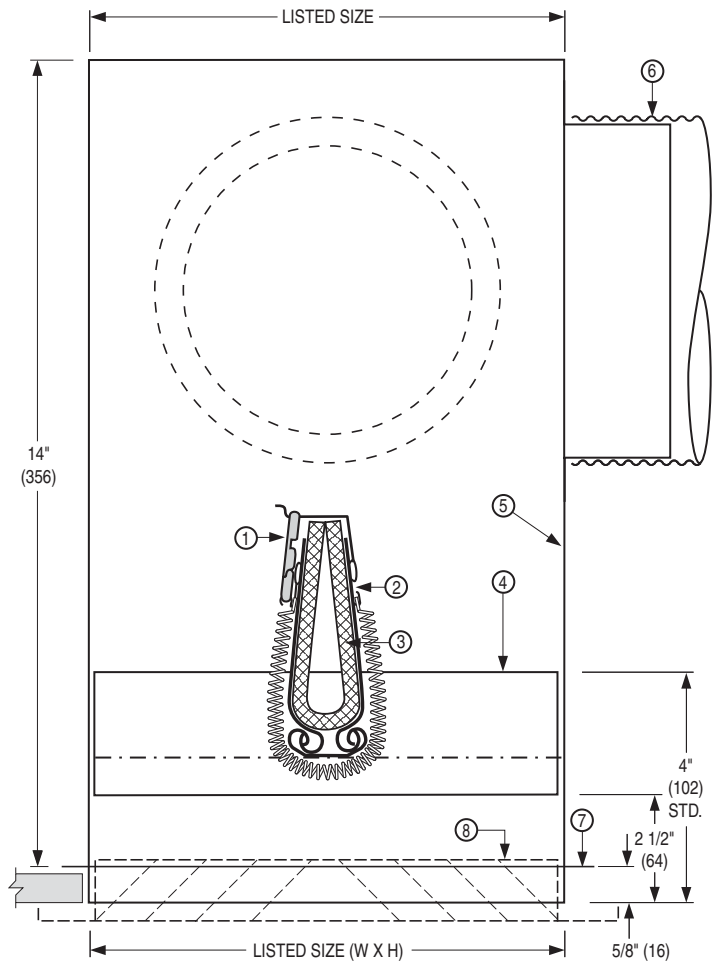
**Maximum Size:** 16" W x 12" H (406 x 305)

**Available Duct Connection Size:**

4" through 10" (102 – 254) dia.

Building code and UL Classification require damper installation in accordance with manufacturers instructions.

See Doc. IOM-CRD0756-INST.



**Note:**

0716 style damper shown. 0714 Single Blade or 0720 Low Profile Curtain Damper also available. See Options #2.

Dimensions are in inches (mm).

<b>SCHEDULE TYPE:</b>					
<b>PROJECT:</b>					
<b>ENGINEER:</b>		<b>DATE</b>	<b>B SERIES</b>	<b>SUPERSEDES</b>	<b>DRAWING NO.</b>
<b>CONTRACTOR:</b>		12 - 12 - 11	0700	10 - 12 - 06	0756