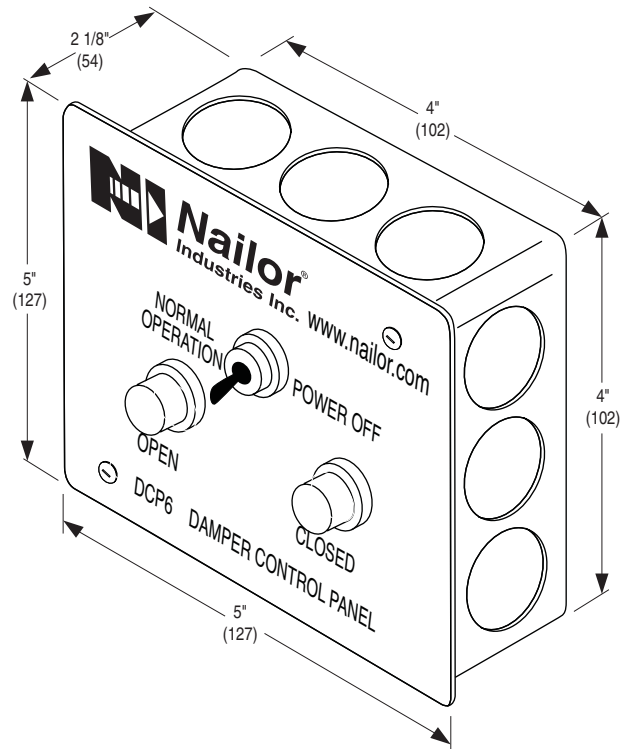




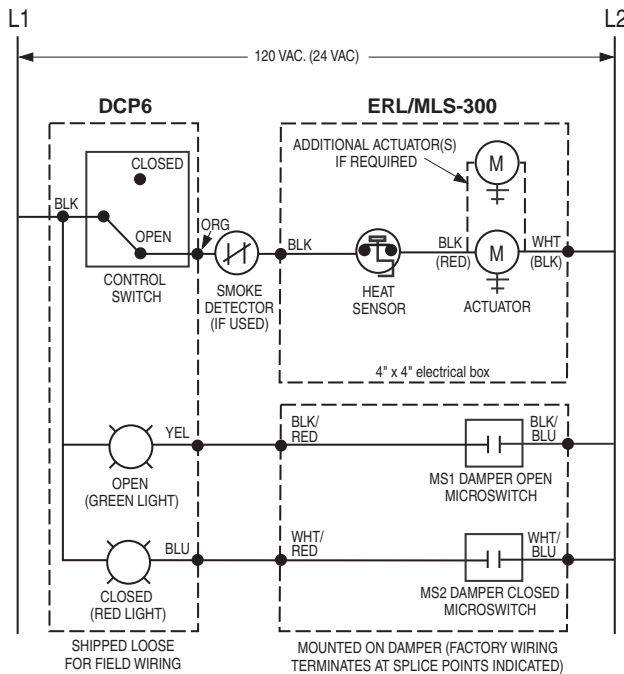
DAMPER CONTROL PANEL
 FOR USE WITH SMOKE AND
 COMBINATION FIRE/SMOKE DAMPERS
MODEL: DCP6 TOGGLE SWITCH WITH LIGHTS

The DCP6 is a toggle switch operated control panel with indicator lights for use with all Nailor Smoke and Combination Fire/Smoke Dampers. The two position toggle switch provides the ability to "cycle test" the damper by interrupting power to the damper actuator. With the toggle switch in the "off" position, power is disconnected and the damper will travel to its "fail" position. The indicator lights on the DCP6 panel provide a visual confirmation of the damper position when connected to the MLS-300 Position Indicator Package.

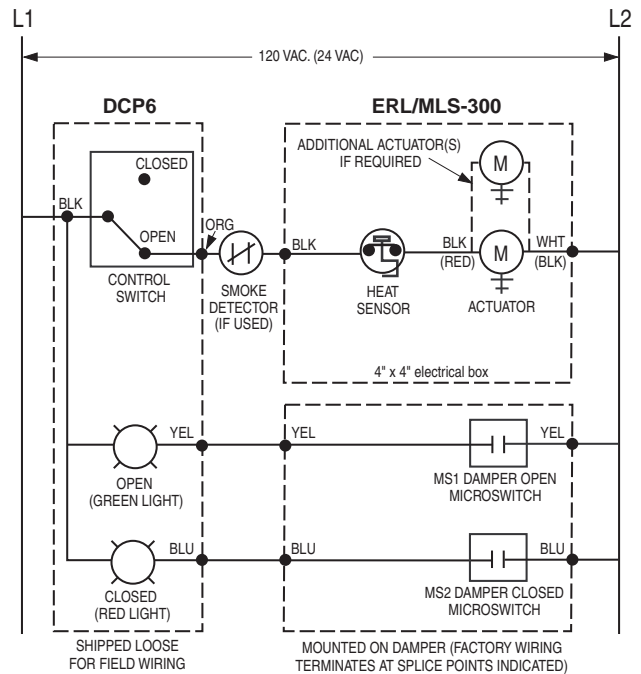
The DCP6 is shipped loose for field mounting and wiring either near the damper or in a remote location.



WIRING DIAGRAMS:



DCP6 for combination fire/smoke dampers with MLS-300 (Honeywell rotary cam type) position indicator package



DCP6 for combination fire/smoke dampers with MLS-300 (Nailor or Honeywell built-in aux. switches) position indicator package

SCHEDULE TYPE:	
PROJECT:	
ENGINEER:	
CONTRACTOR:	

Dimensions are in inches (mm).

DATE	B SERIES	SUPERSEDES	DRAWING NO.
8 - 10 - 10	FD-ACC	NEW	DCP6