



DYNAMIC CURTAIN TYPE FIRE DAMPER
1 1/2 HR. LABEL • VERT. OR HORIZONTAL
FOR USE IN DYNAMIC OR STATIC SYSTEMS
MODEL D0140 TYPE CSR



QUALIFICATIONS:

- UL 555 Classified Fire Damper. 1 1/2 hr. label. (File # 9492).
- CAN/ULC-S112 Fire Damper Assemblies.
- Meets all the requirements of UL and NFPA 90A for fire dampers in dynamic HVAC systems.
- Meets the requirements for BOCA, SBCCI, UBC, IBC and associated local building codes.
- Meets all the requirements of NBC.
- California State Fire Marshal Listing No. 03225-0935:113.
- City of New York Board of Standards and Appeals. Cal. No. 460-88-SA.
- Maximum velocity 2000 fpm @ 4" w.g.

The D0140 curtain fire damper is UL approved for use where local building codes require the protection of HVAC ductwork penetrations in walls, partitions or floors that have a fire resistance rating of up to 2 hours. The D0140 is classified for use in dynamic "fans on" systems where the HVAC system remains operative in the event of a fire. Damper closure under airflow is assured.

Type CSR square or rectangular fire dampers use full enclosure and transition collars to place the custom blade pack and frame out of the airstream, providing 100% free area.

STANDARD SPECIFICATION:

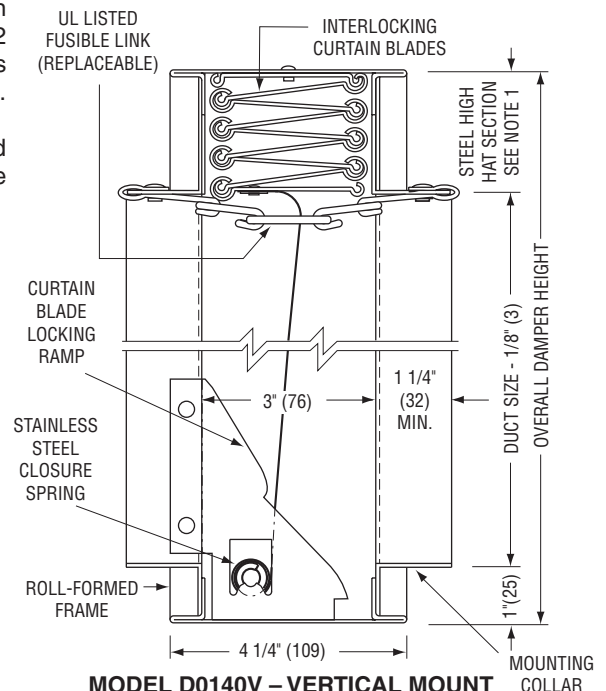
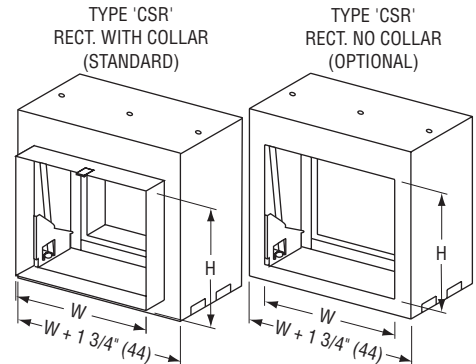
- FRAME:** 4 1/4" (108) wide, 22 ga. (0.85) roll-formed G60 galvanized steel.
- BLADES:** Curtain type interlocking blades, 22 ga. (0.85) roll-formed G60 galvanized steel.
- ENCLOSURE:** 22 ga. (0.85) galvanized steel.
- FUSIBLE LINK:** 165°F (74°C) standard. UL Listed. 212°F (100°C) available.
- BLADE CLOSURE:** Stainless steel closure springs and galvanized steel locking ramps.
- MINIMUM SIZE:** 4" x 4" (102 x 102).
- MAXIMUM SIZE:** Single Section
 Vertical or Horizontal mount: 22" x 20" (559 x 508).
 Multiple Section Assembly
 Vertical mount: 70" x 20" (1778 x 508). See note 2.
 Horizontal mount: Contact factory.

OPTIONS:

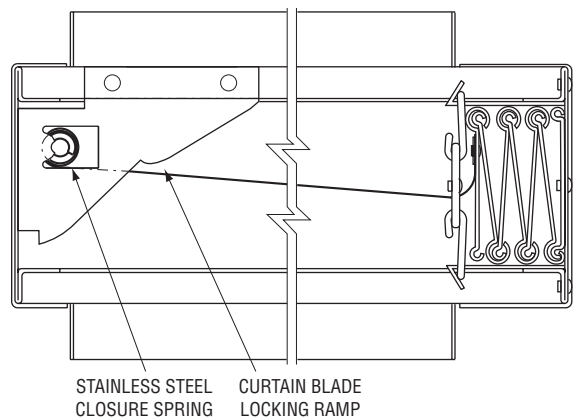
- Non-standard temperature fusible link. Specify _____.
- LP Unsealed. Suitable for low pressure systems.
- HP Sealed. Suitable for medium/high pressure systems. Externally caulked. (Up to 6" w.g./1.5 kPa).
- Factory Sleeve. Available in 10 (3.5) through 22 ga. (0.85) galvanized steel and in lengths required for application. Specify : _____ length. _____ ga.

NOTES:

1. See sizing chart for relationship of duct size and damper size. Refer to drawings SC1 and SC2.
2. Individual sections of multiple section assembly not to exceed 18" x 24" (457 x 610).
3. Building code and UL Classification require damper installation in accordance with manufacturer's instructions. Refer to document IOM-FDINST.



MODEL D0140V – VERTICAL MOUNT



MODEL D0140H – HORIZONTAL MOUNT

SCHEDULE TYPE:

PROJECT:

ENGINEER:

CONTRACTOR:

Manufactured by members of S.M.W.I.A.
 Dimensions are in inches (mm).

DATE	B SERIES	SUPERSEDES	DRAWING NO.
10 - 6 - 06	FD	3 - 1 - 05	D0100-4