

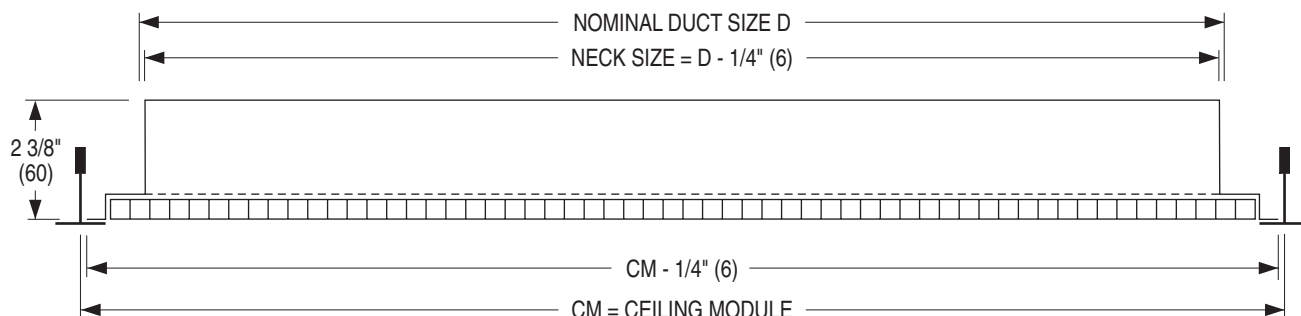


# EGGCRATE RETURN CEILING DIFFUSERS

## SQUARE NECK (FULL SIZE)

### MODELS: 4260, 4260AA

**TYPE L Lay-in T-Bar**



**Imperial Module & Metric Module Table**

Ceiling Module CM		Nominal Duct Size D	
Imperial Modules	Metric Modules	Square Neck	
		Imperial Modules (in.)	Metric Modules (mm)
12 x 12	300 x 300	10 x 10	250 x 250
24 x 12	600 x 300	22 x 10	550 x 250
20 x 20	500 x 500	18 x 18	450 x 450
24 x 24	600 x 600	22 x 22	550 x 550
48 x 24	1200 x 600	46 x 22	1150 x 550

**DESCRIPTION:**

1. Material: Corrosion-resistant steel frame with 1/2" x 1/2" x 1/2" (13 x 13 x 13) aluminum grid core (Model 4260 is standard).
2. Full face eggcrate architecturally pleasing design provides a high free area for high volume capacity with low sound levels and pressure drop. This version is for ducted or ductless return applications. Features a dedicated frame assembly which has a neck that is 2" (51) less than the ceiling module size for maximum free area.
3. Removable core. Secured with four semi-concealed screws.
4. Optional damper for balancing is supplied with steel barbed S-clips for easy field mounting directly on the neck. Adjustment is with a flat blade screwdriver through the face.
5. Standard finish is AW Appliance White.

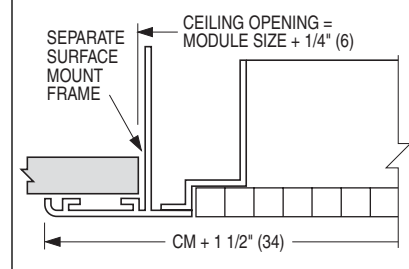
**OPTIONS:**

- Aluminum core with aluminum frame. (Model 4260AA).
- Finish:
- BA Black back pan with Appliance White face.
- SP Special \_\_\_\_\_.

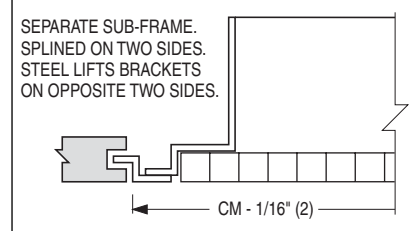
**ACCESSORIES** (ordered separately):

- OBD Type SL. Steel opposed blade damper.
- OBD-A Type SL. Aluminum opposed blade damper.

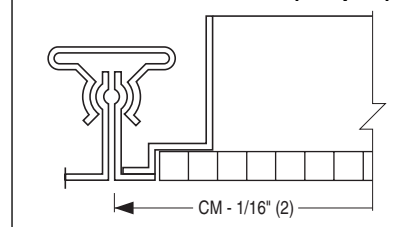
**TYPE S Surface Mount**



**TYPE SP Spline**



**TYPE M Metal Pan (Snap-in)**



<b>SCHEDULE TYPE:</b>
<b>PROJECT:</b>
<b>ENGINEER:</b>
<b>CONTRACTOR:</b>

Dimensions are in inches (mm).

<b>DATE</b>	<b>B SERIES</b>	<b>SUPERSEDES</b>	<b>DRAWING NO.</b>
5 - 21 - 03	4200	NEW	4260-1