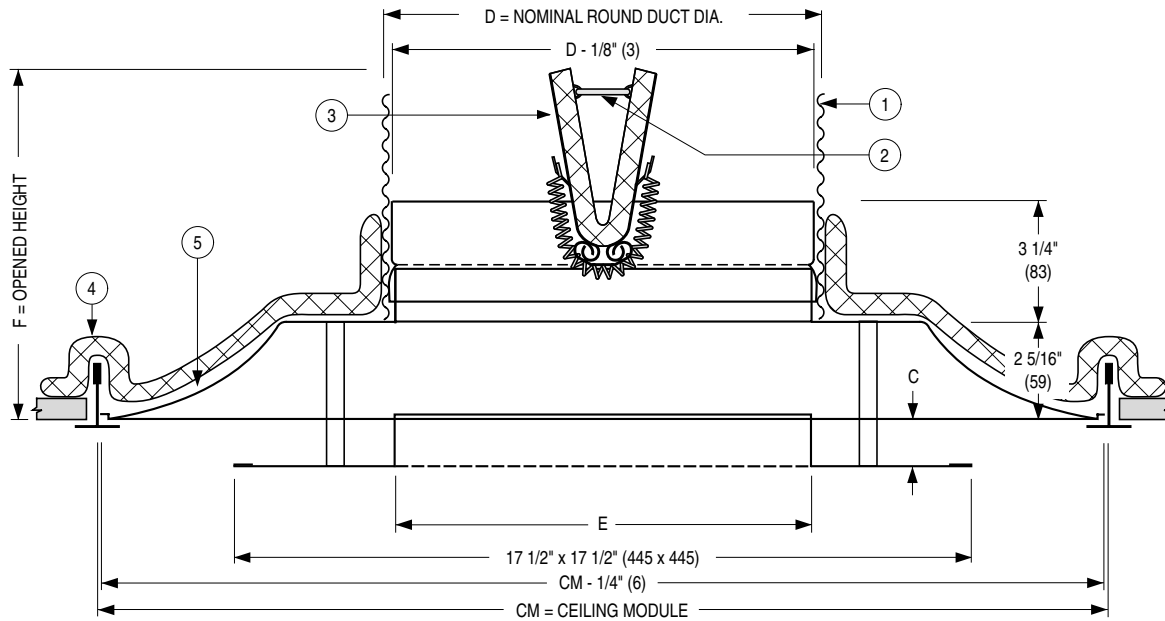




FIRE RATED CEILING DIFFUSER
FIXED PERFORATED DOWNBLAST
STEEL • SQUARE FACE • ROUND NECK
MODEL: UNI-PDFR

TYPE L LAY-IN FRAME



CATEGORY
BZZU



CATEGORY
40U18.1-1/2A



Listed Neck Size	Imperial Modules				Metric Modules							
	Imperial Units (inches)		SI Units (mm)		SI Units (mm)							
	CM = 24 x 24				CM = 610 x 610				CM = 600 x 600			
	D	E	F	C	D	E	F	C	D	E	F	C
12	12		9 13/16		305		249		305		249	
14	14	11 1/4	10 13/16	1 3/16	356	286	275	30	356	286	275	30

ITEMS:

1. Flexible air duct (UL/ULC Class 0 or 1) connector or steel duct.
2. U.L. Listed fusible link. 212°F (100°C) standard.
3. Ceiling radiation damper/fire stop flap.
4. Ceramic fibre thermal blanket.
5. Corrosion resistant steel diffuser.

DESCRIPTION:

1. All models are classified for use in UL/ULC restrained or unrestrained floor/ceiling and or roof/ceiling assemblies which incorporate an exposed grid suspended ceiling (lay-in T-bar) with up to a 3 hour rating. For details of fire rated assemblies, see the current UL Fire Resistance Directory or ULC List of Equipment and Materials Vol. III Fire Resistant Ratings.
2. Especially designed for high airflow at minimum NC levels such as theatres and auditoriums, where conditions and floor to ceiling height are variable. Effective for heating and spot cooling. A circular perforated aperture in the diffuser face provides for both a horizontal and vertical apportion of the airflow. The horizontal portion has a 360° discharge pattern. The vertical portion provides a true and long downward projection.

3. The diffuser consists of stamped one-piece outer-cone which eliminates mitered corners and a heavy gauge inner face panel with a hemmed edge for strength and a clean appearance. Perforated face has 3/8" (10) diameter holes on 5/8" (16) staggered centers.
4. Standard finish is baked enamel. (Select color from finish option).

OPTIONS:

1. Non-standard temperature U.L. Listed fusible link.
 - 165°F (74°C) 286°F (141°C)
2. Finish:
 - BK Flat black AW Appliance white
 - SP Special _____.

For installation instructions, see drwgs. 4000-1A and 1B or 4000-2A and 2B.

SCHEDULE TYPE:

PROJECT:

ENGINEER:

CONTRACTOR:

Dimensions are in inches (mm).

DATE	B SERIES	SUPERSEDES	DRAWING NO.
5 - 5 - 99RR	4400	4400-7/4-98	4400-6