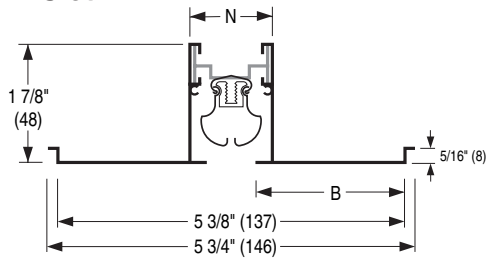


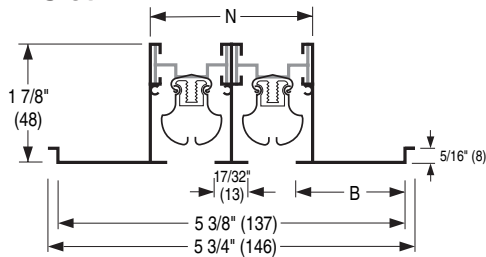


LINEAR SLOT DIFFUSERS
EXTRUDED ALUMINUM
FOR TECHZONE™ TYPE CEILINGS
9/16" (14) NARROW T-BAR LAY-IN
MODELS: 5075TZ SUPPLY AND 5075TZR RETURN
FRAME TYPE NT

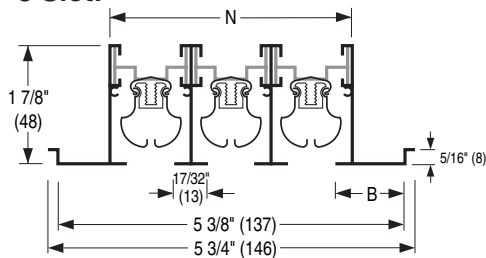
1 Slot:



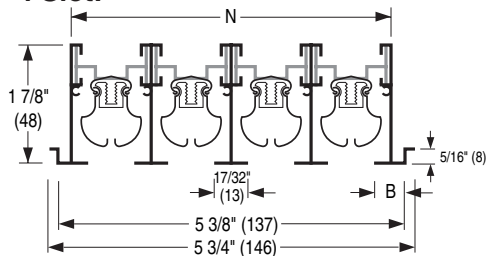
2 Slot:



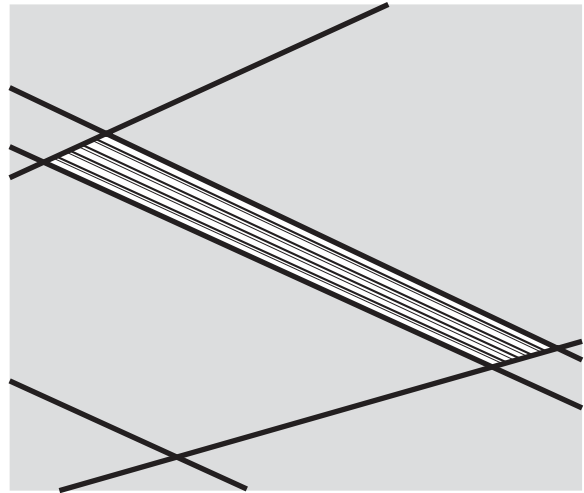
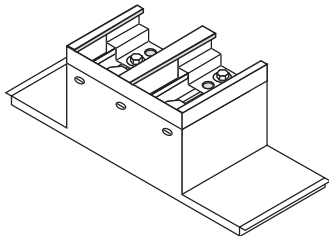
3 Slot:



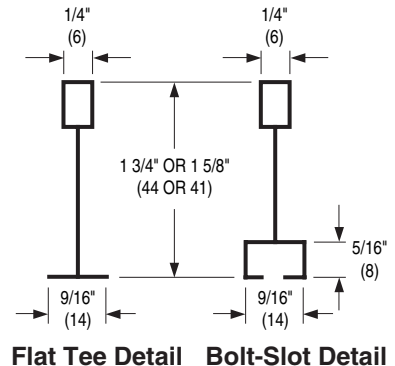
4 Slot:



C - Flat End Cap



No. of Slots	Border (DIM. B)	Neck (DIM. N)
1	2 5/16 (59)	1 3/8 (35)
2	1 11/16 (43)	2 5/8 (67)
3	1 1/16 (27)	3 7/8 (98)
4	7/16 (11)	5 1/8 (130)



NOTES:

- Compatible with Armstrong® Techzone™ and USG Logix™ ceiling systems.
- Material: Extruded aluminum frame. Corrosion-resistant steel pattern controllers.
- 3/4" (19) nominal slot width. Available in 1, 2, 3, and 4 slots.
- Available in 24" (610), 30" (762), 36" (914), 48" (1219), 60" (1524) and 72" (1829) lengths. Ends are finished with Type CC flat end caps. Overall length is nominal ceiling module length minus 5/8" (16).
- This model accommodates both 9/16" (14) flat tees to provide a tegular appearance and 9/16" (14) Bolt-Slot (Fineline Type) regressed tees for a flush appearance with a tegular ceiling tile.
- The volume and direction of the discharge air can be adjusted by moving the pattern controllers.
- 5075TZR is a matching return diffuser and supplied without pattern controllers.
- The maximum length of the pattern controller is 36" (914). Diffusers longer than 36" (914) are provided with multiple pattern controller sections.
- Standard finish is AW Appliance White. Black pattern controllers.
- For performance data see Nailor catalog Model 5075.

OPTIONS:

FACTORY SUPPLIED PLENUM

- 5375TZ 5375TZI Insulated

See separate submittal for full specification and dimensional data.

SCHEDULE TYPE:		Dimensions are in inches (mm).			
PROJECT:					
ENGINEER:	DATE	B SERIES	SUPERSEDES	DRAWING NO.	
CONTRACTOR:	4 - 9 - 10	5000	8 - 12 - 09	5075TZ-3	