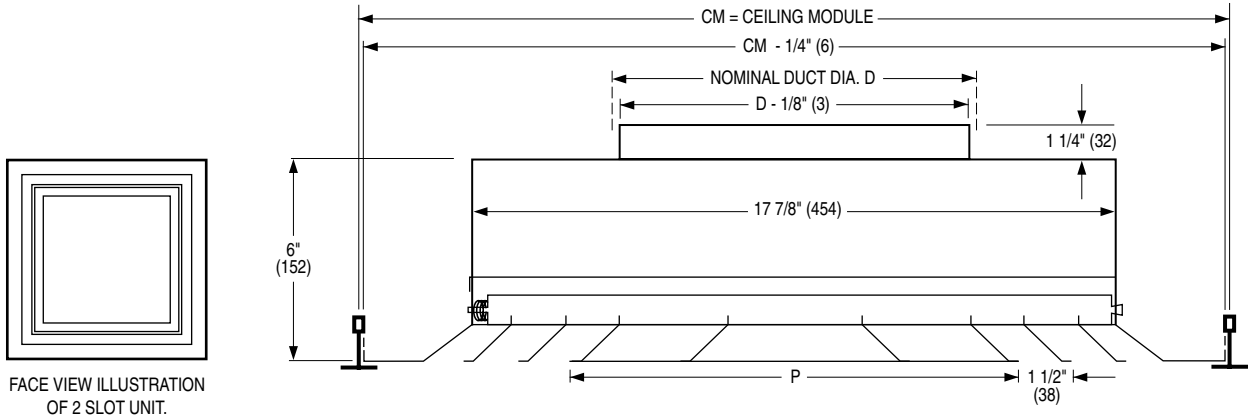


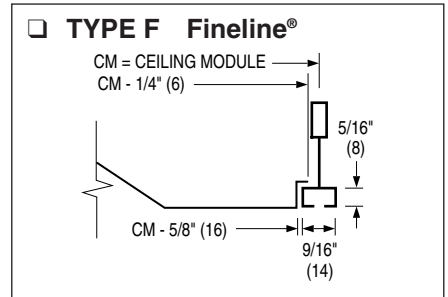


**ARCHITECTURAL CEILING DIFFUSER**  
**STEEL • ROUND NECK • PLAQUE FACE**  
**MODEL: 66UNI 24"x 24" CEILING MODULE**

**TYPE L Lay-in T-Bar**



Ceiling Module Size CM	No. of Slots	Nominal Round Duct Size D	Plaque Face P
24 x 24 (610 x 610)	1	6,8,10 (152, 203, 254)	18 5/16 (465)
	2	6,8,10,12 (152, 203, 254, 305)	15 5/16 (389)
	3	8,10,12,14 (203, 254, 305, 356)	12 5/16 (313)



**DESCRIPTION:**

1. Material: Corrosion resistant steel
2. Model 66UNI is a flush face architecturally appealing plaque diffuser available with 1, 2 or 3 perimeter slots. The 66UNI provides a tight horizontal air pattern from maximum to minimum airflow and is ideal for VAV applications.
3. The 66UNI has been designed specifically to integrate with 24" x 24" (610 x 610) module ceiling suspension systems. Available in two frame/border styles. Type L Lay-in for standard 15/16" (24) or 9/16" (14) flat face T-bar systems. Type F Fineline® for Narrow Regressed T-Bar ceiling suspension systems, commonly referred to as Bolt Slot or Fineline type T-Bar.
4. The 66UNI is provided with a deep plenum back pan to provide optimum performance by minimizing pressure drop and noise. The diffuser has a round neck collar for easy flexible duct connection.
5. Spring loaded removable core.
6. Standard finish is AW Appliance White.

*Fineline® is a registered trademark of USG Interiors Inc.*

**OPTIONS:**

- Special Finish. Specify: \_\_\_\_\_.
- EQT. Earthquake Tabs.

**ACCESSORIES:**

- 4250 Radial sliding blade damper.
- 4275 Radial Opposed blade damper.

<b>SCHEDULE TYPE</b>		Dimensions are in inches (mm).			
<b>PROJECT</b>					
<b>ENGINEER</b>	<b>DATE</b>	<b>B SERIES</b>	<b>SUPERSEDES</b>	<b>DRAWING NO.</b>	
<b>CONTRACTOR</b>	2 - 26 - 02	6600	NEW	66UNI-1	