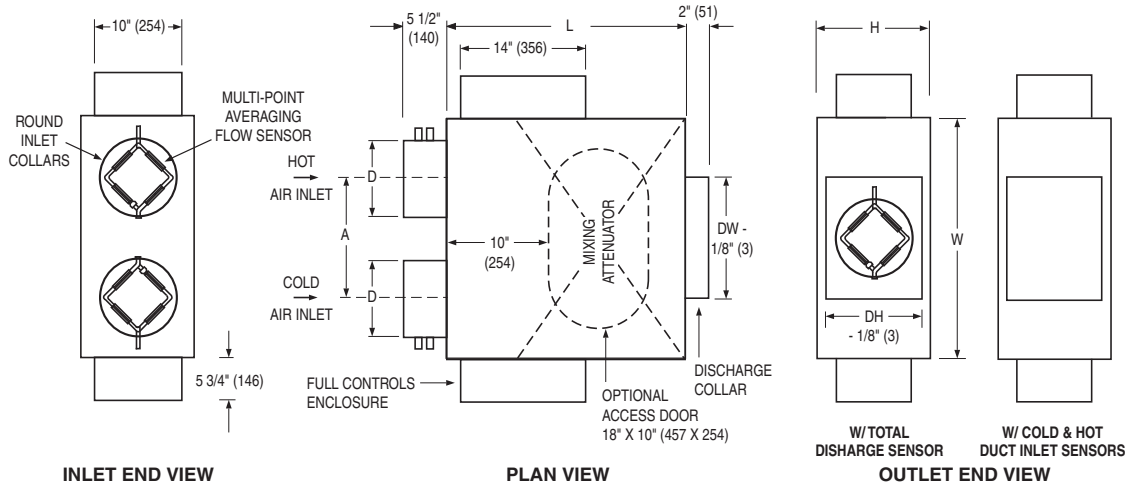




**DUAL DUCT TERMINAL UNIT  
WITH COMPACT MIXING ATTENUATOR  
DIGITAL OR ANALOG ELECTRONIC CONTROL  
MODELS: D3230 AND A3230**



**Dimensional Data**

Unit Size	Inlet Dia. D	Airflow Range cfm (l/s)	W	H	L	A	Outlet DW x DH
4	3 7/8 (98)	0 - 180 (0 - 85)	24 (610)	10 (254)	24 (610)	11 (279)	8 x 8 (203 x 203)
5	4 7/8 (124)	0 - 325 (0 - 153)	24 (610)	10 (254)	24 (610)	11 (279)	
6	5 7/8 (149)	0 - 450 (0 - 212)	24 (610)	10 (254)	24 (610)	11 (279)	
7	6 7/8 (175)	0 - 650 (0 - 307)	24 (610)	12 1/2 (318)	24 (610)	11 (279)	10 x 10 (254 x 254)
8	7 7/8 (200)	0 - 900 (0 - 425)	24 (610)	12 1/2 (318)	24 (610)	11 (279)	
9	8 7/8 (225)	0 - 1150 (0 - 543)	34 (864)	14 (356)	34 (864)	16 7/8 (410)	14 x 12 (356 x 305)
10	9 7/8 (251)	0 - 1500 (0 - 708)	34 (864)	14 (356)	34 (864)	16 7/8 (410)	
12	11 7/8 (302)	0 - 2050 (0 - 967)	34 (864)	16 (406)	34 (864)	16 7/8 (410)	18 x 14 (457 x 356)
14	13 7/8 (353)	0 - 2740 (0 - 1293)	42 (1067)	18 (457)	38 (965)	20 7/8 (511)	22 x 16 (559 x 406)
16	15 7/8 (403)	0 - 3680 (0 - 1737)	42 (1067)	18 (457)	38 (965)	20 7/8 (511)	24 x 18 (610 x 457)



**Standard Features:**

- 22 ga. (0.86) zinc coated steel casing, mechanically sealed, low leakage construction.
- Low leakage opposed blade dampers with blade and jamb seals (single blade on size 4, 5, 6). 90° rotation, CW to close. Damper leakage is less than 1% of the terminal rated airflow at 6" w.g. (1.5 kPa).
- 1/2" (13) dia. plated steel drive shaft. An indicator mark on the end of the shaft shows damper position.
- Integral mixing attenuator with baffles. 1 : 12 minimum mixing efficiency.
- Rectangular discharge collar.
- Full NEMA1 type enclosure for factory mounted controls.
- 3/4" (19), dual density insulation,

exposed edges coated to prevent air erosion. Meets the requirements of NFPA 90A and UL 181.

- Two multi-point averaging Diamond Flow Sensors. Aluminum construction. Supplied with balancing tees. Location must be specified based upon control sequence. Choice of location:
  - Cold and hot duct inlet.
  - Hot duct inlet and downstream total discharge.
  - Cold duct inlet and downstream total discharge.
- Choice of right or left-hand cold duct location. Hand of unit is determined by location of cold duct looking in direction of airflow. Right-hand unit illustrated.
- Unequal inlet sizes are available. Casing is governed by the larger inlet size.

**Controls:**

- Digital. (supplied by others).
  - Analog (by Nailor).
- See separate submittal.

**Options and Accessories:**

- 24 VAC control transformer.
- Toggle disconnect switch.
- Steri-liner.
- Fiber-free liner.
- Solid metal liner.
- 1" (25) liner.
- Bottom access door. (Model 0820-1)
- Controls enclosure for field mounted controls.
- Duct tight enclosure seal.
- Hanger brackets.
- Special Features:

<b>SCHEDULE TYPE</b>	
<b>PROJECT</b>	
<b>ENGINEER</b>	
<b>CONTRACTOR</b>	

Page 1 of 1.  
Dimensions are in inches (mm).

<b>DATE</b>	<b>B SERIES</b>	<b>SUPERSEDES</b>	<b>DRAWING NO.</b>
8 - 3 - 09	3200	2 - 13 - 06	D3230