



**FAN POWERED TERMINAL UNIT WITH ECM MOTOR
SERIES FLOW • CONSTANT VOLUME
MODELS: 35S, 35SW AND 35SE • UNIT SIZE 7
WITH 90° LINE VOLTAGE ENCLOSURE (FN2 OPTION)**

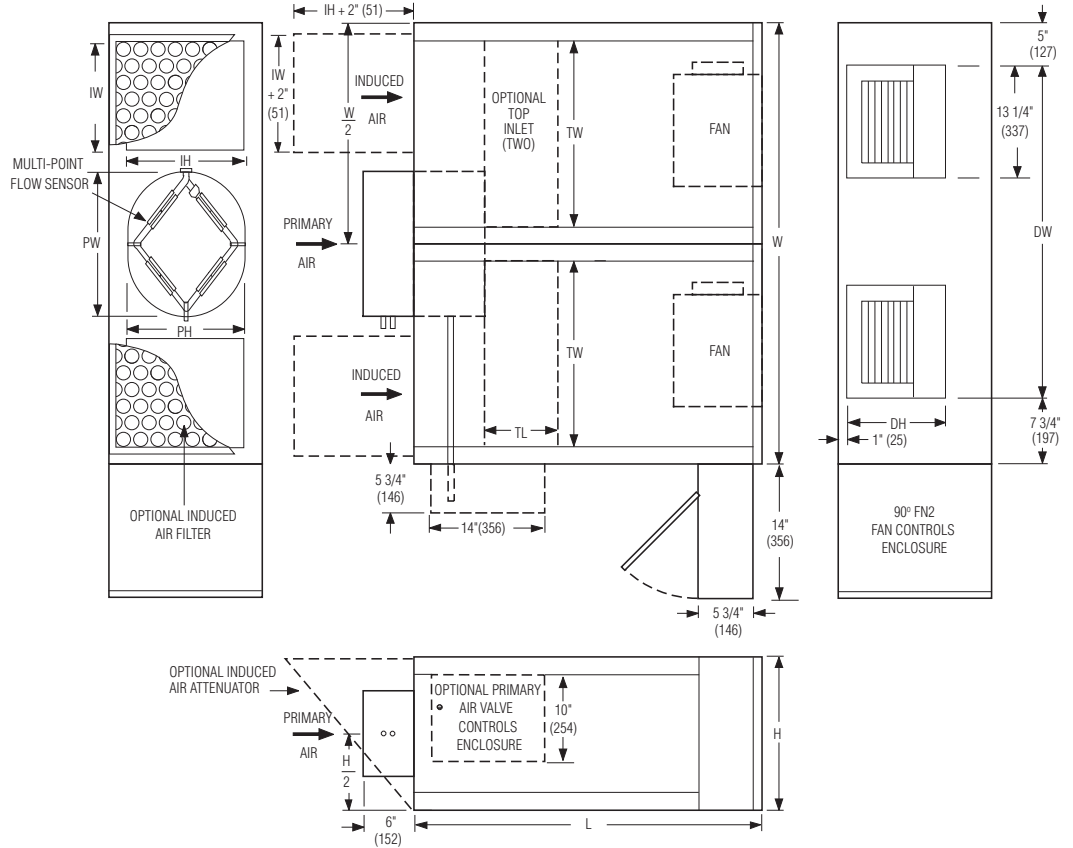
DESCRIPTION:

- 16 ga. (1.6) galvanized steel channel frame with 20 ga. (1.0) casing components.
- 16 ga. (1.6) galvanized steel inclined opposed blade damper. 45° rotation. CW to close.
- Multi-point averaging Diamond Flow sensor.
- Full size access panels on three sides.
- Ultra-high efficiency ECM fan motor. EPIC fan volume controller.
- 3/4" (19) dual density insulation, exposed edges coated to prevent air erosion. Meets requirements of NFPA 90A and UL 181.
- Single point electrical and/r pneumatic main air connection.
- Discharge opening for flanged duct connection.
- Full primary air valve low voltage enclosure for factory mounted DDC and analog electronic controls.
- FN2 line voltage enclosure incorporates a hinged access door opening upstream that helps ensure NEC clearance requirements and reduces footprint.
- Controls mounted as standard on RH side as shown. Terminals ordered with LH controls (optional) are inverted and discharge duct hanging elevation will therefore change.

OPTIONS:

- 'Q' option - Induced air inlet attenuators (2). Shipped loose.
- Filter frame and 1" (25) disposable filter.
- Toggle disconnect switch.
- Steri-liner.
- Fiber-free liner.
- Solid metal liner.
- Perforated metal liner.
- Fan unit fusing.
- Hanger brackets.
- Top entry induced air inlet.
- Left-hand controls location.
- Special features

Model 35S and Basic Unit



Dimensional Data. Imperial Units (inches)

Unit Size	Inlet		W	H	L	Induced Air Inlet		Outlet Discharge DW x DH	Filter Size	
	Size	PW x PH				Side (std.) IW x IH	Top (opt.) TL x TW		Side Inlet (std.)	Top Inlet (opt.)
7	14 rnd.	13 7/8	52	18	41	12 x 14	8 1/2 x 22	39 1/4 x 11 1/2	14 x 16	16 x 25
	16 rnd.	15 7/8								
	18 oval	20 3/16 x 13 7/8								

Dimensional Data. Metric Units (mm)

Unit Size	Inlet		W	H	L	Induced Air Inlet		Outlet Discharge DW x DH	Filter Size	
	Size	PW x PH				Side (std.) IW x IH	Top (opt.) TL x TW		Side Inlet (std.)	Top Inlet (opt.)
7	356 rnd.	352	1321	457	1041	305 x 356	216 x 559	997 x 292	356 x 406	406 x 635
	407 rnd.	403								
	457 oval	513 x 352								

Electrical Data

Unit Size	Motor H.P.	ECM FLA			
		120/1/60	208/1/60	240/1/60	277/1/60
7	*	19.2	12.2	11.6	10.0

* The ECM is a variable horsepower motor. Refer to Selectwoks Schedule.
FLA = Full load amperage



SCHEDULE TYPE:				
PROJECT:				
ENGINEER:		DATE	B SERIES	SUPERSEDES
CONTRACTOR:		4 - 20 - 10	3500	9 - 9 - 08
				DRAWING NO.
				35S-8A



**FAN POWERED TERMINAL UNIT WITH ECM MOTOR
HEAT ACCESSORIES
MODELS: 35SW AND 35SE • UNIT SIZE 7
WITH 90° LINE VOLTAGE ENCLOSURE (FN2 OPTION)**

Hot Water Coil Section Model 35SW

Standard Features:

- Coil section installed on unit discharge.
- Coil and header are installed in insulated casing for increased thermal efficiency.
- 1/2" (13) copper tubes.
- Aluminum ripple fins.
- Sweat connections: One and two row, 7/8" (22) O. D. male solder. Three row 1 3/8" (35) O.D. male solder.
- Top and bottom access panels for inspection and coil cleaning.
- Flanged outlet duct connection.

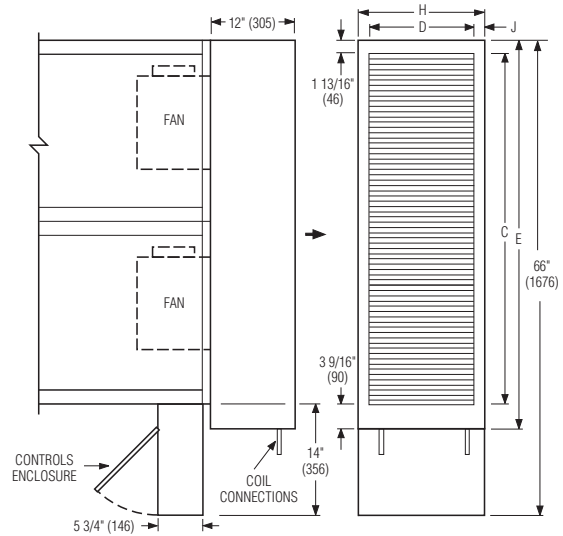
Coil Rows:

- 1-Row 2-Row 3-Row

Coil Hand Connections:

(Looking in direction of airflow).

- Right hand (illustrated). Standard.
 Left hand. Optional.



Unit Size	Imperial Units (inches)				Metric Units (mm)			
	Outlet Duct Size C x D	E	H	J	Outlet Duct Size C x D	E	H	J
7	50 x 14 7/8	55 3/8	18	1 9/16	1270 x 378	1407	457	40

Electric Coil Section Model 35SE

Standard Features:

- Unique hinged heater design permits easy access, removal and replacement of heater element without disturbing ductwork.
- Coil installed on unit discharge.
- Insulated coil element wrapper.
- Automatic reset high limit cut-outs (one per element).
- Single point electrical connection for entire terminal unit.
- Positive pressure airflow switch.
- Flanged outlet duct connection.
- Terminal unit with coil is ETL Listed as an assembly.
- Controls mounted as standard on RH side as shown. Terminals ordered with LH controls (optional) are inverted and discharge duct hanging elevation will therefore change.

Voltage:

Single phase, 60 Hz.

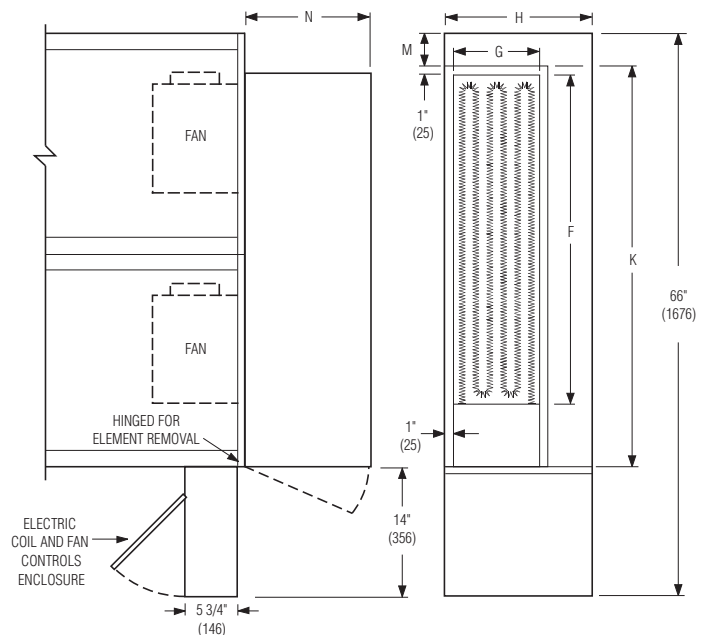
- 208V 240V 277V

Three phase, 60 Hz.

- 208V 480V (4 wire wye).

Options:

- Toggle disconnect switch (includes fan).
- Door interlock disconnect switch.
- Mercury contactors.
- Power circuit fusing.
- Class 'A' 80/20 Ni./Ch. wire.
- Dust tight construction.
- Manual reset secondary thermal cut out.



Unit Size	Imperial Units (inches)					Metric Units (mm)				
	Outlet Duct Size F x G	K	H	M	N	Outlet Duct Size F x G	K	H	M	N
7	40 1/4 x 11 3/4	48	18	4	15 1/4	1022 x 298	1219	457	102	387

SCHEDULE TYPE:

PROJECT:

ENGINEER:

CONTRACTOR:

Page 2 of 2.
Dimensions are in inches (mm).

DATE	B SERIES	SUPERSEDES	DRAWING NO.
4 - 20 - 10	3500	9 - 9 - 08	35S-8A