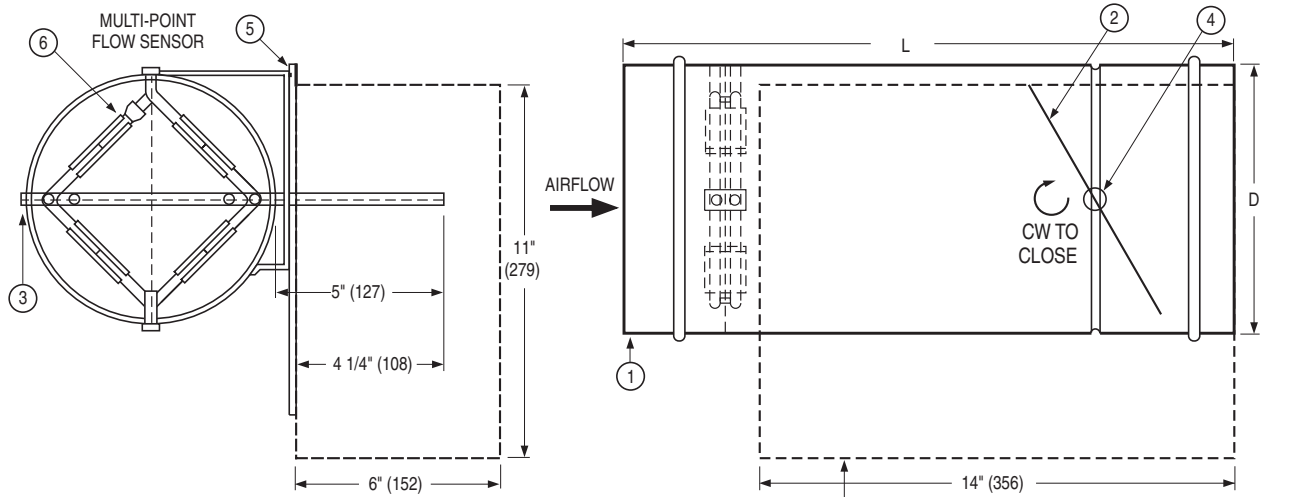




ROUND RETROFIT TERMINAL UNIT
 DIGITAL OR ANALOG ELECTRONIC CONTROL
 PRESSURE INDEPENDENT • VAV • EXTERNAL
MODELS: D36VRR AND A36VRR



Dimensional Data

Unit Size	Airflow Range cfm (l/s)	D	L
4	0 – 180 (0 – 85)	3 7/8 (98)	18 (457)
5	0 – 325 (0 – 153)	4 7/8 (124)	18 (457)
6	0 – 450 (0 – 212)	5 7/8 (149)	18 (457)
7	0 – 650 (0 – 307)	6 7/8 (175)	18 (457)
8	0 – 900 (0 – 425)	7 7/8 (200)	18 (457)
9	0 – 1150 (0 – 543)	8 7/8 (225)	20 (508)
10	0 – 1500 (0 – 661)	9 7/8 (251)	20 (508)
12	0 – 2050 (0 – 967)	11 7/8 (302)	20 (508)
14	0 – 2740 (0 – 1293)	13 7/8 (352)	22 (559)
16	0 – 3680 (0 – 1737)	15 7/8 (403)	22 (559)

Standard Construction:

- Casing: 22 ga. (0.86), corrosion-resistant steel with stiffening beads.
- Blade: Two layers of 20 ga. (1.0), corrosion-stainless steel laminated together with a cross-linked polyethylene peripheral gasket for tight shut-off. 90° rotation, CW to close. Damper leakage is less the 1% of the terminal rated airflow at 3" w.g. (750 pa.) and less than 2% at 6" w.g. (1500 pa.) as tested in accordance with ANSI / ASHRAE Standard 130.
- Bearings: Self-lubricating oilite bronze.
- Drive Shaft/Axles: 1/2" (13) diameter plated steel, double-bolted to blades. Indicator mark on the end of the shaft to show damper position.
- Full NEMA 1 type controls enclosure for factory mount controls.
- Multi-point averaging Diamond Flow Sensor: Aluminum construction. Supplied with brass balancing tees.
- Right-hand control location is standard (as shown) when looking in direction of airflow. Left-hand is optional.

Controls:

- Digital (by others).
 - Analog (by Nailor).
- See separate submittal.

Options and Accessories:

- FMI Removable Flow Sensor (See submittal 36FMI-1).
- 24 volt control transformer.
- Toggle disconnect switch.
- Controls enclosure for field mounted controls.
- Dust tight enclosure seal.
- Special features _____.

SCHEDULE TYPE

PROJECT

ENGINEER

CONTRACTOR

Dimensions are in inches (mm).

DATE

B SERIES

SUPERSEDES

DRAWING NO.

7 - 30 - 09

3600

3 - 6 - 09

36VRR-1