

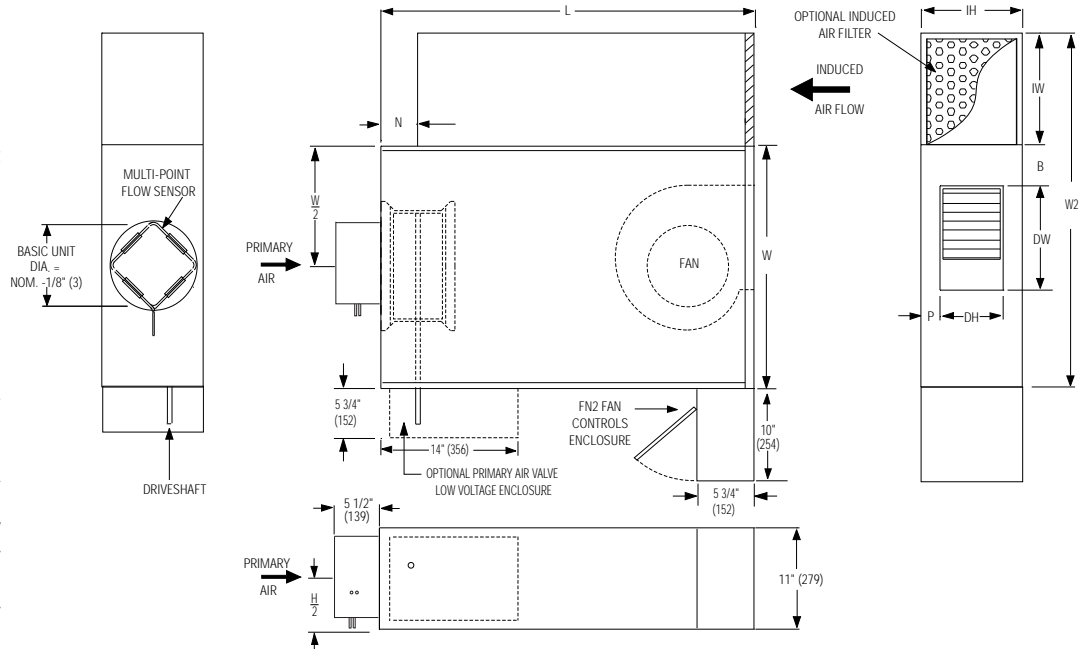


**LOW PROFILE FAN POWERED TERMINAL UNIT
WITH ECM MOTOR**
'STEALTH' • SERIES FLOW • CONSTANT VOLUME
MODELS: 37SST, 37SEST AND 37SWST • UNIT SIZES 1 & 3
WITH 90° LINE VOLTAGE ENCLOSURE (FN2 OPTION)

DESCRIPTION:

- Only 11" (279) high.
- 20 ga. (1.0) galvanized steel construction.
- 16 ga. (1.6) galvanized steel inclined blade damper. 45° rotation. CW to close.
- "Stealth" tuned inlet attenuator.
- Multi-point averaging Diamond Flow sensor.
- Access panels on top and bottom.
- Ultra-high efficiency ECM fan motor. EPIC fan volume controller.
- 1/2" (13) dual density insulation, exposed edges coated to prevent air erosion. Meets requirements of NFPA 90A and UL 181.
- Single point electrical and / or pneumatic main air connection.
- Discharge opening for flanged duct connection.
- Full primary air valve low voltage enclosure for factory mounted DDC and analog electronic controls.
- FN2 line voltage enclosure incorporate a hinged access door opening upstream that helps ensure NEC clearance requirement and reduces footprint.
- Controls mounted as standard on RH side as shown. Terminals ordered with LH controls (optional) are inverted.

Model 37SST/Basic Unit



OTHER OPTIONS:

- Filter frame and 1" (25) disposable filter.
- Toggle disconnect switch.
- Steri-liner.
- Fiber-free liner.
- Solid metal liner.
- Perforated metal liner.
- Fan unit fusing.
- Hanger brackets.
- Left-hand controls location.
- Special features

Dimensional Data. Imperial Units (inches)

Unit Size	Inlet Size	W	W2	L	B	N	P	Induced Air Inlet IW x IH	Outlet Discharge DW x DH	Filter Size
1	4, 5, 6, 8	19	28	36	13/16	7	1 1/4	9 x 11	7 1/8 x 4 3/4	11 x 9
3	6, 8, 10	26 1/2	38 1/2	40 1/4	4 3/8	6 1/4	1 1/2	12 x 11	12 1/4 x 8	12 x 11

Dimensional Data. Metric Units (mm)

Unit Size	Inlet Size	W	W2	L	B	N	P	Induced Air Inlet IW x IH	Outlet Discharge DW x DH	Filter Size
1	102, 127, 152, 203	483	711	914	21	178	32	229 x 279	181 x 121	279 x 229
3	152, 203, 254	673	978	1022	111	159	38	305 x 279	311 x 263	305 x 279

Electrical Data

Unit Size	Motor H.P.	ECM FLA			
		120/1/60	208/1/60	240/1/60	277/1/60
1	*	1.7	1.1	1.1	1.0
3	*	5.1	3.6	3.4	2.9

* The ECM is a variable horsepower motor. Refer to Selectwoks Schedule. FLA = Full load amperage



SCHEDULE TYPE				
PROJECT				
ENGINEER		DATE	B SERIES	SUPERSEDES
CONTRACTOR		4 - 20 - 10	3700	12 - 1 - 08
				DRAWING NO.
				37SST-7A



LOW PROFILE FAN POWERED TERMINAL UNIT WITH ECM MOTOR • HEAT ACCESSORIES 'STEALTH' • SERIES FLOW • CONSTANT VOLUME MODELS: 37SST, 37SEST AND 37SWST • UNIT SIZES 1 & 3 WITH 90° LINE VOLTAGE ENCLOSURE (FN2 OPTION)

Hot Water Coil Section Model 37SWST

Standard Features:

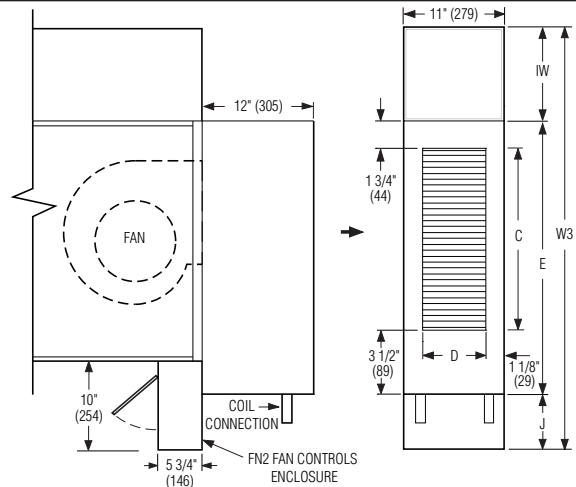
- Coil section installed on unit discharge.
- Coil (and header on multi-circuit units) is installed in insulated casing for increased thermal efficiency.
- 1/2" (13) copper tubes.
- Aluminum ripple fins.
- Sweat connections: One row 1/2" (13) O. D. male solder. Two and three row 7/8" (22) O.D. male solder.
- Top and bottom access panels for inspection and coil cleaning.
- Flanged outlet duct connection.

Coil Rows:

- 1-Row 2-Row 3-Row

Coil Hand Connections:

- (Looking in direction of airflow).
- Right hand (illustrated). Standard.
- Left hand (terminals are inverted). Optional.
- Connections must be selected same hand as controls enclosure location.



Unit Size	Imperial Units (inches)				Metric Units (mm)			
	Outlet Duct Size C x D	W3	E	J	Outlet Duct Size C x D	W3	E	J
1	14 3/4 x 8 3/4	38	20	9	375 x 222	965	508	229
3	23 7/8 x 8 3/4	48 1/2	29 1/8	7 3/8	606 x 222	1232	740	187

Electric Coil Section Model 37SEST

Standard Features:

- Unique hinged heater design permits easy access, removal and replacement of heater element without disturbing ductwork.
- Coil installed on unit discharge.
- Insulated coil element wrapper.
- Automatic reset high limit cut-outs (one per element).
- Single point electrical connection for entire terminal unit.
- Positive pressure airflow switch.
- Flanged outlet duct connection.
- Terminal unit with coil is ETL Listed as an assembly.
- Controls mounted as standard on RH side as shown. Terminals ordered with LH controls (optional) are inverted.

Voltage:

Single phase, 60 Hz.

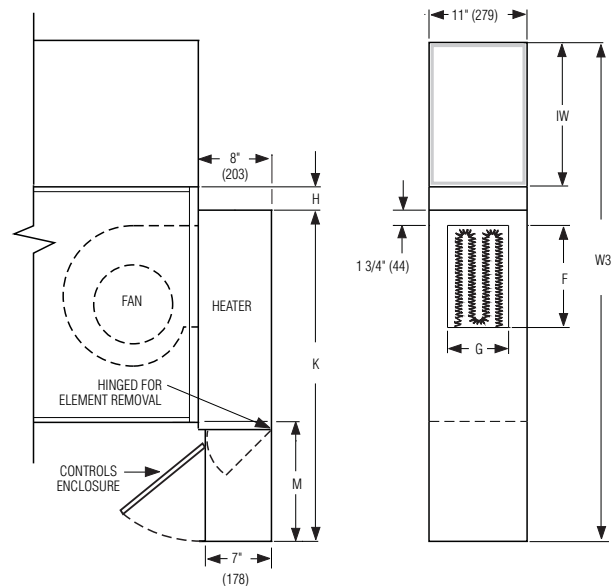
- 208V 240V 277V

Three phase, 60 Hz.

- 208V 480V (4 wire wye). _____ .

Options:

- Toggle disconnect switch (includes fan).
- Door interlock disconnect switch.
- Mercury contactors.
- Power circuit fusing.
- Class 'A' 80/20 Ni./Ch. wire.
- Dust tight construction.
- Manual reset secondary thermal cut out.



Unit Size	Imperial Units (inches)					Metric Units (mm)				
	Outlet Duct Size F x G	W3	H	M	K	Outlet Duct Size F x G	W3	H	M	K
1	10 1/4 x 8	44 1/8	1/2	16 1/8	34 5/8	260 x 203	1121	12	410	879
3	12 1/4 x 8	55 1/2	3 1/2	17	40	311 x 203	1410	89	432	1016

SCHEDULE TYPE

PROJECT

ENGINEER

CONTRACTOR

Page 2 of 2.
Dimensions are in inches (mm).

DATE

B SERIES

SUPERSEDES

DRAWING NO.

4 - 20 - 10

3700

12 - 1 - 08

37SST-7A