

# SOUND SOLUTIONS...

## Nailor's "STEALTH" FAN POWERED TERMINAL UNIT

### NAILOR IS ARI CERTIFIED AND ETL LISTED

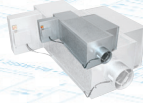


**NAILOR IS 100% INDEPENDENTLY CERTIFIED**  
 • Every size of every model of Nailor VAV Terminal Units has been tested at every catalogued operating point and certified by Energistics, a division of Cerami & Associates, Inc.



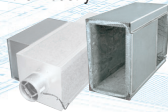
### NAILOR UNITS ARE SMALL

- Smallest footprint in the industry
- Easy to handle
- Easy to hang



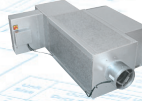
### NAILOR UNITS ARE QUIET

- Basic unit is quieter than most competitors' "Q" models
- Stealth units are the quietest in the industry



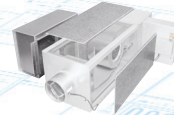
### SPACE FRAME CONSTRUCTION

- 16 ga. rails provide structural strength and secure mounting
- 20 ga. insulated access panels



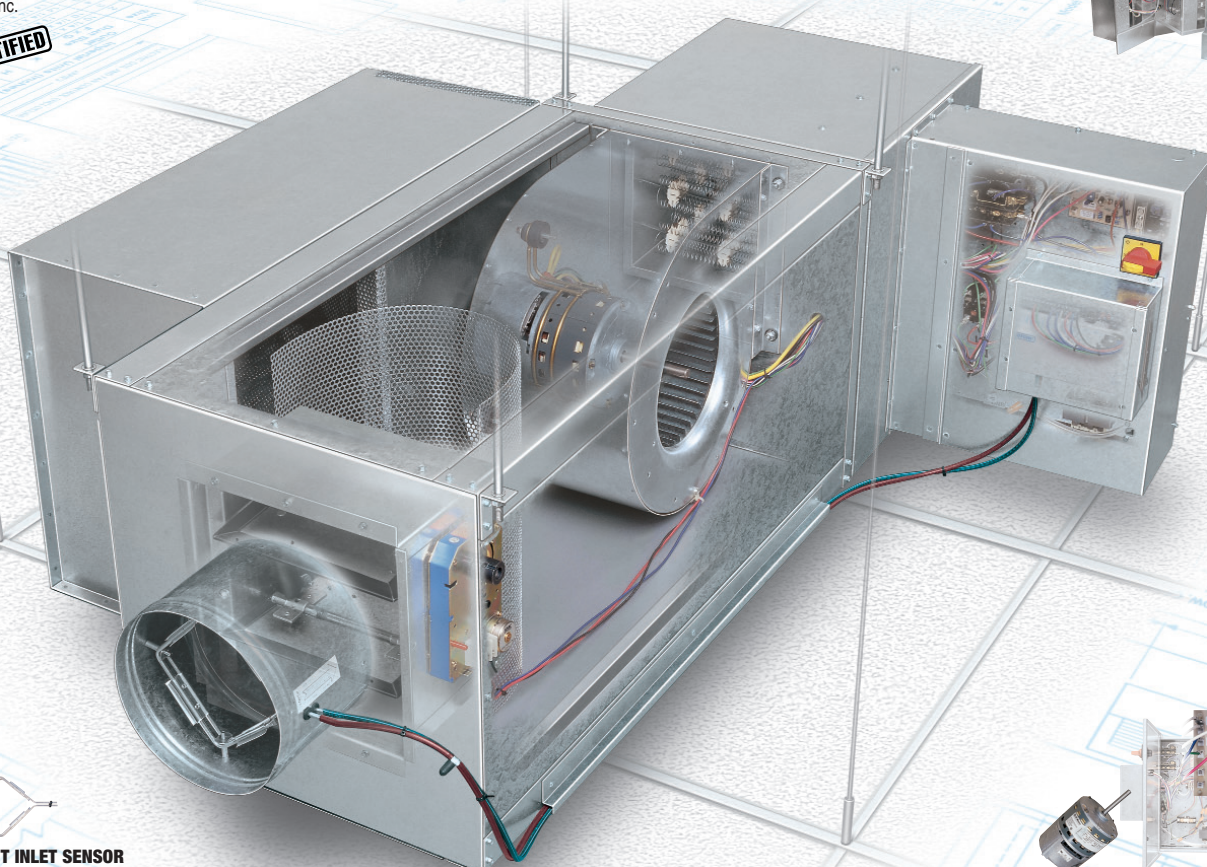
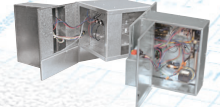
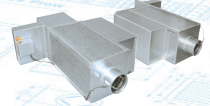
### SUPERIOR ACCESS

- Space Frame construction provides universal access from all four sides of the unit, not just bottom or side



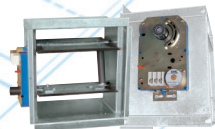
### JOB SITE FLEXIBILITY

- Unit may be flipped over for right or left hand orientation
- Optional discharge enclosure allows heater element removal without disturbing ductwork



### MULTI-POINT INLET SENSOR

- +/-5% accuracy even with hard 90° elbow at the inlet
- Durable aluminum construction
- Manufactured by Nailor



### DAMPER

- OBD with 45° closure
- Good linearity with constant rate of change for BTUH to space



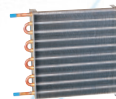
### NAILOR HAS ELIMINATED FAN SHIFT

- Unique radiused perforated Air diffusion lens eliminates fan shift



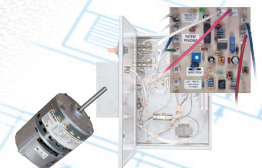
### NAILOR ELECTRIC HEAT OPTION

- High efficiency arrowhead insulators eliminate glow and extend element life
- Manufactured in-house by Nailor



### NAILOR HOT WATER HEAT OPTION

- Access panels that expose both faces of coil for cleaning and inspection
- Encased headers and return bends - No heat loss in heating condition, no heat gain in cooling condition



### NAILOR, THE FIRST TO OFFER ECM MOTOR TECHNOLOGY

- Unique factory pre-set air volume capability
- 67% average energy savings compared to PSC motors
- Pressure independent fan operation
- LED for visual indication of air volume
- Field adjustable fan air volume controller
- Remote fan air volume adjustment capability with analog voltage input from BMS
- Large turn down ratios mean more flexibility for tenant changes

**AT NAILOR, TOMORROW'S IDEAS ARE TODAY'S REALITIES**

[www.nailor.com](http://www.nailor.com) / Call your local representative for a demonstration

**HOUSTON, TEXAS**  
 Tel: 281-590-1172  
 Fax: 281-590-3086

**TORONTO, CANADA**  
 Tel: 416-744-3300  
 Fax: 416-744-3360

**THETFORD, NORFOLK, ENGLAND**  
 Tel: (0)1842 753624  
 Fax: (0)1842 762032

