



WIDE FRAME CURTAIN FIRE DAMPER
3 HR. LABEL • VERTICAL MOUNT
FOR USE IN STATIC SYSTEMS
MODEL 0540V TYPE A



QUALIFICATIONS:

- UL 555 Classified Fire Damper. 3 hr. label. (File # 9492).
- CAN/ULC-S112 Fire Damper Assemblies.
- Meets all the requirements of UL and NFPA 90A for fire dampers in static HVAC systems.
- Meets the requirements for BOCA, SBCCI, UBC, IBC and associated local building codes.
- Meets all the requirements of NBC.
- California State Fire Marshal Listing No. 03225-0935:100.
- City of New York Board of Standards and Appeals. Cal. No. 460-88-SA.

The 0540 curtain fire damper is UL approved for use where local building codes require the protection of HVAC ductwork penetrations in walls or partitions that have a fire resistance rating of up to 4 hours. The 0540 is classified for use only in static "fans off" systems where the HVAC system is automatically shut down in the event of a fire alarm. The wide frame design reduces the number of blades required in the curtain stack, which increases the free area and therefore reduces the pressure drop across the damper when compared to standard Type A curtain fire damper designs.

STANDARD SPECIFICATION:

- FRAME:** 6" (152) wide, 22 ga. (0.85) roll-formed G60 galvanized steel.
- BLADES:** Curtain type interlocking blades, 22 ga. (0.85) roll-formed G60 galvanized steel.
- FUSIBLE LINK:** 165°F (74°C) standard. UL Listed.
 212°F (100°C) available.
- BLADE CLOSURE:** Vertical mount: gravity.
- MINIMUM SIZE:** 4" x 4" (102 x 102).
- MAXIMUM SIZE:** Type A vertical mount: 60" x 48" (1524 x 1219) or 24" x 60" (610 x 1524).
 Multiple Section Assemblies are not permitted.

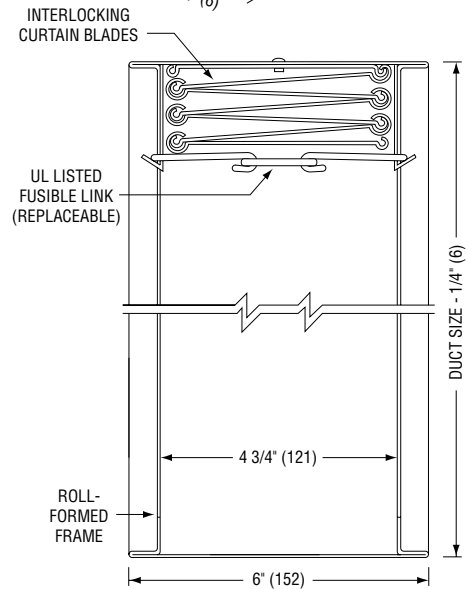
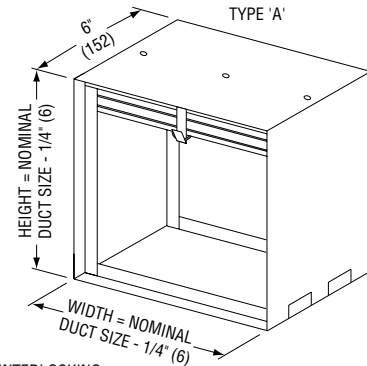
OPTIONS:

- Non-standard temperature fusible link. Specify _____.
- Factory Sleeve. Available in 10 (3.5) through 22 ga. (0.85) galvanized steel and in lengths required for application. Specify : _____ length. _____ ga.

NOTES:

1. Building codes and UL Classification require damper installation in accordance with manufacturer's instructions. Refer to appropriate model installation instructions.
2. See sizing chart for blade pack depth. Refer to drawings SC5 and SC6.

Manufactured by members of S.M.W.I.A.



MODEL 0540V – VERTICAL MOUNT

SCHEDULE TYPE:				
PROJECT:				
Dimensions are in inches (mm).				
ENGINEER:	DATE	B SERIES	SUPERSEDES	DRAWING NO.
CONTRACTOR:	2 - 18 - 05	FD	8 - 2 - 02	0540