



**COMBINATION FIRE/SMOKE DAMPER FOR GRILLES**  
 1 1/2 HR. LABEL • LEAKAGE CLASS I OR II  
 VERTICAL OR HORIZONTAL MOUNT  
**MODEL: 1271G**



**QUALIFICATIONS:**

- **UL 555 & CAN/ULC-S112 CLASSIFIED DYNAMIC FIRE DAMPER** 1 1/2 hr. Label (File #'s R9492 & R19569).
- **UL 555S CLASSIFIED SMOKE DAMPER (File # R9492)** Leakage Class I or II at 250°F or 350°F elevated temperature.
- **Meets NFPA Standards 80, 90A, 92A, 92B, 101 and 105.**
- **Maximum velocity 2000 fpm @ 4" w.g.**

Model 1271G combination fire/smoke damper is specifically designed for supply or return ducts that terminate at a grille. The special factory sleeve with unique 3/4" (19) grille mounting flanges simplifies installation, saves on field labor and eliminates the requirements for unsightly front retaining angles which commonly protrude from behind the grill. Steel grille with correctly located countersunk screw holes is available from Nailor and installs over and completely hides the mounting flanges. The damper is offset in the sleeve to accommodate a single or double deflection supply air grille, single deflection supply air register or a return air grille or register.

The 1271G is ideal for applications where building codes require both a fire damper for the protection of ductwork penetrations in walls or floors that have a fire resistance rating of up to 2 hours and also require a leakage rated damper for operational smoke control in static or dynamic smoke management systems.

The 1271G has been especially designed and tested to offer a rugged cost effective damper well suited to the majority of commercial applications.

**STANDARD SPECIFICATION:**

- Frame:** 5" x 7/8" x 16 ga. (127 x 22 x 1.6) galvanized steel hat channel.
- Blades:** 6" (152) wide on 5 1/2" (140) centers. 16 ga. (1.6) galvanized steel vee groove or double-skin design.
- Sleeve:** 16" x 20 ga.. (406 x 1.0) galvanized steel with 3/4" (19) wide grille mounting flanges.
- Linkage:** Concealed in frame. 12 ga. (2.7) plated steel.
- Bearings:** 1/2" (13) dia. self-lubricating oilite bronze.
- Axles:** 1/2" (13) dia. plated steel bolted to blades.
- Jackshaft:** 1/2" (13) dia. cadmium plated steel.
- Jamb Seals:** Stainless steel.
- Blade Seals:** Stainless steel on vee groove blade.

**Heat Responsive Device (Controlled Closure):**

ERL (Electric Resettable Link) is standard on dampers with electric actuators: 250°F (121°C) standard. 165°F (74°C), 212°F (100°C) and 350°F (176°C) available.

PRL (Pneumatic Replaceable Link) is standard on dampers with pneumatic actuators: 212°F (100°C) standard. 165°F (74°C) and 280°F (138°C) available.

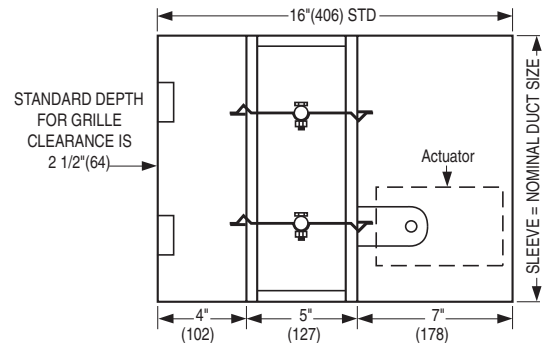
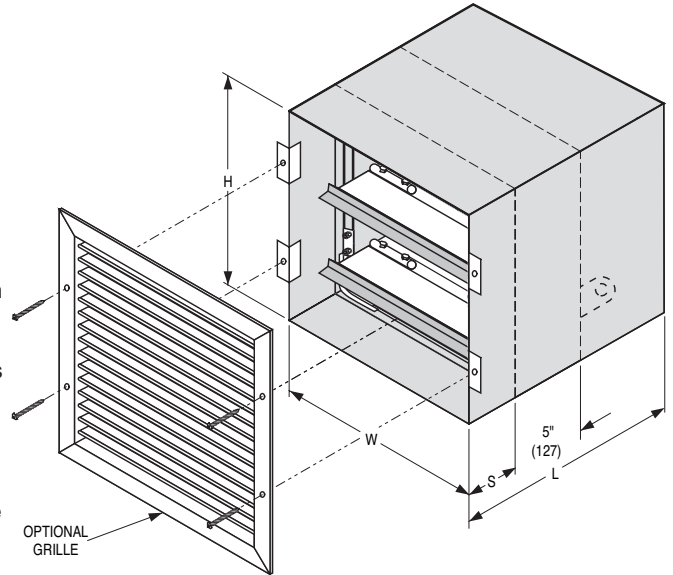
**Minimum Size:** 8" x 8" (203 x 203).

**Maximum Size:** 24" x 24" (610 x 610).

**IMPORTANT NOTE:** Minimum 6 1/2" (165) wall thickness is required for this installation. Contact factory for non-standard applications.

**BASE MODEL SELECTION:**

- 1271G** Standard factory sleeve (caulked to UL requirements) 16" see above.
- 1271G** Non-standard sleeve: Specify \_\_\_\_\_ length \_\_\_\_\_ ga. Non-standard damper position: S = \_\_\_\_\_.



**LEAKAGE CLASS / ELEVATED TEMPERATURE:**

- I  II @ 250°F (Standard)
- I  II @ 350°F (Optional)

**ACTUATOR SELECTION:**

- Electric**  **Pneumatic** Specify model \_\_\_\_\_.

**ACTUATOR LOCATION :**

- External** (std.)  **Internal** (in the airstream)

**ACTUATOR FAIL POSITION:** Closed.

**OPTIONS:**

- MLS-300** Position indicator switch pack
- MLS-400** Electric Fire Sensor (Re-openable control system). Includes dual heat sensors (165°F and 250°F or 350°F) and position indicator switch pack.
- QS1** Quick-set retaining angle (one side)
- TDF1** Flange (one end)

**SCHEDULE TYPE:**

**PROJECT:**

**ENGINEER:**

**CONTRACTOR:**

For installation instructions, see IOM-FSDGTINST  
 Dimensions are in inches (mm).

DATE	B SERIES	SUPERSEDES	DRAWING NO.
8 - 21 - 08	1200	3 - 7 - 06	1271G