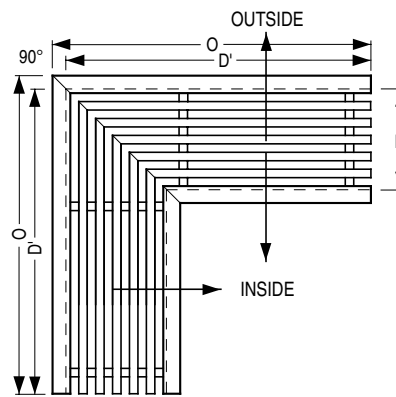


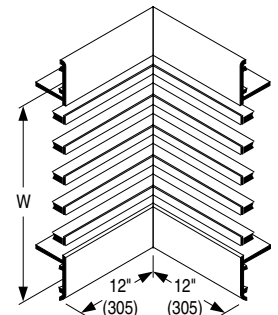
### MITERED CORNER SECTIONS:

- 49-240MC** 1/2" (13) spacing, 1/4" (6) bars, 0° defl.
- 49-241MC** 1/2" (13) spacing, 1/4" (6) bars, 15° defl.
- 49-243MC** 1/2" (13) spacing, 1/4" (6) bars, 30° defl.
- 49-280MC** 1/2" (13) spacing, 1/8" (3) bars, 0° defl.
- 49-281MC** 1/2" (13) spacing, 1/8" (3) bars, 15° defl.
- 49-480MC** 1/4" (6) spacing, 1/8" (3) bars, 0° defl.
- 49-481MC** 1/4" (6) spacing, 1/8" (3) bars, 15° defl.

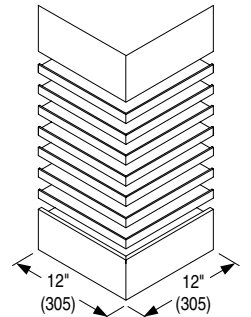
Factory welded with precision to match and align with the associated straight leg.  
Standard mitered corner section for floor, ceiling or wall is 90 degrees.  
Other angles are available.



**Type WC Sidewall, inside**



**Type WD Sidewall, outside**



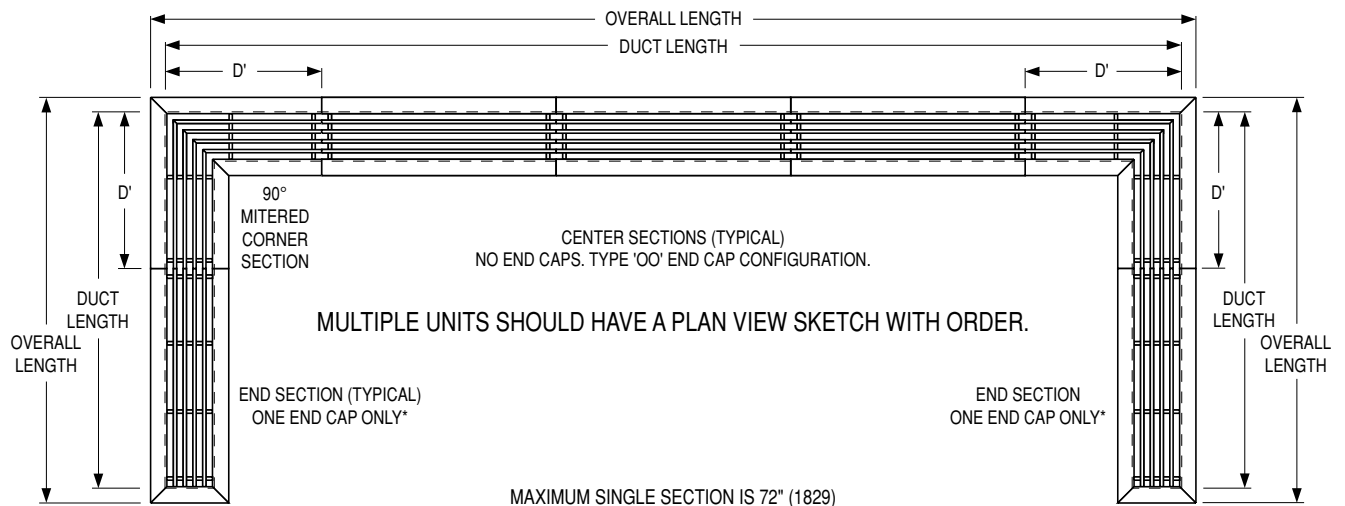
### Floor, Ceiling or Sill

- Type FO** • 0° deflection
- Type FA** • Deflection inside
- Type FB** • Deflection outside

### 90° Mitered Corner Dimension 'O'

Duct Width D	Duct Length D'	Frame Type							
		A, D	B	C	E	F	G	H	
1 1/2" - 4"	12"	12 3/4" (324)	12 1/2" (318)	13 1/16" (332)	12 1/4" (311)	12 13/16" (325)	12" (305)	12 9/16" (320)	
4 1/2" - 12"	18"	18 3/4" (476)	18 1/2" (470)	19 1/16" (484)	18 1/4" (606)	18 13/16" (610)	18" (457)	18 9/16" (472)	

### CONTINUOUS RUN DIMENSIONS



\*End sections with single end caps and deflecting cores must be specified and ordered with the desired core deflection direction.

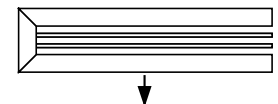
### END CAP CONFIGURATIONS (mitered end cap one end and open opposite end):

**Type 'MO'** =  
0° deflection

**Type 'MU'** =  
15° or 30°



**Type 'MD'** =  
15° or 30°



Dimensions are in inches (mm).

**SCHEDULE TYPE:**

**PROJECT:**

**ENGINEER:**

**CONTRACTOR:**

**DATE**

**B SERIES**

**SUPERSEDES**

**DRAWING NO.**

8 - 30 - 05

4900

10 - 1 - 04

4900-3B