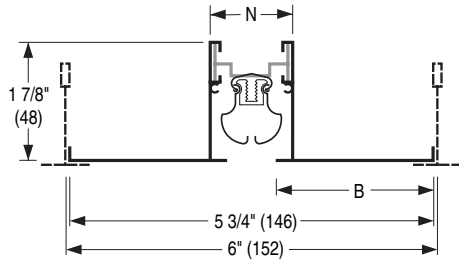


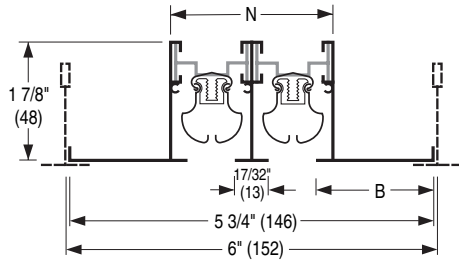


**LINEAR SLOT DIFFUSERS**  
 EXTRUDED ALUMINUM  
 FOR TECHZONE™ TYPE CEILINGS  
 15/16" (24) & 9/16" (14) T-BAR LAY-IN  
**MODELS: 5075TZ SUPPLY AND 5075TZR RETURN**  
**FRAME TYPE L**

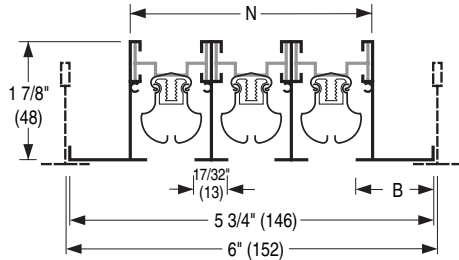
**1 Slot:**



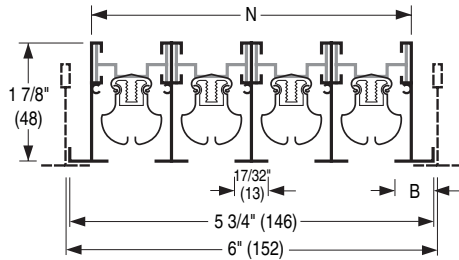
**2 Slot:**



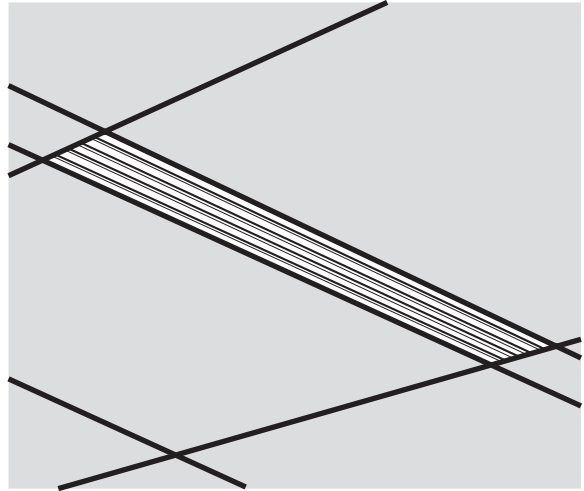
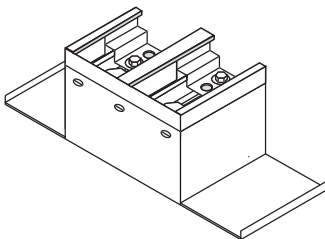
**3 Slot:**



**4 Slot:**



**C - Flat End Cap**



No. of Slots	Border (DIM. B)	Neck (DIM. N)
1	2 1/2 (64)	1 3/8 (35)
2	1 7/8 (48)	2 5/8 (67)
3	1 1/4 (32)	3 7/8 (98)
4	5/8 (16)	5 1/8 (130)

**NOTES:**

- Compatible with Armstrong® Techzone™ and USG Logix™ ceiling systems.
- Material: Extruded aluminum frame. Corrosion-resistant steel pattern controllers.
- 3/4" (19) nominal slot width. Available in 1, 2, 3, and 4 slots.
- Available in 24" (610), 30" (762), 36" (914), 48" (1219), 60" (1524) and 72" (1829) lengths. Ends are finished with Type CC flat end caps. Overall length is nominal ceiling module length minus 1/4" (6).
- The volume and direction of the discharge air can be adjusted by moving the pattern controllers.
- The maximum length of the pattern controller is 36" (914). Diffusers longer than 36" (914) are provided with multiple pattern controller sections.
- Standard finish is AW Appliance White. Black pattern controllers.
- 5075TZR is a matching return diffuser and supplied without pattern controllers.
- For performance data see Nailor catalog, Model 5075.

**OPTIONS:**

**FACTORY SUPPLIED PLENUM**

- 5375TZ  5375TZI Insulated

See separate submittal for full specification and dimensional data.

<b>SCHEDULE TYPE:</b>	Dimensions are in inches (mm).			
<b>PROJECT:</b>				
<b>ENGINEER:</b>	<b>DATE</b>	<b>B SERIES</b>	<b>SUPERSEDES</b>	<b>DRAWING NO.</b>
<b>CONTRACTOR:</b>	4 - 9 - 10	5000	8 - 12 - 09	5075TZ-1