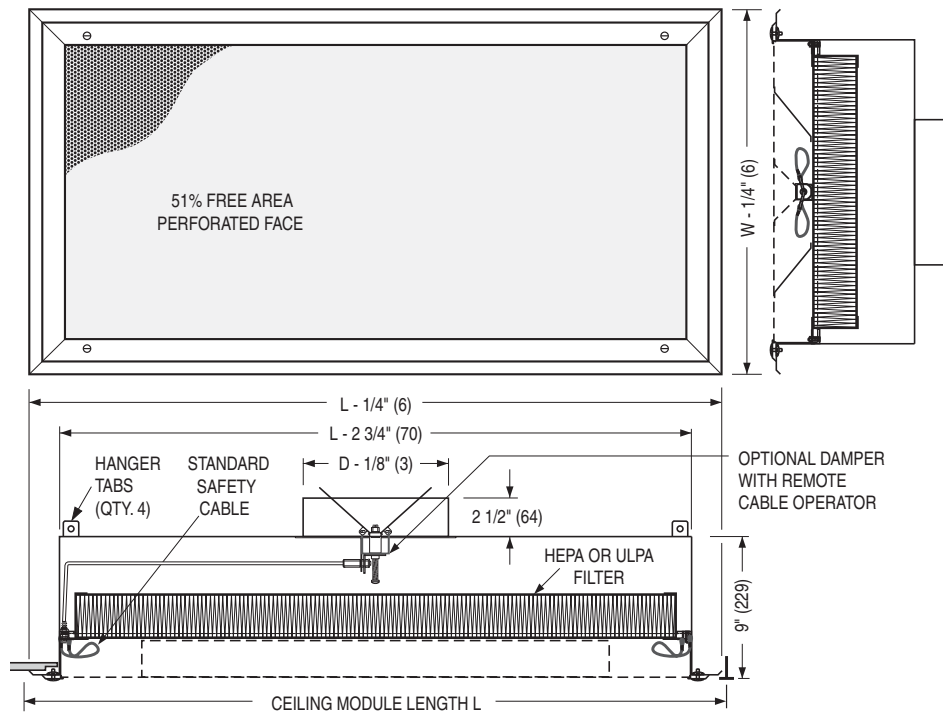
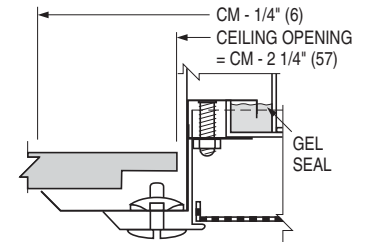




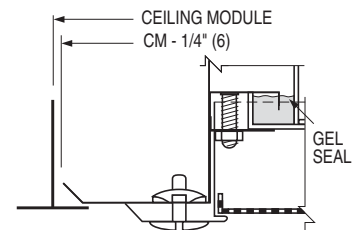
**RADIAL PATTERN DIFFUSER – FLUSH FACE**  
**STAINLESS STEEL • REMOVABLE PERFORATED FACE**  
**HEPA OR ULPA FILTER • 180 DEGREE PATTERN**  
**MODEL: 92FRPF-2SS**



**TYPE S Surface Mount Detail**

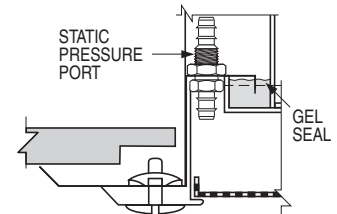


**TYPE L\* Lay-in T-Bar Detail**



\* Compatible with T-Bars up to 1 1/4" (32) wide.

**Optional Static Pressure Port**



**Ceiling Module Sizes L x W & Nominal Round Duct Sizes D**

L x W	Imperial Modules (inches)		24 x 24	36 x 24	48 x 24	60 x 24
	Metric Modules (mm)		600 x 600	900 x 600	1200 x 600	1500 x 600
Duct Size D	(inches)		6, 7, 8	6, 7, 8, 10	7, 8, 10, 12	10, 12
	(mm)		152, 178, 203	152, 178, 203, 254	178, 203, 254, 305	254, 305

**DESCRIPTION:**

The Model 92FRPF-2SS Flush Face Radial Pattern Diffuser has been designed to provide low aspiration at high ventilation rates, especially for clean room applications such as research laboratories, animal labs, food processing, hospital rooms and computer rooms.

The diffuser includes specially designed baffles and an extended plenum with a unique frame that is designed to accommodate a Gel Seal HEPA or ULPA filter. The filters can be easily removed and replaced from the face of the unit. This design provides large volumes of air at low initial velocities.

The plenum is factory DOP scan tested for leaks in accordance with Standard IEST-RP-CCO34.3.

The 92FRPF-2SS model introduces air in a semi-cylindrical 180 degree radial flow pattern, flushing a room with large volumes of clean conditioned air, minimizing entrainment and hence mixing with contaminated air, whilst still allowing low room air velocities.

**CONSTRUCTION:**

- 304 stainless steel frame and perforated face with 3/16" (5) dia. holes on 60 degree 1/4" (6) staggered centers (51% free area). The face plate is removable for cleaning and is secured by 1/4 turn fasteners.
- 304 stainless steel fully welded plenum and baffles.
- Standard safety cables prevent accidental dropping of removable face.
- HEPA Filter: Clear anodized extruded aluminum filter frame with port for damper adjustment.
- Standard finish is #4 Satin Polished finish.

**OPTIONS:**

Finish:

- AW Appliance White.
- 316 316 Stainless Steel construction.
- UL ULPA Filter (99.9995% on 0.12 µm).
- FBO Filter by others.
- BDS Butterfly damper, Stainless Steel (face operated).
- BDSR Butterfly damper with remote cable operator, Stainless Steel.
- SPP Static pressure test/DOP port.
- DDM DOP Dispersal manifold with injection port.
- SP Special \_\_\_\_\_ .

**SCHEDULE TYPE:**

**PROJECT:**

**ENGINEER:**

**CONTRACTOR:**

Dimensions are in inches (mm).

DATE	B SERIES	SUPERSEDES	DRAWING NO.
12 - 12 - 11	9200	3 - 30 - 11	92FRPF-2SS