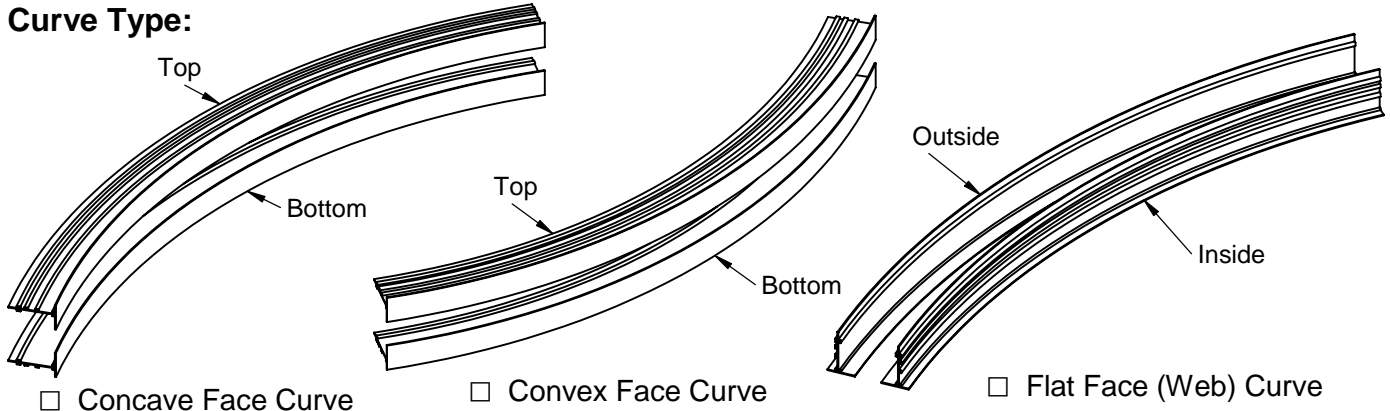




**FLOWLINE™ LINEAR SLOT DIFFUSERS**  
 ARCHITECTURAL • ALUMINUM  
 CUSTOM LINEAR CURVING – BASIC FLOWLINE DATA  
**MODELS: FLH AND FLV**

**Curve Type:**



- Concave Face Curve       Convex Face Curve       Flat Face (Web) Curve

**Flowline Slot Width & Type:**

- FL10, 1" Slot Width       1-Slot  
 FL15, 1 1/2" Slot Width       2-Slot  
 FL20, 2" Slot Width  
 FL25, 2 1/2" Slot Width  
 FL30, 3" Slot Width

**Flowline Application:**

- Flat Curve, Ceiling  
 Concave Arched Ceiling  
 Convex Arched Ceiling  
 Flat Curve, Wall  
 Concave Wall  
 Convex Wall

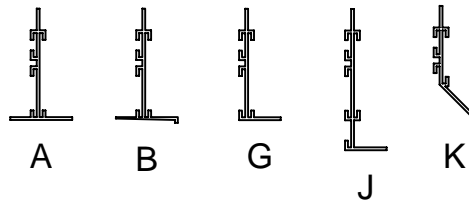
**Border Style**

**Inside or Bottom:**

- A  
 B  
 G  
 J  
 K

**Outside or Top:**

- A  
 B  
 G  
 J  
 K



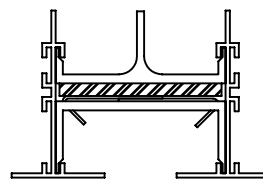
**End Configuration:**

- Open End  
 Flat End Cap  
 Flanged, available on AA border only.  
 (Miter end not available with curved product.)

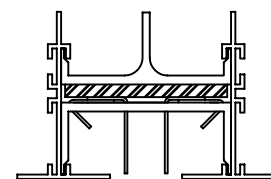
**Pattern Controller Type:**

- FLH Horizontal High Throw  
 FLV Vertical Jet Throw  
 (May not be adjustable, and not available with K border)

Please note that as radius decreases, pattern controllers are less adjustable.



FLH Horizontal High Throw



FLV Vertical Jet Throw

**SCHEDULE TYPE:**

**PROJECT:**

**ENGINEER:**

**CONTRACTOR:**

Page 1 of 3  
 Dimensions are in inches (mm).

DATE	B SERIES	SUPERSEDES	DRAWING NO.
12-29-05	FL	NEW	FLCC



**FLOWLINE™ LINEAR SLOT DIFFUSERS**  
**ARCHITECTURAL • ALUMINUM**  
**CUSTOM LINEAR CURVING – CURVING DATA**  
**MODELS: FLH AND FLV**

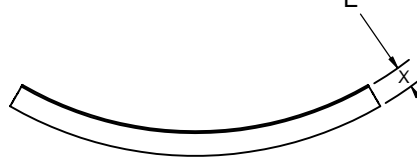
**Location of radius measured:**

- A. Inside radius of inner border
- B. Centerline of unit
- C. Outside edge of outer border
- D. Convex wall, ceiling surface
- E. Concave wall, ceiling surface

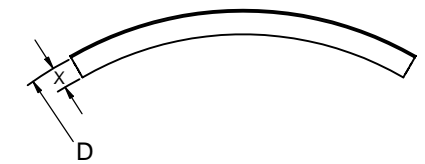
Please note that dimension "X" varies with slot size and border type.

**Radius:** \_\_\_\_\_ inches

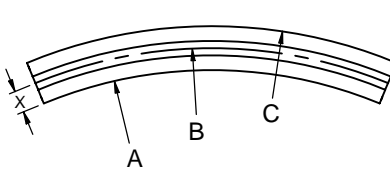
Concave Face Curve



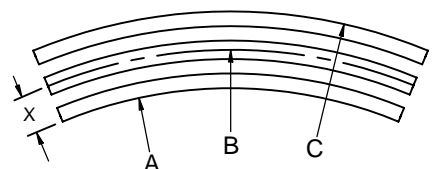
Convex Face Curve



Flat Face Curve, 1-slot



Flat Face Curve, 2-slot



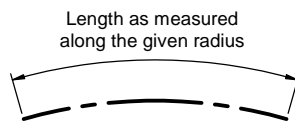
**Length of the arc, or the angle:**

Please specify either of the following:

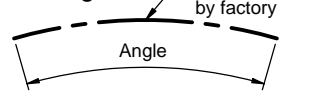
- A. Length: \_\_\_\_\_ inches
- B. Angle: \_\_\_\_\_ degrees,
- C. Chord: \_\_\_\_\_ inches

Length or Angle refers to the slot length. It does not include end caps or borders.

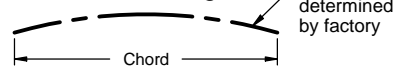
A. Arc Length



B. Angle



C. Chord Length

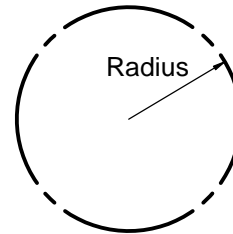


**Full circles:**

Please specify the radius:

- Constant radius: \_\_\_\_\_ inches

Please note minimum radius is 36 inches for borders A, G, and J, and 120 inches for borders B and K.



**Two-radius Ellipse:**

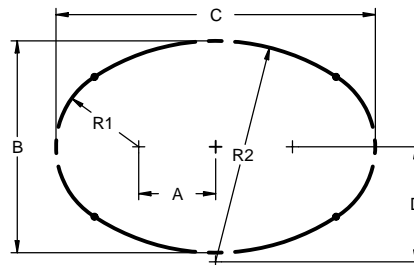
Please specify both radii:

R1: \_\_\_\_\_ inches, R2: \_\_\_\_\_ inches

Please specify dimensions:

A: \_\_\_\_\_ inches, B: \_\_\_\_\_ inches,

C: \_\_\_\_\_ inches, D: \_\_\_\_\_ inches



**Serpentine:**

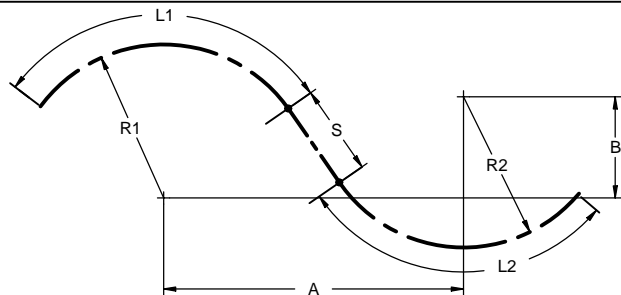
Please specify the following:

R1: \_\_\_\_\_ inches, R2: \_\_\_\_\_ inches

A: \_\_\_\_\_ inches, B: \_\_\_\_\_ inches

L1: \_\_\_\_\_ inches, L2: \_\_\_\_\_ inches

Optional straight, S: \_\_\_\_\_ inches



**SCHEDULE TYPE:**

**PROJECT:**

**ENGINEER:**

**CONTRACTOR:**

Page 2 of 3  
 Dimensions are in inches (mm).

DATE	B SERIES	SUPERSEDES	DRAWING NO.
12-29-05	FL	NEW	FLCC



**FLOWLINE™ LINEAR SLOT DIFFUSERS**  
 ARCHITECTURAL • ALUMINUM  
 CUSTOM LINEAR CURVING – CURVED PLENUMS  
**MODELS: FLH AND FLV**

**Type of plenum required:**

- A. Convex Face Curve
- B. Concave Face Curve
- C. Flat Face Curve,  
Inlet on inside curve
- D. Flat Face Curve,  
Inlet on outside curve
- E. No plenum is required

**Plenum attachment method:**

- A. Hemmed leg for concealed mounting bracket
- B. Straight leg for direct attachment to curved Flowline

See catalog page A14 and Submittal Drawing FLP-1 for description.

**Inlet size:**

**1 Slot**

- 6" Round
- 8" Round
- 10" Flat Oval
- 12" Flat Oval
- 14" Flat Oval

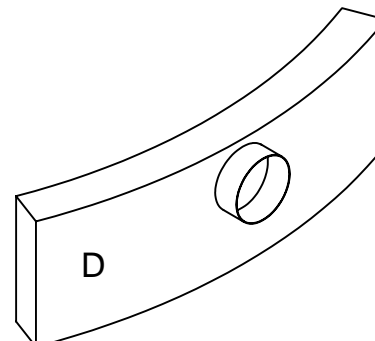
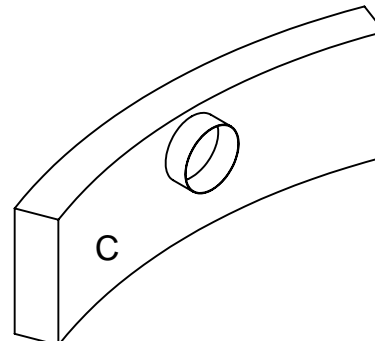
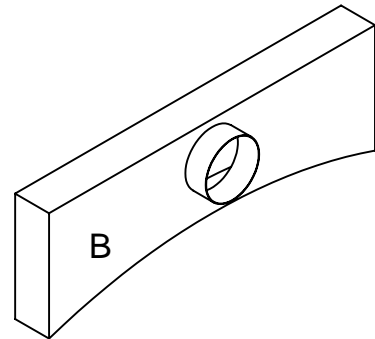
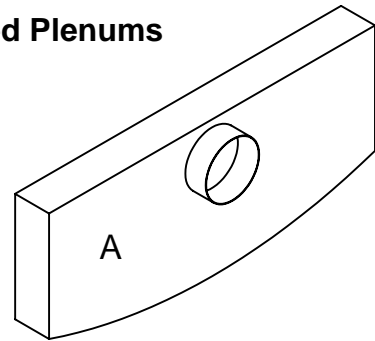
**2 Slot**

- 6" Round
- 8" Round
- 10" Round
- 12" Round
- 14" Round

**Notes:**

1. All curved Flowline and curved plenums are custom engineered products. Information supplied on this submittal form is used to prepare fabrication drawings. These drawings require written customer approval prior to their release for production.
2. Maximum mill finish single section length is 108" (3658), and maximum painted finish single section length is 72" (1829). Longer lengths are furnished in multiple sections with alignment strips, the number and size determined by factory.
3. Adjustable pattern controllers may be on less than 24" (610) centers, as required by the radius, determined by factory.

**Curved Plenums**



<b>SCHEDULE TYPE:</b>
<b>PROJECT:</b>
<b>ENGINEER:</b>
<b>CONTRACTOR:</b>

Page 3 of 3  
 Dimensions are in inches (mm).

DATE	B SERIES	SUPERSEDES	DRAWING NO.
12-29-05	FL	NEW	FLCC