



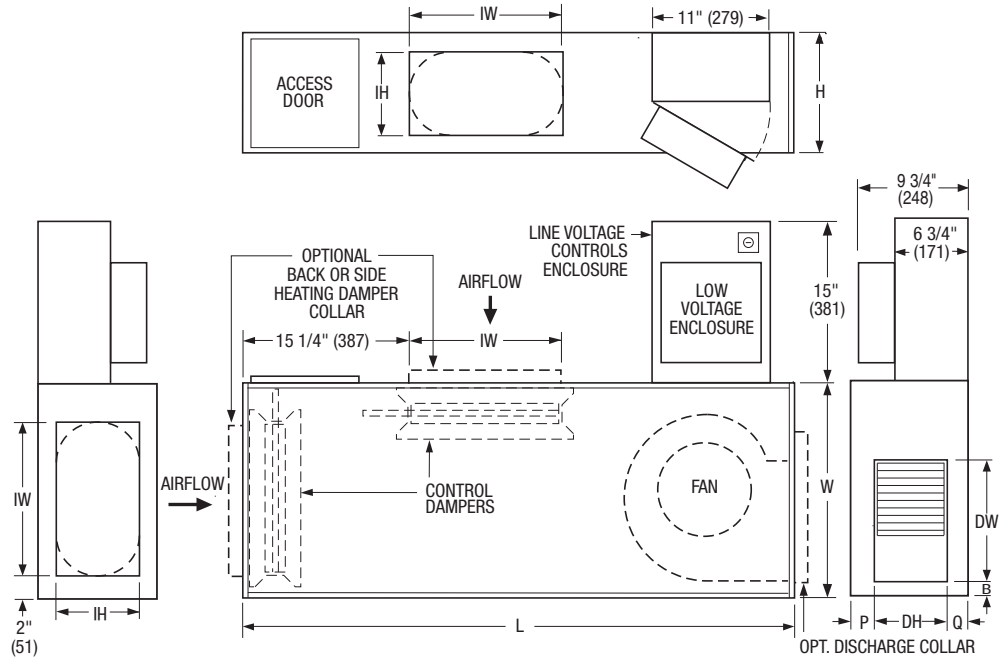
**UNDERFLOOR FAN BOOSTER UNIT WITH  
ECM MOTOR • COOLING AND HEATING  
DAMPERS • VARIABLE OR CONSTANT VOLUME  
MODELS: 38F, 38FW & 38FE • UNIT SIZES: 1, 3 & 5**

**STANDARD FEATURES:**

- Unit incorporates two low leakage dampers for 2 position open/closed operation. One is used for supply air cooling mode airflow (from underfloor plenum) and the other for return air heating mode airflow (ducted).
- 20 ga. (1.0) galvanized steel casing components.
- Full size top access panel.
- Access door for side access to damper actuators.
- Return heating inlet and discharge opening designed for flanged duct connection.
- 1/2" (13) dual density insulation, exposed edges coated to prevent air erosion. Meets requirements to NFPA 90A and UL181.
- Ultra-high efficiency ECM fan motor. EPIC fan volume controller.
- Motor blower assembly mounted on special 16 ga. (1.6) angles and isolated from casing with rubber isolators.
- Single point electrical connection.
- Top access hinged door on the line voltage/fan controls enclosure.
- Terminals ordered with LH Controls as shown are optional. (Controls mounted as standard on RH side. See submittal drawing 38F-1RH).

**Model 38F Basic Unit**

**LEFT HAND DESIGN LAYOUT**



**Dimensional Data. Imperial Units (inches)**

Unit Size	W	H	L	B	P	Q	Inlets IW x IH	Outlet Discharge DW x DH
1	20	8 1/2	50 7/8	1 3/8	3/4	4	14 1/4 x 4 3/4	7 1/8 x 3 3/4
3	20	11	50 7/8	1 3/8	2	2	14 1/4 x 7 3/4	11 1/4 x 7
5	20	15	50 7/8	1 1/4	4 3/4	2	14 1/4 x 11 3/4	11 3/8 x 8 1/4

**Dimensional Data. Metric Units (mm)**

Unit Size	W	H	L	B	P	Q	Inlets IW x IH	Outlet Discharge DW x DH
1	508	216	1292	35	19	102	362 x 121	181 x 95
3	508	279	1292	35	51	51	362 x 197	286 x 178
5	508	381	1292	32	121	51	362 x 298	289 x 210

**Electrical Data**

Unit Size	Motor H.P.	ECM Motor			
		Voltage	120/1/60	208/240/1/60	277/1/60
1	1/3	Watts	277	276	270
		FLA	3.7	1.9	1.9
3	1/3	Watts	420	450	410
		FLA	5.8	3.4	2.9
5	3/4	Watts	930	1080	940
		FLA	12.6	6.2	5.5

FLA = Full load amperage



**OPTIONS:**

- Toggle disconnect switch.
- Fiber-free liner.
- Perforated metal liner.
- Isolator pads.
- Rubber support feet.
- Fan Unit fusing.
- Heating damper collar. Flat oval transition on return inlet for flexible duct connection (back or side location).  
Unit size Collar  
1 8" (9 x 5 7/8")  
3, 5 10" (11 1/8" x 7 3/4") or 12" (14 1/4" x 7 3/4")
- Discharge collar. Flat oval for flexible duct connection.  
Unit size Collar  
1 8" (9 x 5 7/8")  
3 12" (14 1/4" x 7 3/4")  
5 14" (17 3/8" x 7 3/4")
- Special features: \_\_\_\_\_.

SCHEDULE TYPE:

PROJECT:

ENGINEER:

CONTRACTOR:

Page 1 of 2.

Dimensions are in inches (mm).

DATE	B SERIES	SUPERSEDES	DRAWING NO.
3 - 9 - 09	38F	8 - 20 - 08	38F-1DLH



**UNDERFLOOR FAN BOOSTER UNIT WITH  
ECM MOTOR • COOLING AND HEATING  
DAMPERS • HEAT ACCESSORIES  
MODELS: 38FW & 38FE • UNIT SIZES: 1, 3 & 5**

**Hot Water Coil Section  
Model 38FW**

**Standard Features:**

- Coil section installed on unit discharge.
- Coil (and header on multi-circuit units) is installed in insulated casing for increased thermal efficiency.
- 1/2" (13) copper tubes.
- Aluminum ripple fins.
- Sweat connections: One Row 1/2" (13) O.D. male solder. Two and three row 7/8" (22) O.D. male solder.
- Top access panel for inspection and coil cleaning.
- Flanged outlet duct connection.

**Coil Rows:**

- 1-Row    2-Row    3-Row

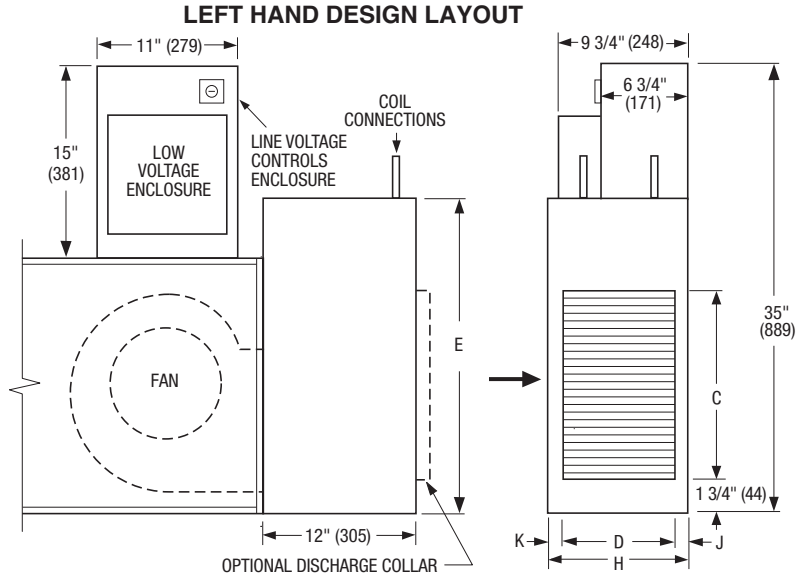
**Coil Connections:**

(Looking in direction of airflow).

- Right hand. Standard.  
 Left hand (illustrated). Optional.

**Option:**

- Discharge collar for flexible duct connection (see page 1 for dimensional data).



Unit Size	Imperial Units (inches)					Metric Units (mm)				
	Outlet Discharge C x D	H	E	J	K	Outlet Discharge C x D	H	E	J	K
1	14 3/4 x 5 3/4	8 1/2	20	1	1 3/4	375 x 146	216	508	25	44
3	14 3/4 x 8 3/4	11	20	1 1/8	1 1/8	375 x 222	278	508	29	29
5	20 x 12 1/2	15	24 3/4	1 1/4	1 1/4	508 x 318	381	629	32	32

**Electric Coil Section Model 38FE**

**Standard Features:**

- Coil installed on unit discharge.
- Insulated heater element wrapper.
- Automatic reset high limit cut-outs (one per element).
- Flanged outlet duct connection.
- Airflow safety switch to prove airflow.
- Single Point electrical connection for entire terminal unit.
- Terminal unit with heater is ETL listed as an assembly.
- Controls mounted as standard on LH side as shown.

**Voltage:**

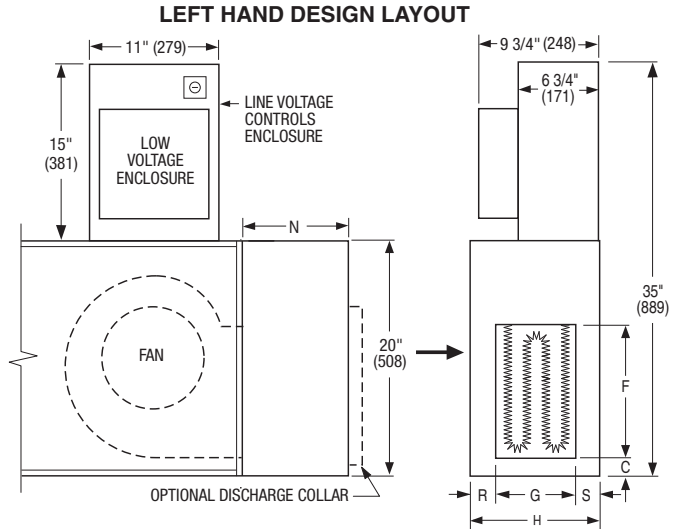
Single phase, 60 Hz.    208V    240V    277V

Three phase, 60 Hz. (Unit Size 3 and 5 only)

- 208V    480V (4 wire wye).    \_\_\_\_\_

**Options:**

- Toggle disconnect switch.  
 Door interlock disconnect switch.  
 Mercury contactors.  
 Power circuit fusing.  
 Class 'A' 80/20 Ni./Cr. Wire.  
 Dust tight construction.  
 Manual reset secondary thermal cut out.  
 Discharge collar for flexible duct connection (see page 1 for dimensional data).



Unit Size	Imperial Units (inches)						Metric Units (mm)					
	Outlet Discharge F x G	H	N	C	R	S	Outlet Discharge F x G	H	N	C	R	S
1	8 1/4 x 6	8 1/2	9	1 3/8	1 1/2	1	210 x 152	216	229	35	38	25
3	11 x 7 3/4	11	9	1	1 5/8	1 5/8	279 x 197	278	229	25	41	41
5	12 x 8 3/4	15	13 3/4	1	5 1/4	1	305 x 222	381	352	25	133	25

SCHEDULE TYPE:

PROJECT:

ENGINEER:

CONTRACTOR:

Page 2 of 2.

Dimensions are in inches (mm).

DATE

B SERIES

SUPERSEDES

DRAWING NO.

3 - 9 - 09

38F

8 - 20 - 08

38F-1DLH