



# UNDERFLOOR FAN BOOSTER UNIT WITH ECM MOTOR • COOLING AND HEATING DAMPERS • VARIABLE OR CONSTANT VOLUME MODELS: 38F, 38FW AND 38FE • UNIT SIZE 6

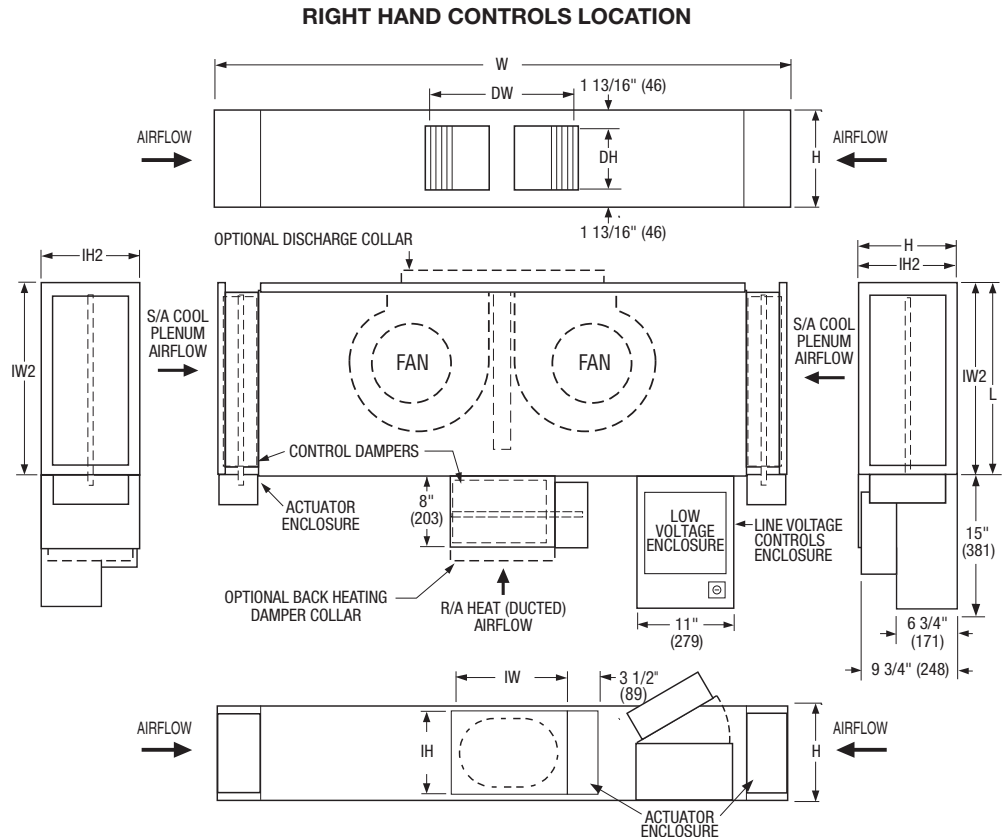
## STANDARD FEATURES:

- 20 ga. (1.0) galvanized steel casing components.
- Unit incorporates three low leakage dampers for 2 position open/closed operation. Two are used for supply air cooling mode (from underfloor plenum) and the other for return air heating mode airflow (ducted).
- Full size top access panel.
- Enclosures for damper actuators.
- Rectangular return heating inlet damper sleeve for ducted connection.
- Discharge opening designed for flanged duct connection.
- 1/2" (13) dual density insulation, exposed edges coated to prevent air erosion. Meets requirements to NFPA 90A and UL181.
- Ultra-high efficiency ECM fan motor. EPIC fan volume controller.
- Motor blower assembly mounted on special 16 ga. (1.6) angles and isolated from casing with rubber isolators.
- Single point electrical connection.
- Top access hinged door on the line voltage/fan controls enclosure.
- Controls mounted as standard on RH side as shown. (LH controls location is optional).

## OPTIONS:

- Toggle disconnect switch.
- Fiber-free liner.
- Perforated metal liner.
- Steri-liner.
- Isolator pads.
- Fan Unit fusing.
- Left hand controls location.
- Heating damper collar. Flat oval transition on return air inlet for flexible duct connection. 10" (11 1/8" x 7 3/4") or 12" (14 1/4" x 7 3/4").
- Discharge collar. Flat oval transition for flexible duct connection. 14" (17 3/8" x 7 3/4").
- Special features: \_\_\_\_\_.

## Model 38F Basic Unit



## Dimensional Data. Imperial Units (inches)

Unit Size	W	H	L	Heating Inlet IW x IH	Cooling Inlets (2) IW2 x IH2	Outlet Discharge DW x DH
6	64	10 1/2	21	15 3/4 x 9 5/8	20 1/2 x 10	16 1/2 x 6 7/8

## Dimensional Data. Metric Units (mm)

Unit Size	W	H	L	Heating Inlet IW x IH	Cooling Inlets (2) IW2 x IH2	Outlet Discharge DW x DH
6	1626	267	533	400 X 244	521 X 254	419 X 175

## Electrical Data

Unit Size	Motor H. P.	ECM Motor			
		Voltage	120/1/60	208/240/1/60	277/1/60
6	2@1/3	Watts	840	840	890
		FLA	10.2	5.3	5.9



FLA = Full load amperage

**SCHEDULE TYPE:**

**PROJECT:**

**ENGINEER:**

**CONTRACTOR:**

DATE

B SERIES

SUPERSEDES

DRAWING NO.

8 - 20 - 08

38F

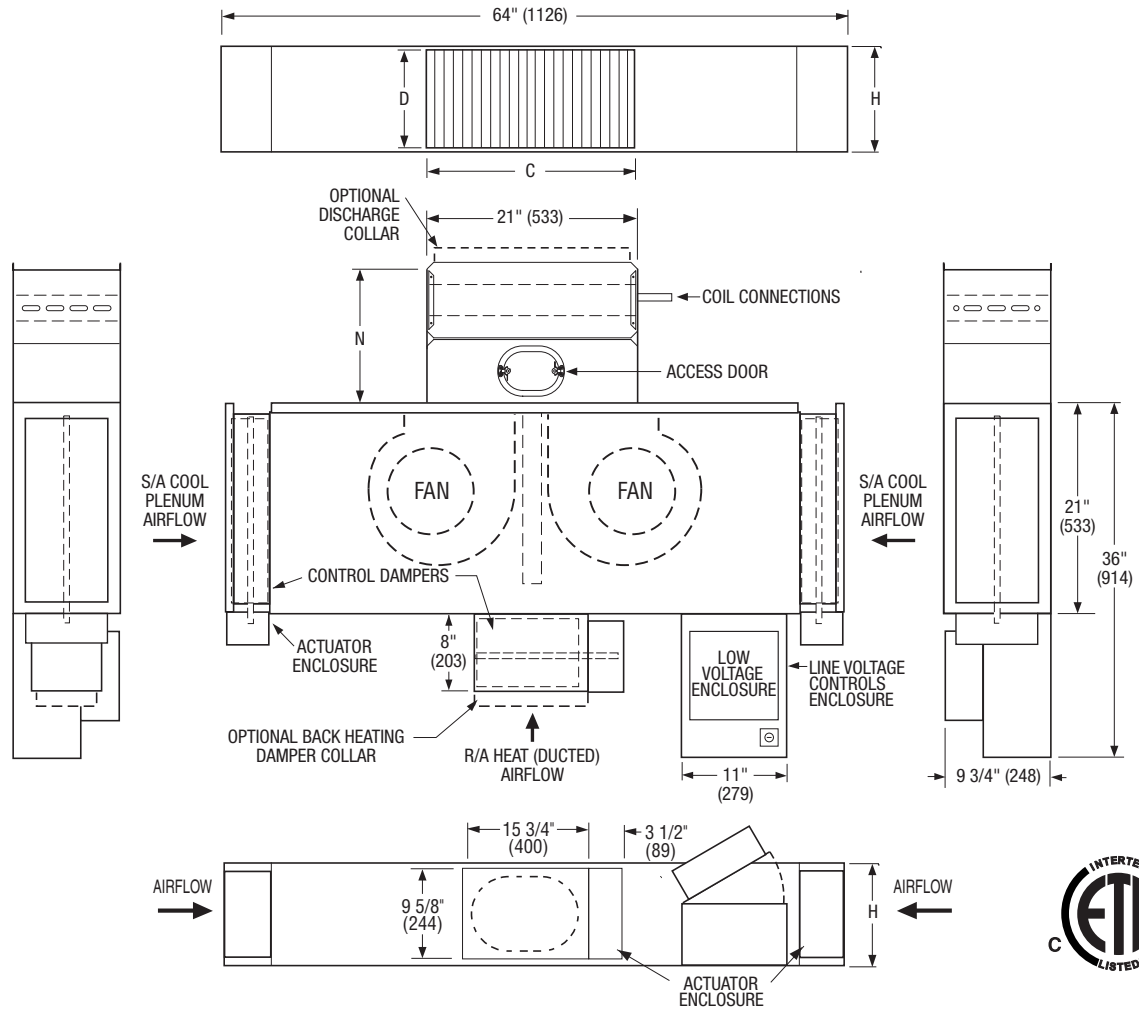
3 - 3 - 08

38F-6DRH



**UNDERFLOOR FAN BOOSTER UNIT WITH  
ECM MOTOR • COOLING & HEATING DAMPERS  
VARIABLE OR CONSTANT VOLUME • HOT WATER HEAT  
MODEL: 38FW • UNIT SIZE 6**

**RIGHT HAND CONTROLS LOCATION**



**Hot Water Coil Section Model 38FW**

**Standard Features:**

- Coil section installed on unit discharge.
- 1/2" (13) copper tubes.
- Aluminum ripple fins.
- Sweat connections: One Row 1/2" (13) O.D. male solder. Two and three row 7/8" (22) O.D. male solder.
- Top access door for inspection and coil cleaning.
- Slip and drive discharge duct connection.

**Coil Rows:**

- 1-Row     2-Row     3-Row

**Coil Connections:**

(Looking in direction of airflow).

- Right hand (illustrated). Standard.  
 Left hand. Optional.

Unit Size	Imperial Units (inches)			Metric Units (mm)		
	Outlet Discharge C x D	H	N	Outlet Discharge C x D	H	N
6	21 x 10	10 1/2	14 1/2	533 X 254	267	368

**Options:**

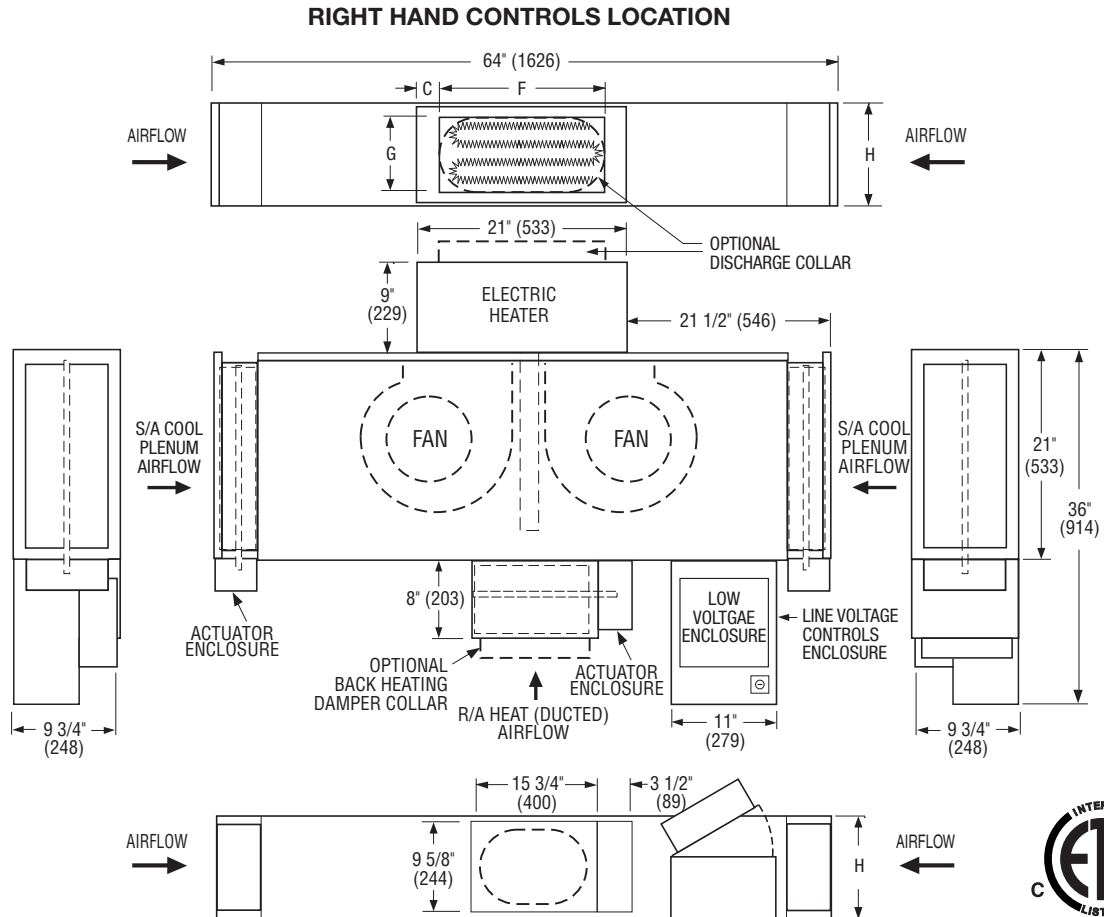
- Heating damper collar. Flat oval transition on return air inlet for flexible duct connection. 10" (11 1/8" x 7 3/4") or 12" (14 1/4" x 7 3/4").
- Discharge collar. Flat oval transition for flexible duct connection. 14" (17 3/8" x 7 3/4").
- Special features: \_\_\_\_\_.

<b>SCHEDULE TYPE:</b>				
<b>PROJECT:</b>				
<b>ENGINEER:</b>	<b>DATE</b>	<b>B SERIES</b>	<b>SUPERSEDES</b>	<b>DRAWING NO.</b>
<b>CONTRACTOR:</b>	8 - 20 - 08	38F	5 - 3 - 08	38F-6DRH



**UNDERFLOOR FAN BOOSTER UNIT WITH  
ECM MOTOR • COOLING & HEATING DAMPERS  
VARIABLE OR CONSTANT VOLUME • ELECTRIC HEAT  
MODEL: 38FE • UNIT SIZE 6**

**Electric Coil Section Model 38FE**



**Standard Features:**

- Coil installed on unit discharge.
- Insulated heater element wrapper.
- Automatic reset high limit cut-outs (one per element).
- Flanged outlet duct connection.
- Airflow safety switch to prove airflow.
- Single point electrical connection for entire terminal unit.
- Terminal unit with heater is ETL listed as an assembly.
- Controls mounted as standard on RH side as shown.

**Voltage:**

Single phase, 60 Hz.  208V  240V  277V

Three phase, 60 Hz.

208V  480V (4 wire wye).  \_\_\_\_\_

**Options:**

- Toggle disconnect switch.
- Door interlock disconnect switch.
- Mercury contactors.

Unit Size	Imperial Units (inches)			Metric Units (mm)		
	Outlet Discharge F x G	H	C	Outlet Discharge F x G	H	C
6	17 5/8 x 7 1/4	10 1/2	1 11/16	448 X 184	267	41

- Power circuit fusing.
- Class 'A' 80/20 Ni./Cr. Wire.
- Dust tight construction.
- Manual reset secondary thermal cut out.
- Heating damper collar. Flat oval transition on return air inlet for flexible duct connection. 10" (11 1/8" x 7 3/4") or 12" (14 1/4" x 7 3/4").
- Discharge collar. Flat oval transition for flexible duct connection. 14" (17 3/8" x 7 3/4").
- Special features: \_\_\_\_\_

Dimensions are in inches (mm).

<b>SCHEDULE TYPE:</b>				
<b>PROJECT:</b>				
<b>ENGINEER:</b>	<b>DATE</b>	<b>B SERIES</b>	<b>SUPERSEDES</b>	<b>DRAWING NO.</b>
<b>CONTRACTOR:</b>	8 - 20 - 08	38F	5 - 3 - 08	38F-6DRH