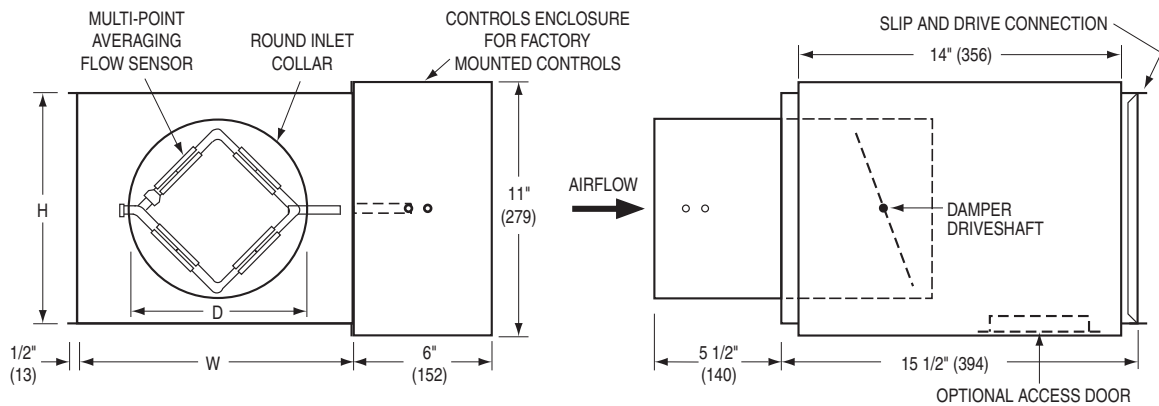




SINGLE DUCT TERMINAL UNIT
DIGITAL OR ANALOG ELECTRONIC CONTROL
PRESSURE INDEPENDENT
VARIABLE OR CONSTANT VOLUME
MODELS: D3101 AND A3101



Dimensional Data

Unit Size	Airflow Range cfm (l/s)	W	H	D
4	0 – 180 (0 – 85)	12 (305)	8 (203)	3 7/8 (98) Round
5	0 – 325 (0 – 153)	12 (305)	8 (203)	4 7/8 (124) Round
6	0 – 450 (0 – 212)	12 (305)	8 (203)	5 7/8 (149) Round
7	0 – 650 (0 – 307)	12 (305)	10 (254)	6 7/8 (175) Round
8	0 – 900 (0 – 425)	12 (305)	10 (254)	7 7/8 (200) Round
9	0 – 1150 (0 – 543)	14 (356)	12 1/2 (318)	8 7/8 (225) Round
10	0 – 1500 (0 – 708)	14 (356)	12 1/2 (318)	9 7/8 (251) Round
12	0 – 2050 (0 – 967)	16 (406)	15 (381)	11 7/8 (302) Round
14	0 – 2740 (0 – 1293)	20 (508)	17 1/2 (445)	13 7/8 (352) Round
16	0 – 3680 (0 – 1737)	24 (610)	18 (457)	15 7/8 (403) Round
24 x 16	0 – 6800 (0 – 3209)	38 (965)	18 (457)	23 7/8 x 15 7/8 (606 x 403) Rect.



Standard Features:

- 22 ga. (0.86) zinc coated steel casing, mechanically sealed, low leakage construction. Leakage is less than 1% of the terminal rated airflow at 1" w.g. (250 Pa).
- 2 x 20 ga. (0.86) round laminated butterfly damper with a polyurethane peripheral gasket. 90° rotation, CW to close. Tight shut-off. Damper leakage is less the 1% of the terminal rated airflow at 3" w.g. (750 pa.) and less than 2% at 6" w.g. (1500 pa.) as tested in accordance with ANSI / ASHRAE Standard 130.
- 1/2" (13) dia. plated steel drive shaft. An indicator mark on the end of the shaft shows damper position.
- Unit sizes 4–16 feature round inlet collars.

- Multi-point averaging Diamond Flow Sensor. Aluminum construction. Supplied with balancing tees.
- Rectangular discharge with slip and drive cleat duct connection.
- Full NEMA 1 type low voltage controls enclosure for factory mounted controls.
- 3/4" (19), dual density insulation, exposed edges coated to prevent air erosion. Meets the requirements of NFPA 90A and UL 181.
- Right-hand controls location is standard (shown) when looking in direction of airflow. Optional left hand controls mounting is available.

Controls:

- Digital (by others).
 - Analog (by Nailor).
- See separate submittal.

Options and Accessories:

- Steri-liner.
- Fiber-free liner.
- Solid metal liner.
- 1" (25) liner.
- Bottom access door.
- 24VAC Control transformer.
- Hanger brackets.
- Controls enclosure for field mounted controls.
- Dust tight enclosure seal.
- Special Features:

SCHEDULE TYPE

PROJECT

ENGINEER

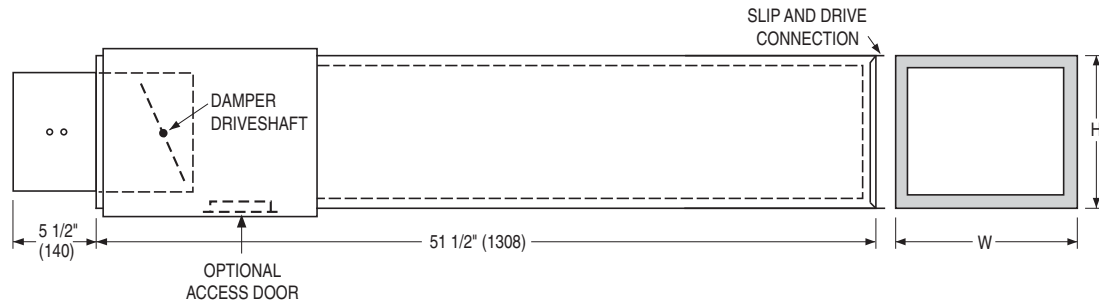
CONTRACTOR

Page 1 of 2.
 Dimensions are in inches (mm).

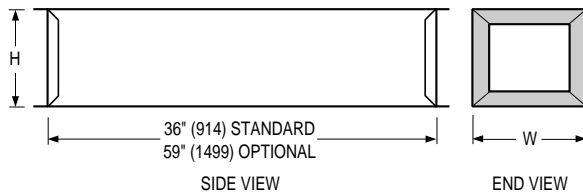
DATE	B SERIES	SUPERSEDES	DRAWING NO.
8 - 3 - 09	3100	3 - 5 - 09	D3101

Integral Sound Attenuator

- Single continuous length terminal construction minimizes casing leakage.
- Continuous internal insulation reduces insulation seams and minimizes airflow disturbance.
- Supplied with same liner as basic unit.

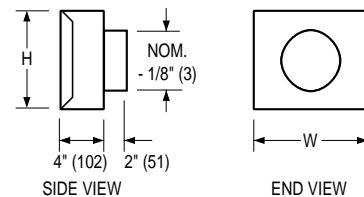


AT Discharge Sound Attenuator (loose)



- Shipped loose for field attachment.
 - Slip and drive connection.
 - Supplied as standard with same liner as basic unit.
- AT313 Standard.
 AT315 Optional.
 Special Features: _____

FF Round Discharge Collar



Dimensional Data

Unit Size	W	H	FF Outlet Size
4, 5, 6	12 (305)	8 (203)	4, 5, 6 (102, 127, 152)
7, 8	12 (305)	10 (254)	7, 8 (178, 203)
9, 10	14 (356)	12 1/2 (318)	9, 10 (229, 254)
12	16 (406)	15 (381)	12 (305)
14	20 (508)	17 1/2 (445)	14 (356)
16	24 (610)	18 (457)	16 (406)
24 x 16	38 (965)	18 (457)	-

SCHEDULE TYPE

PROJECT

ENGINEER

CONTRACTOR

Page 2 of 2.
Dimensions are in inches (mm)

DATE

B SERIES

SUPERSEDES

DRAWING NO.

8 - 3 - 09

3100

3 - 5 - 09

D3101