

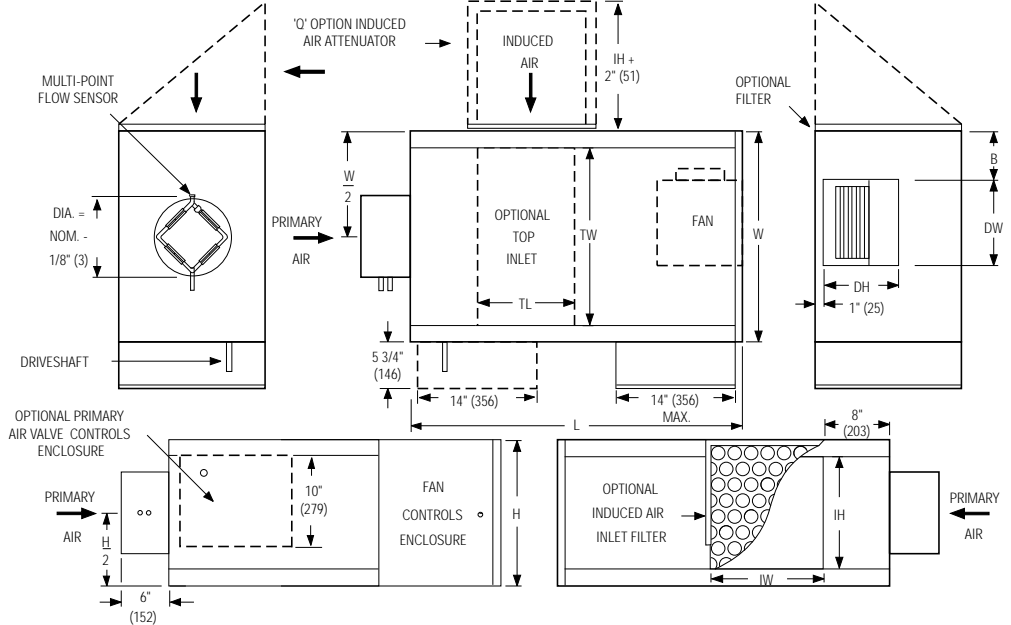
DESCRIPTION:

- 16 ga. (1.6) galvanized steel channel frame with 20 ga. (1.0) casing components.
- 16 ga. (1.6) galvanized steel inclined opposed blade damper. 45° rotation. CW to close.
- Multi-point averaging Diamond Flow sensor.
- Full size access panels on three sides.
- Energy efficient PSC fan motor with overload protection.
- Solid state fan speed controller with minimum voltage stop.
- 3/4" (19) dual density insulation, exposed edges coated to prevent air erosion. Meets requirements of NFPA 90A and UL 181.
- Single point electrical and / or pneumatic main air connection.
- Discharge opening for flanged duct connection.
- Full primary air valve low voltage enclosure for factory mounted DDC and analog electronic controls.
- Controls mounted as standard on RH side as shown. Terminals ordered with LH controls (optional) are inverted and discharge duct hanging elevation will therefore change.

OPTIONS:

- 'Q' Option – Induced Air Inlet Attenuator.
- Filter frame and 1" (25) disposable filter.
- Toggle disconnect switch.
- Steri-liner.
- Fiber-free liner.
- Solid metal liner.
- Perforated metal liner.
- Fan unit fusing.
- Hanger brackets.
- Top entry induced air inlet.
- Left-hand controls location.
- Special features

Model 35S and Basic Unit



Dimensional Data. Imperial Units (inches)

| Unit Size | Inlet Size | W | H | L | B | Induced Air Inlet | | Outlet Discharge DW x DH | Filter Size | |
|-----------|---------------|----|----|----|-------|---------------------|--------------------|--------------------------|-------------------|------------------|
| | | | | | | Side (std.) IW x IH | Top (opt.) TL x TW | | Side Inlet (std.) | Top Inlet (opt.) |
| 1 | 5, 6 | 18 | 14 | 36 | 3 1/2 | 8 x 10 | 10 x 14 | 7 1/4 x 10 1/2 | 10 x 12 | 14 x 16 |
| 2 | 6, 8 | 18 | 14 | 36 | 3 1/2 | 8 x 10 | 10 x 14 | 9 1/4 x 10 1/2 | 10 x 12 | 14 x 16 |
| 3 | 6, 8, 10, 12 | 18 | 18 | 36 | 3 1/2 | 12 x 14 | 14 x 14 | 9 1/4 x 10 1/2 | 14 x 16 | 16 x 16 |
| 4 | 8, 10, 12, 14 | 26 | 18 | 41 | 6 | 14 x 14 | 12 x 22 | 12 x 10 1/2 | 16 x 16 | 16 x 25 |
| 5 | 10, 12, 14 | 26 | 18 | 41 | 5 | 14 x 14 | 12 x 22 | 13 1/4 x 11 1/2 | 16 x 16 | 16 x 25 |
| 6 | 12, 14, 16 | 30 | 19 | 44 | 6 | 16 x 15 | 14 x 26 | 13 1/4 x 11 1/2 | 17 x 18 | 18 x 28 |

Dimensional Data. Metric Units (mm)

| Unit Size | Inlet Size | W | H | L | B | Induced Air Inlet | | Outlet Discharge DW x DH | Filter Size | |
|-----------|--------------------|-----|-----|------|-----|---------------------|--------------------|--------------------------|-------------------|------------------|
| | | | | | | Side (std.) IW x IH | Top (opt.) TL x TW | | Side Inlet (std.) | Top Inlet (opt.) |
| 1 | 127, 152 | 457 | 356 | 914 | 89 | 203 x 254 | 254 x 356 | 184 x 267 | 254 x 305 | 356 x 406 |
| 2 | 152, 152 | 457 | 356 | 914 | 89 | 203 x 254 | 254 x 356 | 235 x 267 | 254 x 305 | 356 x 406 |
| 3 | 152, 203, 254, 305 | 457 | 457 | 914 | 89 | 305 x 356 | 356 x 356 | 235 x 267 | 356 x 406 | 406 x 406 |
| 4 | 203, 254, 305, 356 | 660 | 457 | 1041 | 152 | 356 x 356 | 305 x 559 | 305 x 267 | 406 x 406 | 406 x 635 |
| 5 | 254, 305, 356 | 660 | 457 | 1041 | 127 | 356 x 356 | 305 x 559 | 337 x 292 | 406 x 406 | 406 x 635 |
| 6 | 305, 356, 406 | 762 | 483 | 1118 | 152 | 406 x 381 | 356 x 660 | 337 x 292 | 432 x 457 | 457 x 711 |

Electrical Data

| Unit Size | Motor H.P. | PSC Motor FLA | | |
|-----------|------------|---------------|----------|----------|
| | | 120/1/60 | 208/1/60 | 277/1/60 |
| 1 | 1/10 | 3.0 | 2.0 | 0.9 |
| 2 | 1/10 | 3.3 | 2.0 | 1.0 |
| 3 | 1/4 | 5.8 | 3.6 | 1.8 |
| 4 | 1/3 | 6.2 | 4.1 | 2.0 |
| 5 | 1/2 | 10.1 | 6.5 | 3.3 |
| 6 | 3/4 | 13.4 | 8.4 | 4.5 |

FLA = Full load amperage



| | | | | |
|-----------------------|--|-------------|-----------------|--------------------|
| SCHEDULE TYPE: | | | | |
| PROJECT: | | | | |
| ENGINEER: | | DATE | B SERIES | SUPERSEDES |
| CONTRACTOR: | | 11 - 2 - 09 | 3500 | 9 - 9 - 08 |
| | | | | DRAWING NO. |
| | | | | 35S-1A |



FAN POWERED TERMINAL UNIT
SERIES FLOW • CONSTANT VOLUME
HEAT ACCESSORIES
MODELS: 35SW AND 35SE • UNIT SIZES 1 – 6

Hot Water Coil Section Model 35SW

Standard Features:

- Coil section installed on unit discharge.
- Coil (and header on multi-circuit units) is installed in insulated casing for increased thermal efficiency.
- 1/2" (13) copper tubes.
- Aluminum ripple fins.
- Sweat Connections: Size 1, 2 and 3 one row, 1/2" (13) O.D. male solder. All others 7/8" (22) O.D. male solder.
- Top and bottom access panels for inspection and coil cleaning.
- Flanged outlet duct connection.

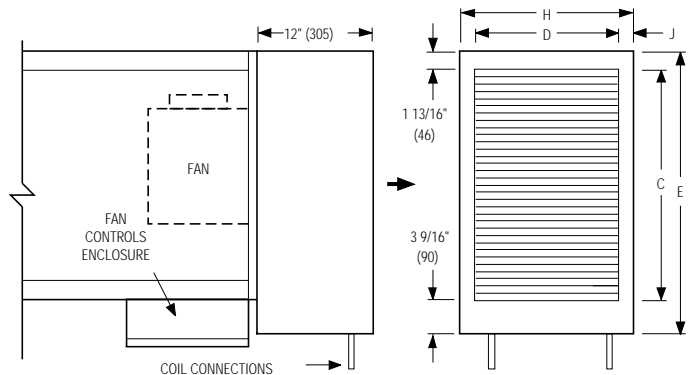
Coil Rows:

- 1-Row 2-Row 3-Row

Coil Hand Connections:

(Looking in direction of airflow).

- Right hand (illustrated). Standard.
 Left hand. Optional.

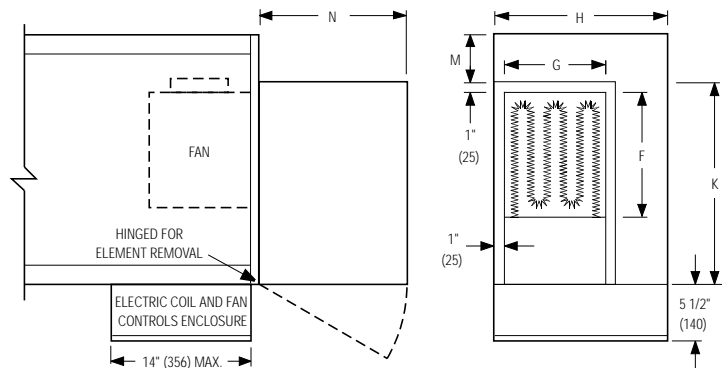


| Unit Size | Imperial Units (inches) | | | | Metric Units (mm) | | | |
|-----------|-------------------------|--------|----|--------|------------------------|-----|-----|----|
| | Outlet Duct Size C x D | E | H | J | Outlet Duct Size C x D | E | H | J |
| 1, 2 | 16 x 12 1/8 | 21 3/8 | 14 | 15/16 | 406 x 308 | 543 | 356 | 24 |
| 3 | 16 x 14 7/8 | 21 3/8 | 18 | 1 9/16 | 406 x 378 | 543 | 457 | 40 |
| 4, 5 | 24 x 14 7/8 | 29 3/8 | 18 | 1 9/16 | 610 x 378 | 746 | 457 | 40 |
| 6 | 28 x 17 1/8 | 33 3/8 | 19 | 15/16 | 711 x 435 | 848 | 483 | 24 |

Electric Coil Section Model 35SE

Standard Features:

- Unique hinged heater design permits easy access, removal and replacement of heater element without disturbing ductwork.
- Coil installed on unit discharge.
- Insulated coil element wrapper.
- Automatic reset high limit cut-outs (one per element).
- Single point electrical connection for entire terminal unit.
- Positive pressure airflow switch.
- Flanged outlet duct connection.
- Terminal unit with coil is ETL Listed as an assembly.
- Controls mounted as standard on RH side as shown. Terminals ordered with LH controls (optional) are inverted and discharge duct hanging elevation will therefore change.



Voltage:

Single phase, 60 Hz.

- 208V 240V 277V

Three phase, 60 Hz.

- 208V 480V (4 wire wye).

Options:

- Toggle disconnect switch (includes fan).
 Door interlock disconnect switch.
 Mercury contactors.
 Power circuit fusing.
 Class 'A' 80/20 Ni./Ch. wire.
 Dust tight construction.
 Manual reset secondary thermal cut out.

| Unit Size | Imperial Units (inches) | | | | | Metric Units (mm) | | | | |
|-----------|-------------------------|--------|----|-------|--------|------------------------|-----|-----|-----|-----|
| | Outlet Duct Size F x G | K | H | M | N | Outlet Duct Size F x G | K | H | M | N |
| 1, 2 | 10 1/4 x 10 1/2 | 15 1/2 | 14 | 2 1/2 | 12 1/2 | 260 x 267 | 394 | 356 | 64 | 318 |
| 3 | 10 1/4 x 10 1/2 | 15 1/2 | 18 | 2 1/2 | 15 1/4 | 260 x 267 | 394 | 457 | 64 | 387 |
| 4 | 13 x 10 1/2 | 21 | 18 | 5 | 15 1/4 | 330 x 267 | 533 | 457 | 127 | 387 |
| 5 | 14 1/4 x 11 3/4 | 22 | 18 | 4 | 15 1/4 | 362 x 298 | 559 | 457 | 102 | 387 |
| 6 | 14 1/4 x 11 3/4 | 25 | 19 | 5 | 15 1/4 | 362 x 298 | 635 | 483 | 127 | 387 |

SCHEDULE TYPE:

PROJECT:

ENGINEER:

CONTRACTOR:

Page 2 of 2.
Dimensions are in inches (mm).

DATE

B SERIES

SUPERSEDES

DRAWING NO.

11 - 2 - 09

3500

9 - 9 - 08

35S-1A