



**FAN POWERED TERMINAL UNIT**  
**SERIES FLOW • CONSTANT VOLUME**  
**MODELS: 35S, 35SW AND 35SE • UNIT SIZE 7**

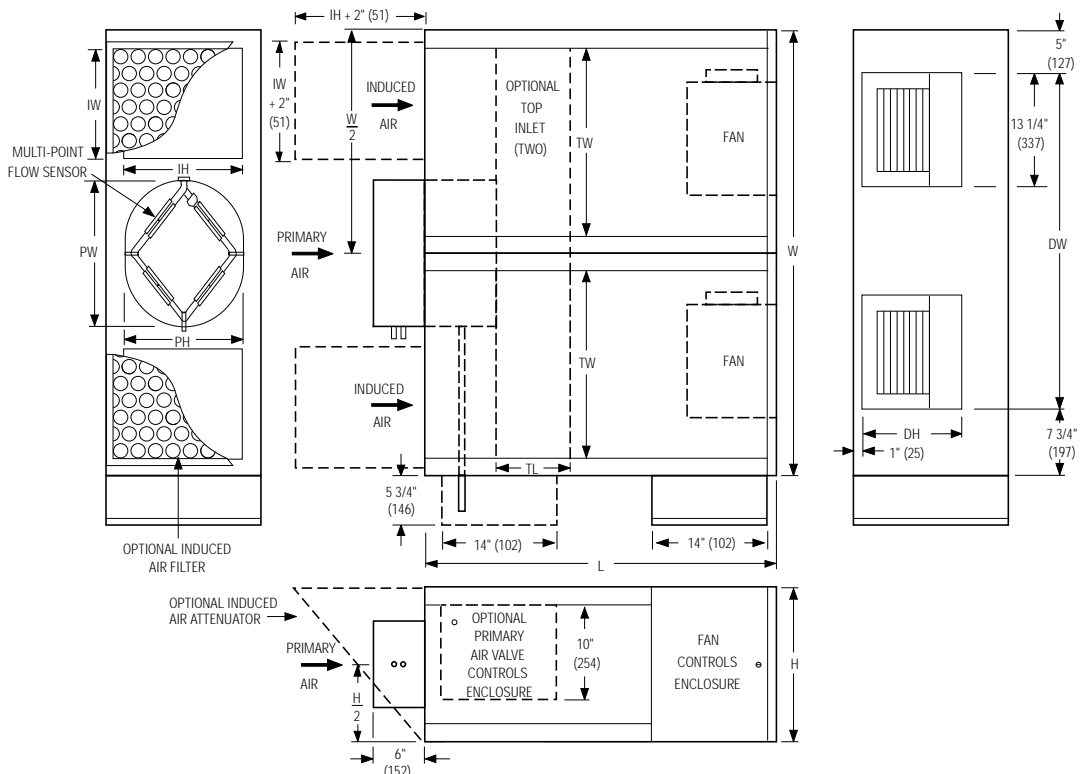
**DESCRIPTION:**

- 16 ga. (1.6) galvanized steel channel frame with 20 ga. (1.0) casing components.
- 16 ga. (1.6) galvanized steel inclined opposed blade damper. 45° rotation. CW to close.
- Multi-point averaging Diamond Flow sensor.
- Full size access panels on three sides.
- Energy efficient PSC fan motor with overload protection.
- Solid state fan speed controller with minimum voltage stop.
- 3/4" (19) dual density insulation, exposed edges coated to prevent air erosion. Meets requirements of NFPA 90A and UL 181.
- Single point electrical and / or pneumatic main air connection.
- Discharge opening for flanged duct connection.
- Full primary air valve low voltage enclosure for factory mounted DDC and analog electronic controls.
- Controls mounted as standard on RH side as shown. Terminals ordered with LH controls (optional) are inverted and discharge duct hanging elevation will therefore change.

**OPTIONS:**

- 'Q' option - Induced air inlet attenuators (2). Shipped loose.
- Filter frame and 1" (25) disposable filter.
- Toggle disconnect switch.
- Steri-liner.
- Fiber-free liner.
- Solid metal liner.
- Perforated metal liner.
- Fan unit fusing.
- Hanger brackets.
- Top entry induced air inlet.
- Left-hand controls location.
- Special features

**Model 35S and Basic Unit**



**Dimensional Data. Imperial Units (inches)**

Unit Size	Inlet		W	H	L	Induced Air Inlet		Outlet Discharge DW x DH	Filter Size	
	Size	PW x PH				Side (std.) IW x IH	Top (opt.) TL x TW		Side Inlet (std.)	Top Inlet (opt.)
7	14 rnd.	13 7/8	52	18	41	12 x 14	8 1/2 x 22	39 1/4 x 11 1/2	14 x 16	16 x 25
	16 rnd.	15 7/8								
	18 oval	20 3/16 x 13 7/8								

**Dimensional Data. Metric Units (mm)**

Unit Size	Inlet		W	H	L	Induced Air Inlet		Outlet Discharge DW x DH	Filter Size	
	Size	PW x PH				Side (std.) IW x IH	Top (opt.) TL x TW		Side Inlet (std.)	Top Inlet (opt.)
178	356 rnd.	352	1321	457	1041	305 x 356	216 x 559	997 x 292	356 x 406	406 x 635
	407 rnd.	403								
	457 oval	513 x 352								

**Electrical Data**

Motor H.P.	PSC Motor FLA		
	120/1/60	208/1/60	277/1/60
2 @ 1/2	20.2	13.0	6.6

FLA = Full load amperage



www.aridirectory.org

Page 1 of 2.

For heat options; see page 2.  
 Dimensions are in inches (mm).

<b>SCHEDULE TYPE:</b>		<b>DATE</b>	<b>B SERIES</b>	<b>SUPERSEDES</b>	<b>DRAWING NO.</b>
<b>PROJECT:</b>		9 - 9 - 08	3500	2 - 13 - 06	35S-2A
<b>ENGINEER:</b>					
<b>CONTRACTOR:</b>					



**FAN POWERED TERMINAL UNIT**  
**SERIES FLOW • CONSTANT VOLUME**  
**HEAT ACCESSORIES**  
**MODELS: 35SW AND 35SE • UNIT SIZE 7**

**Hot Water Coil Section Model 35SW**

**Standard Features:**

- Coil section installed on unit discharge.
- Coil and header are installed in insulated casing for increased thermal efficiency.
- 1/2" (13) copper tubes.
- Aluminum ripple fins.
- Sweat connections: One and two row, 7/8" (22) O. D. male solder. Three row 1 3/8" (35) O.D. male solder.
- Top and bottom access panels for inspection and coil cleaning.
- Flanged outlet duct connection.

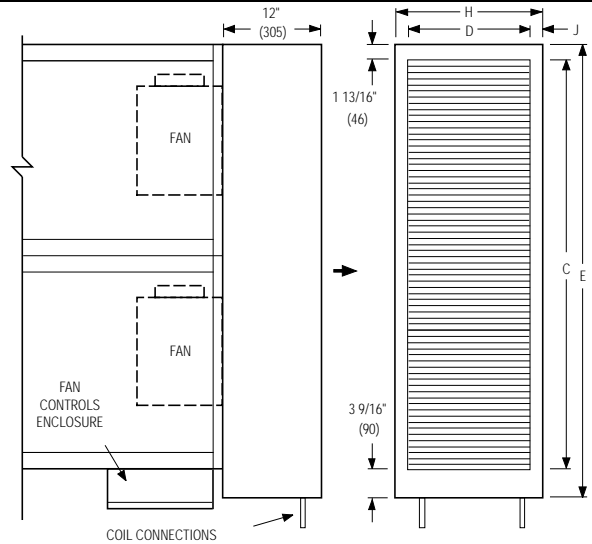
**Coil Rows:**

- 1-Row     2-Row     3-Row

**Coil Hand Connections:**

(Looking in direction of airflow).

- Right hand (illustrated). Standard.  
 Left hand. Optional.



Unit Size	Imperial Units (inches)			Metric Units (mm)				
	Outlet Duct Size C x D	E	H	J	Outlet Duct Size C x D	E	H	J
7	50 x 14 7/8	55 3/8	18	1 9/16	1270 x 378	1407	457	40

**Electric Coil Section Model 35SE**

**Standard Features:**

- Unique hinged heater design permits easy access, removal and replacement of heater element without disturbing ductwork.
- Coil installed on unit discharge.
- Insulated coil element wrapper.
- Automatic reset high limit cut-outs (one per element).
- Single point electrical connection for entire terminal unit.
- Positive pressure airflow switch.
- Flanged outlet duct connection.
- Terminal unit with coil is ETL Listed as an assembly.
- Controls mounted as standard on RH side as shown. Terminals ordered with LH controls (optional) are inverted and discharge duct hanging elevation will therefore change.

**Voltage:**

Single phase, 60 Hz.

- 208V     240V     277V

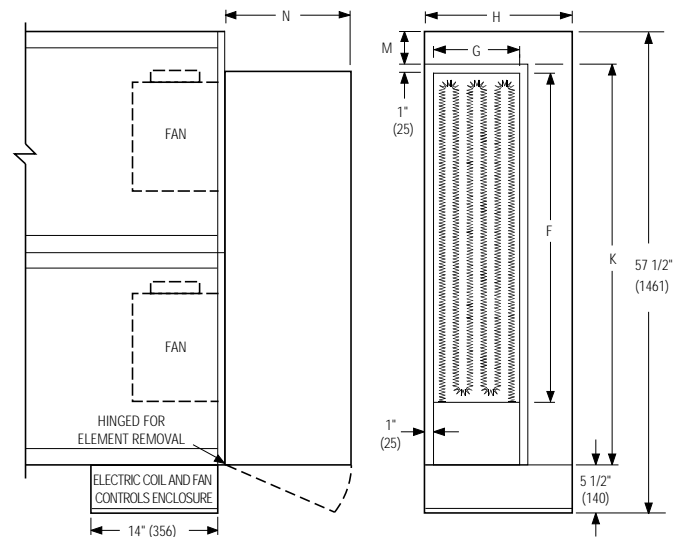
Three phase, 60 Hz.

- 208V     480V (4 wire wye).

\_\_\_\_\_

**Options:**

- Toggle disconnect switch (includes fan).
- Door interlock disconnect switch.
- Mercury contactors.
- Power circuit fusing.
- Class 'A' 80/20 Ni./Ch. wire.
- Dust tight construction.
- Manual reset secondary thermal cut out.



Unit Size	Imperial Units (inches)				Metric Units (mm)					
	Outlet Duct Size F x G	K	H	M	N	Outlet Duct Size F x G	K	H	M	N
7	40 1/4 x 11 3/4	48	18	4	15 1/4	1022 x 298	1219	457	102	387

<b>SCHEDULE TYPE:</b>					
<b>PROJECT:</b>					
<b>ENGINEER:</b>		<b>DATE</b>	<b>B SERIES</b>	<b>SUPERSEDES</b>	<b>DRAWING NO.</b>
<b>CONTRACTOR:</b>		9 - 9 - 08	3500	10 - 01 - 01	35S-2A