



FAN POWERED TERMINAL UNIT WITH ECM MOTOR
SERIES FLOW • CONSTANT VOLUME
MODELS: 35S, 35SW AND 35SE • UNIT SIZES 1, 3 & 5

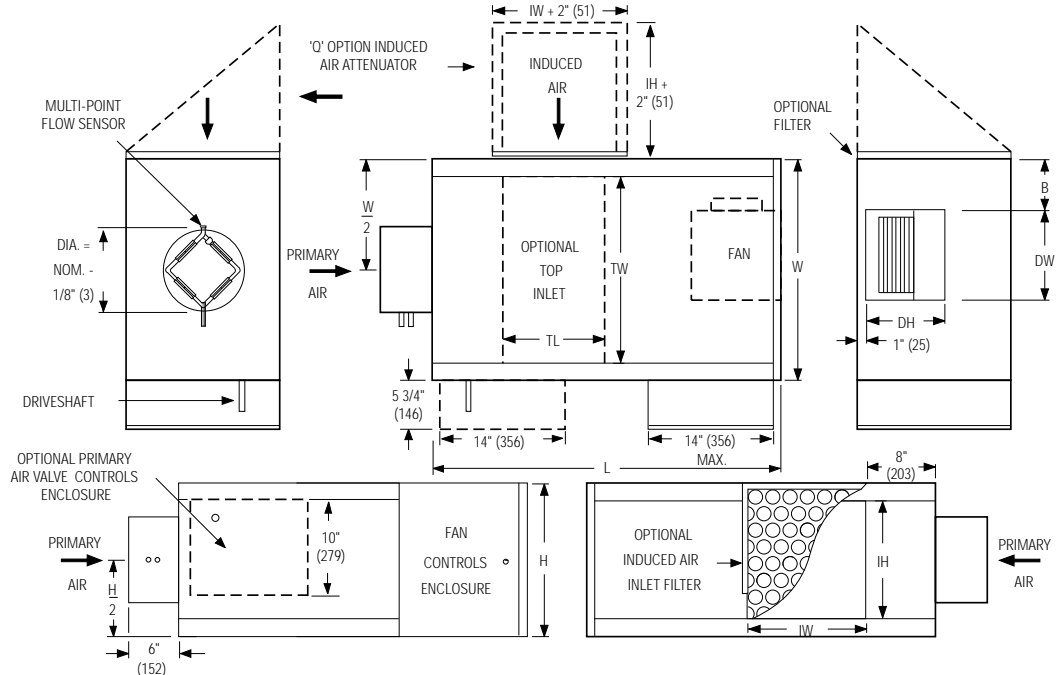
DESCRIPTION:

- 16 ga. (1.6) galvanized steel channel frame with 20 ga. (1.0) casing components.
- 16 ga. (1.6) galvanized steel inclined opposed blade damper. 45° rotation. CW to close.
- Multi-point averaging Diamond Flow sensor.
- Full size access panels on three sides.
- Ultra-high efficiency ECM fan motor. EPIC fan volume controller.
- 3/4" (19) dual density insulation, exposed edges coated to prevent air erosion. Meets requirements of NFPA 90A and UL 181.
- Single point electrical and / or pneumatic main air connection.
- Discharge opening for flanged duct connection.
- Full primary air valve low voltage enclosure for factory mounted DDC and analog electronic controls.
- Controls mounted as standard on RH side as shown. Terminals ordered with LH controls (optional) are inverted and discharge duct hanging elevation will therefore change.

OPTIONS:

- 'Q' Option – Induced Air Inlet Attenuator.
- Filter frame and 1" (25) disposable filter.
- Toggle disconnect switch.
- Steri-liner.
- Fiber-free liner.
- Solid metal liner.
- Perforated metal liner.
- Fan unit fusing.
- Hanger brackets.
- Top entry induced air inlet.
- Left-hand controls location.
- Special features

Model 35S and Basic Unit



Dimensional Data. Imperial Units (inches)

Unit Size	Inlet Size	W	H	L	B	Induced Air Inlet		Outlet Discharge DW x DH	Filter Size	
						Side (std.) IW x IH	Top (opt.) TL x TW		Side Inlet (std.)	Top Inlet (opt.)
1	5, 6, 7, 8	18	14	36	6	8 x 10	10 x 14	7 1/4 x 10 1/2	10 x 12	14 x 16
3	6, 8, 10, 12	18	18	36	3 1/2	12 x 14	14 x 14	9 1/4 x 10 1/2	14 x 16	16 x 16
5	10, 12, 14	26	18	41	5	14 x 14	12 x 22	13 1/4 x 11 1/2	16 x 16	16 x 25

Dimensional Data. Metric Units (mm)

Unit Size	Inlet Size	W	H	L	B	Induced Air Inlet		Outlet Discharge DW x DH	Filter Size	
						Side (std.) IW x IH	Top (opt.) TL x TW		Side Inlet (std.)	Top Inlet (opt.)
1	127, 152, 178, 203	457	356	914	152	203 x 254	254 x 356	184 x 267	254 x 305	356 x 406
3	152, 203, 254, 305	457	457	914	89	305 x 356	356 x 356	235 x 267	356 x 406	406 x 406
5	254, 305, 356	660	457	1041	127	356 x 356	305 x 559	337 x 292	406 x 406	406 x 635

Electrical Data

Unit Size	Motor H.P.	ECM FLA			
		120/1/60	208/1/60	240/1/60	277/1/60
1	*	2.8	1.9	1.7	1.6
3	*	5.7	3.4	3.5	3.1
5	*	10.9	7.4	7.0	6.1

* The ECM is a variable horsepower motor. Refer to Selectwoks Schedule. FLA = Full load amperage



Page 1 of 2.

For heat options; see page 2. Dimensions are in inches (mm).

SCHEDULE TYPE:				
PROJECT:				
ENGINEER:				
CONTRACTOR:				
DATE	B SERIES	SUPERSEDES	DRAWING NO.	
4 - 20 - 10	3500	10 - 27 - 09	35S-3A	



**FAN POWERED TERMINAL UNIT WITH ECM MOTOR
SERIES FLOW • CONSTANT VOLUME
HEAT ACCESSORIES
MODELS: 35SW AND 35SE • UNIT SIZES 1, 3 & 5**

Hot Water Coil Section Model 35SW

Standard Features:

- Coil section installed on unit discharge.
- Coil (and header on multi-circuit units) is installed in insulated casing for increased thermal efficiency.
- 1/2" (13) copper tubes.
- Aluminum ripple fins.
- Sweat Connections: Size 3 one row 1/2" (13) O.D. male solder. All other 7/8" (22) O.D. male solder.
- Top and bottom access panels for inspection and coil cleaning.
- Flanged outlet duct connection.

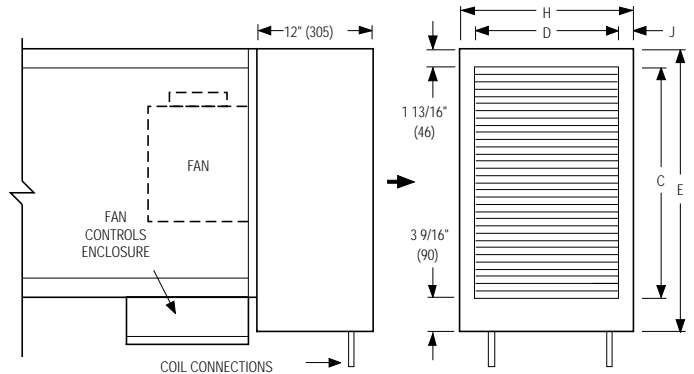
Coil Rows:

- 1-Row 2-Row 3-Row

Coil Hand Connections:

(Looking in direction of airflow).

- Right hand (illustrated). Standard.
 Left hand. Optional.



Unit Size	Imperial Units (inches)				Metric Units (mm)			
	Outlet Duct Size C x D	E	H	J	Outlet Duct Size C x D	E	H	J
1	16 x 12 1/8	21 3/8	14	15/16	406 x 308	543	356	24
3	16 x 14 7/8	21 3/8	18	1 9/16	406 x 378	543	457	40
5	24 x 14 7/8	29 3/8	18	1 9/16	610 x 378	746	457	40

Electric Coil Section Model 35SE

Standard Features:

- Unique hinged heater design permits easy access, removal and replacement of heater element without disturbing ductwork.
- Coil installed on unit discharge.
- Insulated coil element wrapper.
- Automatic reset high limit cut-outs (one per element).
- Single point electrical connection for entire terminal unit.
- Positive pressure airflow switch.
- Flanged outlet duct connection.
- Terminal unit with coil is ETL Listed as an assembly.
- Controls mounted as standard on RH side as shown. Terminals ordered with LH controls (optional) are inverted and discharge duct hanging elevation will therefore change.

Voltage:

Single phase, 60 Hz.

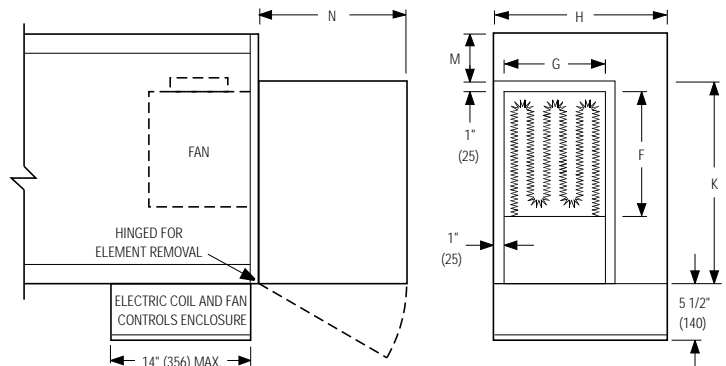
- 208V 240V 277V

Three phase, 60 Hz.

- 208V 480V (4 wire wye).

Options:

- Toggle disconnect switch (includes fan).
 Door interlock disconnect switch.
 Mercury contactors.
 Power circuit fusing.
 Class 'A' 80/20 Ni./Ch. wire.
 Dust tight construction.
 Manual reset secondary thermal cut out.



Unit Size	Imperial Units (inches)					Metric Units (mm)				
	Outlet Duct Size F x G	K	H	M	N	Outlet Duct Size F x G	K	H	M	N
1	10 1/4 x 10 1/2	15 1/2	14	2 1/2	12 1/2	260 x 267	394	356	64	318
3	10 1/4 x 10 1/2	15 1/2	18	2 1/2	15 1/4	260 x 267	394	457	64	387
5	14 1/4 x 11 3/4	22	18	4	15 1/4	362 x 298	559	457	102	387

Page 2 of 2.

Dimensions are in inches (mm).

SCHEDULE TYPE:				
PROJECT:				
ENGINEER:	DATE	B SERIES	SUPERSEDES	DRAWING NO.
CONTRACTOR:	4 - 20 - 10	3500	10 - 27 - 09	35S-3A