



FAN POWERED TERMINAL UNIT
SERIES FLOW • CONSTANT VOLUME
MODELS: 35S, 35SW AND 35SE • UNIT SIZES 1 – 6
WITH 90° LINE VOLTAGE ENCLOSURE (FN2 OPTION)

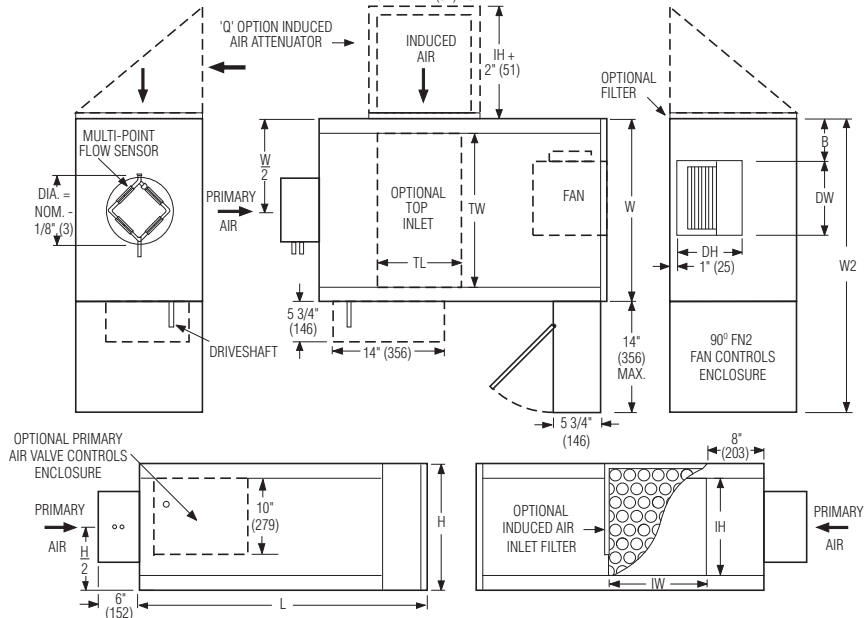
DESCRIPTION:

- 16 ga. (1.6) galvanized steel channel frame with 20 ga. (1.0) casing components.
- 16 ga. (1.6) galvanized steel inclined opposed blade damper. 45° rotation. CW to close.
- Multi-point averaging Diamond Flow sensor.
- Full size access panels on three sides.
- Energy efficient PSC fan motor with overload protection.
- Solid state fan speed controller with minimum voltage stop.
- 3/4" (19) dual density insulation, exposed edges coated to prevent air erosion. Meets requirements of NFPA 90A and UL 181.
- Single point electrical and/or pneumatic main air connection.
- Discharge opening for flanged duct connection.
- Full primary air valve low voltage enclosure for factory mounted DDC and analog electronic controls.
- FN2 line voltage enclosure incorporates a hinged access door opening upstream that helps ensure NEC clearance requirements and reduces footprint.
- Controls mounted as standard on RH side as shown. Terminals ordered with LH controls (optional) are inverted and discharge duct hanging elevation will therefore change.

OPTIONS:

- 'Q' Option – Induced Air Inlet Attenuator.
- Filter frame and 1" (25) disposable filter.
- Toggle disconnect switch.
- Steri-liner.
- Fiber-free liner.
- Solid metal liner.
- Perforated metal liner.
- Fan unit fusing.
- Hanger brackets.
- Top entry induced air inlet.
- Left-hand controls location.
- Special features

Model 35S and Basic Unit



Dimensional Data. Imperial Units (inches)

Unit Size	Inlet Size	W	W2	H	L	B	Induced Air Inlet		Outlet Discharge DW x DH	Filter Size	
							Side (std.) IW x IH	Top (opt.) TL x TW		Side Inlet (std.)	Top Inlet (opt.)
1	5, 6	18	32	14	36	3 1/2	8 x 10	10 x 14	7 1/4 x 10 1/2	10 x 12	14 x 16
2	6, 8	18	32	14	36	3 1/2	8 x 10	10 x 14	9 1/4 x 10 1/2	10 x 12	14 x 16
3	6, 8, 10, 12	18	32	18	36	3 1/2	12 x 14	14 x 14	9 1/4 x 10 1/2	14 x 16	16 x 16
4	8, 10, 12, 14	26	40	18	41	6	14 x 14	12 x 22	12 x 10 1/2	16 x 16	16 x 25
5	10, 12, 14	26	40	18	41	5	14 x 14	12 x 22	13 1/4 x 11 1/2	16 x 16	16 x 25
6	12, 14, 16	30	44	19	44	6	16 x 15	14 x 26	13 1/4 x 11 1/2	17 x 18	18 x 28

Dimensional Data. Metric Units (mm)

Unit Size	Inlet Size	W	W2	H	L	B	Induced Air Inlet		Outlet Discharge DW x DH	Filter Size	
							Side (std.) IW x IH	Top (opt.) TL x TW		Side Inlet (std.)	Top Inlet (opt.)
1	127, 152	457	813	356	914	89	203 x 254	254 x 356	184 x 267	254 x 305	356 x 406
2	152, 203	457	813	356	914	89	203 x 254	254 x 356	235 x 267	254 x 305	356 x 406
3	152, 203, 254, 305	457	813	457	914	89	305 x 356	356 x 356	235 x 267	356 x 406	406 x 406
4	203, 254, 305, 356	660	1016	457	1041	152	356 x 356	305 x 559	305 x 267	406 x 406	406 x 635
5	254, 305, 356	660	1016	457	1041	127	356 x 356	305 x 559	337 x 292	406 x 406	406 x 635
6	305, 356	762	1118	483	1118	152	406 x 381	356 x 660	337 x 292	432 x 457	457 x 711

Electrical Data

Unit Size	Motor H.P.	PSC Motor FLA		
		120/1/60	208/1/60	277/1/60
1	1/10	3.0	2.0	0.9
2	1/10	3.3	2.0	1.0
3	1/4	5.8	3.6	1.8
4	1/3	6.2	4.1	2.0
5	1/2	10.1	6.5	3.3
6	3/4	13.4	8.4	4.5

FLA = Full load amperage



For heat options; see page 2.
 Dimensions are in inches (mm).

SCHEDULE TYPE:

PROJECT:

ENGINEER:

CONTRACTOR:

DATE	B SERIES	SUPERSEDES	DRAWING NO.
11 - 2 - 09	3500	9 - 9 - 08	35S-5A



FAN POWERED TERMINAL UNIT HEAT ACCESSORIES

MODELS: 35SW AND 35SE • UNIT SIZE 1 – 6
WITH 90° LINE VOLTAGE ENCLOSURE (FN2 OPTION)

Hot Water Coil Section Model 35SW

Standard Features:

- Coil section installed on unit discharge.
- Coil (and header on multi-circuit units) is installed in insulated casing for increased thermal efficiency.
- 1/2" (13) copper tubes.
- Aluminum ripple fins.
- Sweat Connections: Size 1, 2 and 3 one row, 1/2" (13) O.D. male solder. All others 7/8" (22) O.D. male solder.
- Top and bottom access panels for inspection and coil cleaning.
- Flanged outlet duct connection.

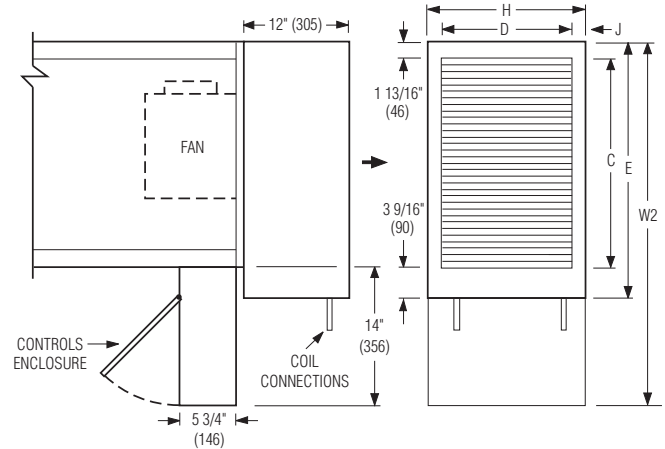
Coil Rows:

- 1-Row 2-Row 3-Row

Coil Hand Connections:

(Looking in direction of airflow).

- Right hand (illustrated). Standard.
 Left hand. Optional.

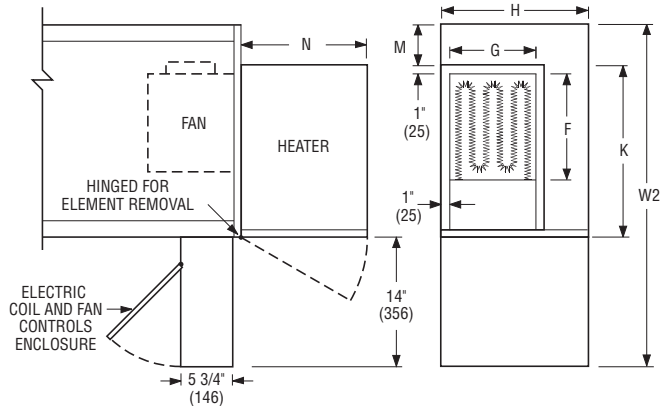


Unit Size	Imperial Units (inches)					Metric Units (mm)				
	Outlet Duct Size C x D	W2	E	H	J	Outlet Duct Size C x D	W2	H	M	N
1, 2	16 x 12 1/8	32	21 3/8	14	15/16	406 x 308	813	543	356	24
3	16 x 14 7/8	32	21 3/8	18	1 9/16	406 x 378	813	746	356	40
4, 5	24 x 14 7/8	40	29 3/8	18	1 9/16	610 x 378	1016	746	457	40
6	28 x 17 1/8	44	33 3/8	19	15/16	711 x 435	1118	848	483	24

Electric Coil Section Model 35SE

Standard Features:

- Unique hinged heater design permits easy access, removal and replacement of heater element without disturbing ductwork.
- Coil installed on unit discharge.
- Insulated coil element wrapper.
- Automatic reset high limit cut-outs (one per element).
- Single point electrical connection for entire terminal unit.
- Positive pressure airflow switch.
- Flanged outlet duct connection.
- Terminal unit with coil is ETL Listed as an assembly.
- Controls mounted as standard on RH side as shown. Terminals ordered with LH controls (optional) are inverted and discharge duct hanging elevation will therefore change.



Voltage:

Single phase, 60 Hz.

- 208V 240V 277V

Three phase, 60 Hz.

- 208V 480V (4 wire wye).

Options:

- Toggle disconnect switch (includes fan).
 Door interlock disconnect switch.
 Mercury contactors.
 Power circuit fusing.
 Class 'A' 80/20 Ni./Ch. wire.
 Dust tight construction.
 Manual reset secondary thermal cut out.

Unit Size	Imperial Units (inches)						Metric Units (mm)					
	Outlet Duct Size F x G	W2	K	H	M	N	Outlet Duct Size F x G	W2	K	H	M	N
1, 2	10 1/4 x 10 1/2	32	15 1/2	14	2 1/2	12 1/2	260 x 267	813	394	356	64	318
3	10 1/4 x 10 1/2	32	15 1/2	18	2 1/2	15 1/4	260 x 267	813	394	457	64	387
4	13 x 10 1/2	40	21	18	5	15 1/4	330 x 267	1016	533	457	127	387
5	14 1/4 x 11 3/4	40	22	18	4	15 1/4	362 x 298	1016	559	457	102	387
6	14 1/4 x 11 3/4	44	25	19	5	15 1/4	362 x 298	1118	635	483	127	387

SCHEDULE TYPE:

PROJECT:

ENGINEER:

CONTRACTOR:

Page 2 of 2.
Dimensions are in inches (mm).

DATE

B SERIES

SUPERSEDES

DRAWING NO.

11 - 2 - 09

3500

9 - 9 - 08

35S-5A