

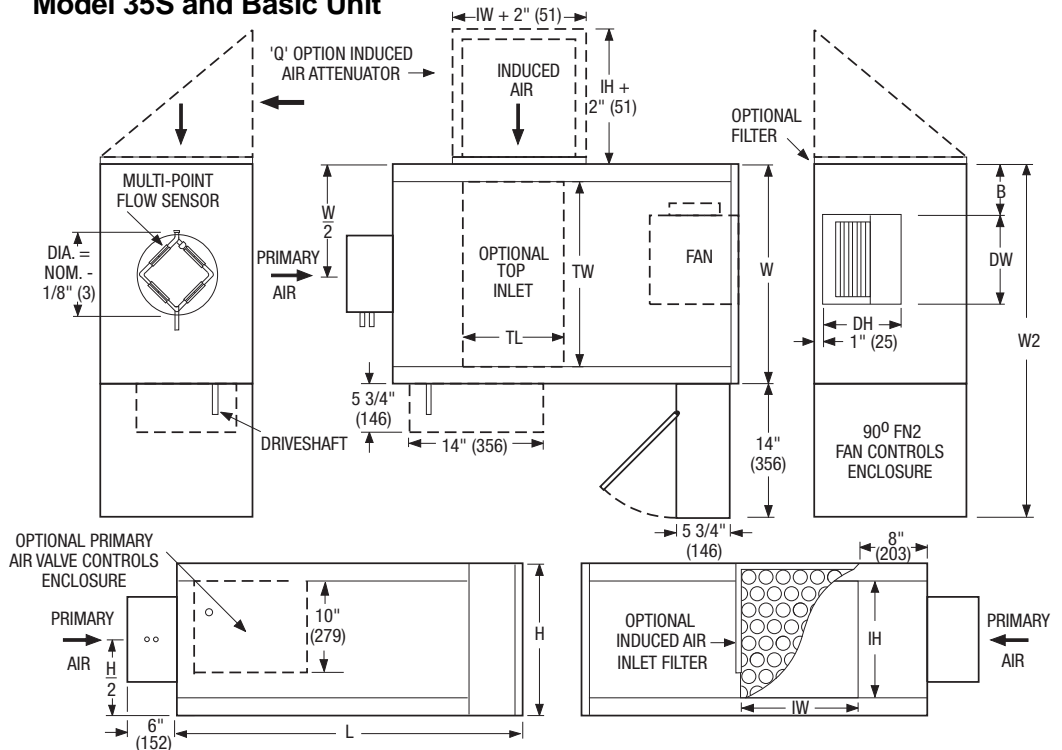


FAN POWERED TERMINAL UNIT WITH ECM MOTOR
SERIES FLOW • CONSTANT VOLUME
MODELS: 35S, 35SW AND 35SE • UNIT SIZES 1, 3 & 5
WITH 90° LINE VOLTAGE ENCLOSURE (FN2 OPTION)

DESCRIPTION:

- 16 ga. (1.6) galvanized steel channel frame with 20 ga. (1.0) casing components.
- 16 ga. (1.6) galvanized steel inclined opposed blade damper. 45° rotation. CW to close.
- Multi-point averaging Diamond Flow sensor.
- Full size access panels on three sides.
- Ultra-high efficiency ECM fan motor. EPIC fan volume controller.
- 3/4" (19) dual density insulation, exposed edges coated to prevent air erosion. Meets requirements of NFPA 90A and UL 181.
- Single point electrical and/or pneumatic main air connection.
- Discharge opening for flanged duct connection.
- Full primary air valve low voltage enclosure for factory mounted DDC and analog electronic controls.
- FN2 line voltage enclosure incorporates a hinged access door opening upstream that helps ensure NEC clearance requirements and reduces footprint.
- Controls mounted as standard on RH side as shown. Terminals ordered with LH controls (optional) are inverted and discharge duct hanging elevation will therefore change.

Model 35S and Basic Unit



Dimensional Data. Imperial Units (inches)

Unit Size	Inlet Size	W	W2	H	L	B	Induced Air Inlet		Outlet Discharge DW x DH	Filter Size	
							Side (std.) IW x IH	Top (opt.) TL x TW		Side Inlet (std.)	Top Inlet (opt.)
1	5, 6, 7, 8	18	32	14	36	6	8 x 10	10 x 14	7 1/4 x 10 1/2	10 x 12	14 x 16
3	6, 8, 10, 12	18	32	18	36	3 1/2	12 x 14	14 x 14	9 1/4 x 10 1/2	14 x 16	16 x 16
5	10, 12, 14	26	40	18	41	5	14 x 14	12 x 22	13 1/4 x 11 1/2	16 x 16	16 x 25

Dimensional Data. Metric Units (mm)

Unit Size	Inlet Size	W	W2	H	L	B	Induced Air Inlet		Outlet Discharge DW x DH	Filter Size	
							Side (std.) IW x IH	Top (opt.) TL x TW		Side Inlet (std.)	Top Inlet (opt.)
1	127, 152, 178, 203	457	813	356	914	152	203 x 254	254 x 356	184 x 267	254 x 305	356 x 406
3	152, 203, 254, 305	457	813	457	914	89	305 x 356	356 x 356	235 x 267	356 x 406	406 x 406
5	254, 305, 356	660	1016	457	1041	127	356 x 356	305 x 559	337 x 292	406 x 406	406 x 635

Electrical Data

Unit Size	Motor H.P.	ECM FLA			
		120/1/60	208/1/60	240/1/60	277/1/60
1	*	2.8	1.9	1.7	1.6
3	*	5.7	3.4	3.5	3.1
5	*	10.9	7.4	7.0	6.1

* The ECM is a variable horsepower motor. Refer to Selectwoks Schedule. FLA = Full load amperage



For heat options; see page 2. Dimensions are in inches (mm).

SCHEDULE TYPE:	
PROJECT:	
ENGINEER:	
CONTRACTOR:	

DATE	B SERIES	SUPERSEDES	DRAWING NO.
4 - 20 - 10	3500	10 - 27 - 09	35S-7A



**FAN POWERED TERMINAL UNIT WITH ECM MOTOR
HEAT ACCESSORIES
MODELS: 35SW AND 35SE • UNIT SIZES 1, 3 & 5
WITH 90° LINE VOLTAGE ENCLOSURE (FN2 OPTION)**

Hot Water Coil Section Model 35SW

Standard Features:

- Coil section installed on unit discharge.
- Coil (and header on multi-circuit units) is installed in insulated casing for increased thermal efficiency.
- 1/2" (13) copper tubes.
- Aluminum ripple fins.
- Sweat Connections: Size 3 one row 1/2" (13) O.D. male solder. All other 7/8" (22) O.D. male solder.
- Top and bottom access panels for inspection and coil cleaning.
- Flanged outlet duct connection.

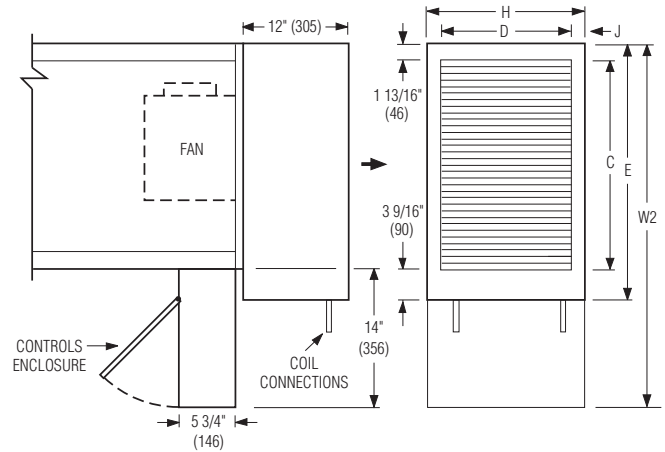
Coil Rows:

- 1-Row 2-Row 3-Row

Coil Hand Connections:

(Looking in direction of airflow).

- Right hand (illustrated). Standard.
 Left hand. Optional.



Unit Size	Imperial Units (inches)					Metric Units (mm)				
	Outlet Duct Size C x D	W2	E	H	J	Outlet Duct Size C x D	W2	E	H	J
1	16 x 12 1/8	32	21 3/8	14	15/16	406 x 308	813	543	356	24
3	16 x 14 7/8	32	21 3/8	18	1 9/16	406 x 378	813	543	457	40
5	24 x 14 7/8	40	29 3/8	18	1 9/16	610 x 378	1016	746	457	40

Electric Coil Section Model 35SE

Standard Features:

- Unique, hinged heater design permits easy access, removal and replacement of heater element without disturbing ductwork.
- Coil installed on unit discharge.
- Insulated coil element wrapper.
- Automatic reset high limit cut-outs (one per element).
- Single point electrical connection for entire terminal unit.
- Positive pressure airflow switch.
- Flanged outlet duct connection.
- Terminal unit with coil is ETL Listed as an assembly.
- Controls mounted as standard on RH side as shown. Terminals ordered with LH controls (optional) are inverted and discharge duct hanging elevation will therefore change.

Voltage:

Single phase, 60 Hz.

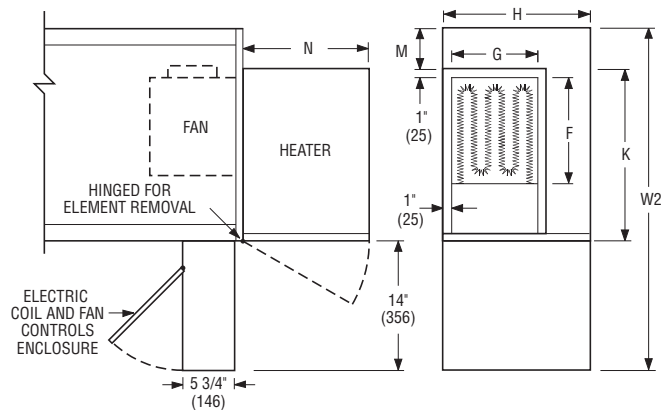
- 208V 240V 277V

Three phase, 60 Hz.

- 208V 480V (4 wire wye).

Options:

- Toggle disconnect switch (includes fan).
 Door interlock disconnect switch.
 Mercury contactors.
 Power circuit fusing.
 Class 'A' 80/20 Ni./Ch. wire.
 Dust tight construction.
 Manual reset secondary thermal cut out.



Unit Size	Imperial Units (inches)						Metric Units (mm)					
	Outlet Duct Size F x G	W2	K	H	M	N	Outlet Duct Size F x G	W2	K	H	M	N
1	10 1/4 x 10 1/2	32	15 1/2	14	2 1/2	12 1/2	260 x 267	813	394	356	64	318
3	10 1/4 x 10 1/2	32	15 1/2	18	2 1/2	15 1/4	260 x 267	813	394	457	64	387
5	14 1/4 x 11 3/4	40	22	18	4	15 1/4	362 x 298	1016	559	457	102	387

SCHEDULE TYPE:

PROJECT:

ENGINEER:

CONTRACTOR:

Page 2 of 2.
Dimensions are in inches (mm).

DATE

B SERIES

SUPERSEDES

DRAWING NO.

4 - 20 - 10

3500

10 - 27 - 09

35S-7A