



FAN POWERED TERMINAL UNIT
 'STEALTH' • SERIES FLOW • CONSTANT VOLUME
 MODELS: 35SST, 35SWST AND 35SEST • UNIT SIZES 1 – 6

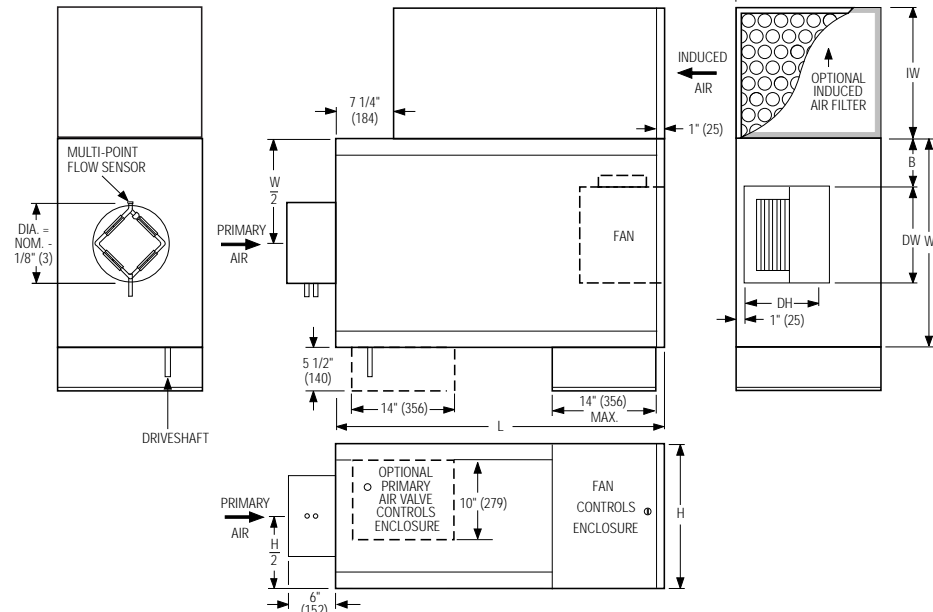
DESCRIPTION:

- 16 ga. (1.6) galvanized steel channel frame with 20 ga. (1.0) casing components.
- 16 ga. (1.6) galvanized steel inclined opposed blade damper. 45° rotation. CW to close.
- 'Stealth' tuned inlet attenuator.
- Multi-point averaging Diamond Flow sensor.
- Universal access. Panels on all 4 sides.
- Energy efficient PSC fan motor with overload protection.
- Solid state fan speed controller with minimum voltage stop.
- 3/4" (19) dual density insulation, exposed edges coated to prevent air erosion. Meets requirements of NFPA 90A and UL 181.
- Single point electrical and/or pneumatic main air connection.
- Discharge opening for flanged duct connection.
- Full primary air valve low voltage enclosure for factory mounted DDC and analog electronic controls.
- Controls mounted as standard on RH side as shown. Terminals ordered with LH controls (optional) are inverted and discharge duct hanging elevation will therefore change.

OPTIONS:

- Filter frame and 1" (25) disposable filter.
- Toggle disconnect switch.
- Steri-liner.
- Fiber-free liner.
- Solid metal liner.
- Perforated metal liner.
- Fan unit fusing.
- Hanger brackets.
- Left-hand controls location.
- Special features _____.

Model 35SST and Basic Unit



Dimensional Data. Imperial Units (inches)

Unit Size	Inlet Size	W	H	L	B	Induced Air Inlet IW x IH	Outlet Discharge DW x DH	Filter Size
1	5, 6	18	14	36	3 1/2	9 x 14	7 1/4 x 10 1/2	10 x 14
2	6, 8	18	14	36	3 1/2	9 x 14	9 1/4 x 10 1/2	10 x 14
3	6, 8, 10, 12	18	18	36	3 1/2	11 x 18	9 1/4 x 10 1/2	12 x 18
4	8, 10, 12, 14	26	18	41	6	15 3/4 x 14	12 x 10 1/2	16 x 14
5	10, 12, 14	26	18	41	5	14 1/2 x 18	13 1/4 x 11 1/2	14 x 18
6	12, 14, 16	30	19	44	6	17 1/2 x 19	13 1/4 x 11 1/2	18 x 19

Dimensional Data. Metric Units (mm)

Unit Size	Inlet Size	W	H	L	B	Induced Air Inlet IW x IH	Outlet Discharge DW x DH	Filter Size
1	127, 152	457	356	914	89	229 x 356	184 x 267	254 x 356
2	152, 203	457	356	914	89	229 x 356	235 x 267	254 x 356
3	152, 203, 254, 305	457	457	914	89	279 x 457	235 x 267	305 x 457
4	203, 254, 305, 356	661	457	1041	152	400 x 356	305 x 267	406 x 356
5	254, 305, 356	661	457	1041	127	368 x 457	337 x 292	356 x 457
6	305, 356, 406	762	483	1118	152	444 x 483	337 x 292	457 x 483

Electrical Data

Unit Size	Motor H.P.	PSC Motor FLA		
		120/1/60	208/1/60	277/1/60
1	1/10	3.0	2.0	0.9
2	1/10	3.3	2.0	1.0
3	1/4	5.8	3.6	1.8
4	1/3	6.2	4.1	2.0
5	1/2	10.1	6.5	3.3
6	3/4	13.4	8.4	4.5

FLA = Full load amperage



For heat options; see page 2.
 Dimensions are in inches (mm).

SCHEDULE TYPE:				
PROJECT:				
ENGINEER:		DATE	B SERIES	SUPERSEDES
CONTRACTOR:		11 - 2 - 09	3500	9 - 9 - 08
				DRAWING NO.
				35SST-1A



FAN POWERED TERMINAL UNIT
 'STEALTH' • SERIES FLOW • CONSTANT VOLUME
 HEAT ACCESSORIES
 MODELS: 35SWST AND 35SEST • UNIT SIZES 1 – 6

Hot Water Coil Section
Model 35SWST 'STEALTH'

Standard Features:

- Coil section installed on unit discharge.
- Coil (and header on multi-circuit units) is installed in insulated casing for increased thermal efficiency.
- 1/2" (13) copper tubes.
- Aluminum ripple fins.
- Sweat connections: Size 1, 2 and 3 one row, 1/2" (13) O. D. male solder. All others 7/8" (22) O. D. male solder.
- Top and bottom access panels for inspection and coil cleaning.
- Flanged outlet duct connection.

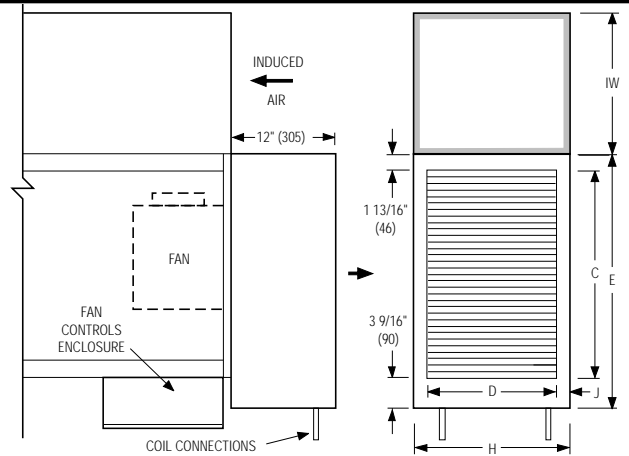
Coil Rows:

- 1-Row 2-Row 3-Row

Coil Hand Connections:

(Looking in direction of airflow).

- Right hand (illustrated). Standard.
- Left hand (terminals are inverted). Optional.
 Connections must be selected same hand as controls enclosure location.



Unit Size	Imperial Units (inches)				Metric Units (mm)			
	Outlet Duct Size C x D	E	H	J	Outlet Duct Size C x D	E	H	J
1, 2	16 x 12 1/8	21 3/8	14	15/16	406 x 308	543	356	24
3	16 x 14 7/8	21 3/8	18	1 9/16	406 x 378	543	457	40
4, 5	24 x 14 7/8	29 3/8	18	1 9/16	610 x 378	746	457	40
6	28 x 17 1/8	33 3/8	19	15/16	711 x 435	848	483	24

Electric Coil Section Model 35SEST 'STEALTH'

Standard Features:

- Unique hinged heater design permits easy access, removal and replacement of heater element without disturbing ductwork.
- Coil installed on unit discharge.
- Insulated coil element wrapper.
- Automatic reset high limit cut-outs (one per element).
- Single point electrical connection for entire terminal unit.
- Positive pressure airflow switch.
- Flanged outlet duct connection.
- Terminal unit with coil is ETL Listed as an assembly.
- Controls mounted as standard on RH side as shown. Terminals ordered with LH controls (optional) are inverted and discharge duct hanging elevation will therefore change.

Voltage:

Single phase, 60 Hz.

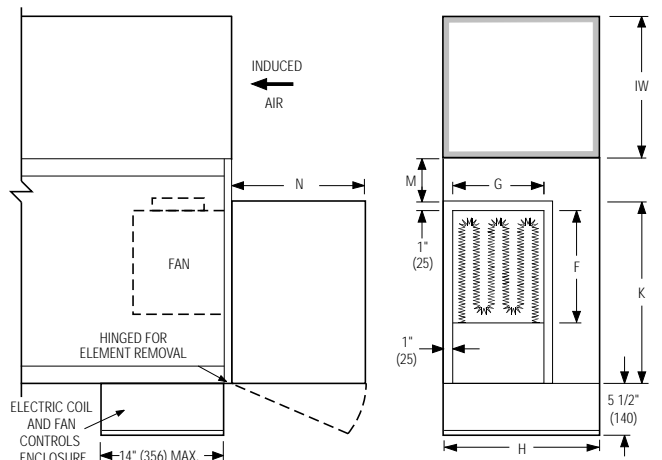
- 208V 240V 277V

Three phase, 60 Hz.

- 208V 480V (4 wire wye).

Options:

- Toggle disconnect switch (includes fan).
- Door interlock disconnect switch.
- Mercury contactors.
- Power circuit fusing.
- Class 'A' 80/20 Ni./Chr. wire.
- Dust tight construction.
- Manual reset secondary thermal cut out.



Unit Size	Imperial Units (inches)					Metric Units (mm)				
	Outlet Duct Size F x G	K	H	M	N	Outlet Duct Size F x G	K	H	M	N
1, 2	10 1/4 x 10 1/2	15 1/2	14	2 1/2	12 1/2	260 x 267	394	356	64	318
3	10 1/4 x 10 1/2	15 1/2	18	2 1/2	15 1/4	260 x 267	394	457	64	387
4	13 x 10 1/2	21	18	5	15 1/4	330 x 267	533	457	127	387
5	14 1/4 x 11 3/4	22	18	4	15 1/4	362 x 298	559	457	102	387
6	14 1/4 x 11 3/4	25	19	5	15 1/4	362 x 298	635	483	127	387

SCHEDULE TYPE:

PROJECT:

ENGINEER:

CONTRACTOR:

Page 2 of 2.
 Dimensions are in inches (mm).

DATE

B SERIES

SUPERSEDES

DRAWING NO.

11 - 2 - 09

3500

9 - 9 - 08

35SST-1A