



**FAN POWERED TERMINAL UNIT WITH ECM MOTOR  
'STEALTH' • SERIES FLOW • CONSTANT VOLUME  
MODELS: 35SST, 35SWST & 35SEST • UNIT SIZES 1, 3 & 5  
WITH 90° LINE VOLTAGE ENCLOSURE (FN2 OPTION)**

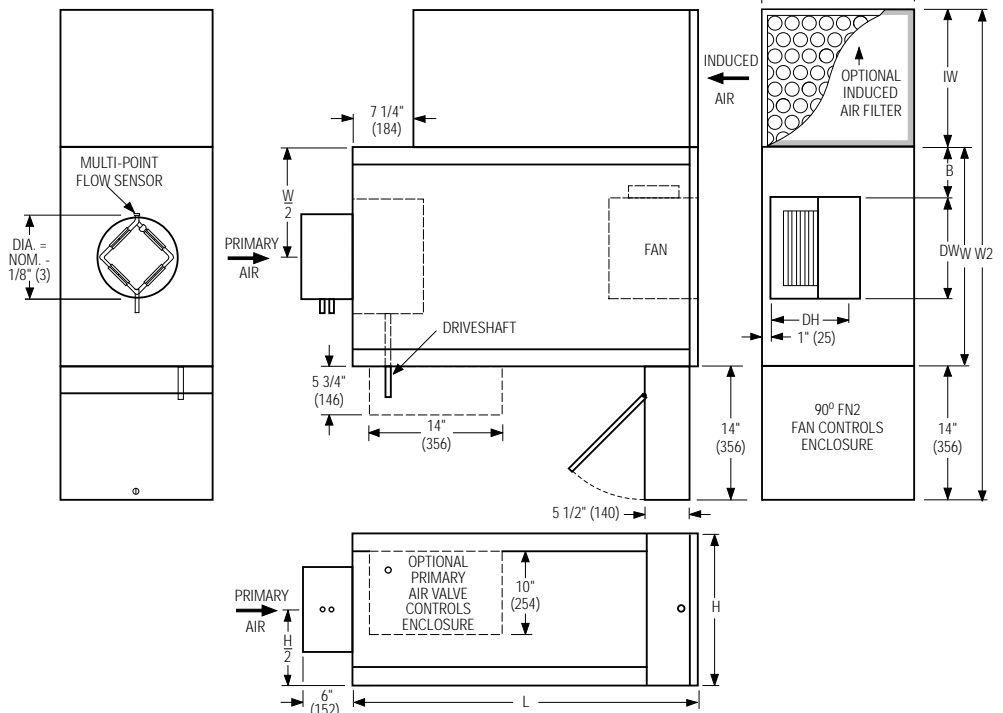
**DESCRIPTION:**

- 16 ga. (1.6) galvanized steel channel frame with 20 ga. (1.0) casing components.
- 16 ga. (1.6) galvanized steel inclined opposed blade damper. 45° rotation. CW to close.
- 'Stealth' tuned inlet attenuator.
- Multi-point averaging Diamond Flow sensor.
- Universal access panels all on 4 sides.
- Ultra energy efficient ECM fan motor with overload protection.
- Solid state Nailor EPIC fan volume controller.
- 3/4" (19) dual density insulation, exposed edges coated to prevent air erosion. Meets requirements of NFPA 90A and UL 181.
- Single point electrical and/or pneumatic main air connection.
- Discharge opening for flanged duct connection.
- Full primary air valve low voltage enclosure for factory mounted DDC and analog electronic controls.
- FN2 line voltage enclosure incorporates a hinged access door opening upstream that helps ensure NEC clearance requirements and reduces footprint.
- Controls side mounted as standard on RH side as shown. Terminals ordered with LH controls (optional) are inverted and discharge duct hanging elevation will therefore change.

**OPTIONS:**

- Filter frame and 1" (25) disposable filter.
- Toggle disconnect switch.
- Steri-liner.
- Fiber-free liner.
- Solid metal liner.
- Perforated metal liner.
- Fan unit fusing.
- Hanger brackets.
- Left-hand controls location.
- Special features \_\_\_\_\_.

**Model 35SST and Basic Unit**



**Dimensional Data. Imperial Units (inches)**

| Unit Size | Inlet Size   | W  | W2     | H  | L  | B     | Induced Air Inlet IW x IH | Outlet Discharge DW x DH | Filter Size |
|-----------|--------------|----|--------|----|----|-------|---------------------------|--------------------------|-------------|
| 1         | 5, 6, 7, 8   | 18 | 41     | 14 | 36 | 6     | 9 x 14                    | 7 1/4 x 10 1/2           | 10 x 14     |
| 3         | 6, 8, 10, 12 | 18 | 43     | 18 | 36 | 3 1/2 | 11 x 18                   | 9 1/4 x 10 1/2           | 12 x 18     |
| 5         | 10, 12, 14   | 26 | 54 1/2 | 18 | 41 | 5     | 14 1/2 x 18               | 13 1/4 x 11 1/2          | 14 x 18     |

**Dimensional Data. Metric Units (mm)**

| Unit Size | Inlet Size         | W   | W2   | H   | L    | B   | Induced Air Inlet IW x IH | Outlet Discharge DW x DH | Filter Size |
|-----------|--------------------|-----|------|-----|------|-----|---------------------------|--------------------------|-------------|
| 1         | 127, 152, 178, 203 | 457 | 1041 | 356 | 914  | 152 | 229 x 356                 | 184 x 267                | 254 x 356   |
| 3         | 152, 203, 254, 305 | 457 | 1092 | 457 | 814  | 89  | 279 x 457                 | 235 x 267                | 305 x 457   |
| 5         | 254, 305, 356      | 661 | 1384 | 457 | 1041 | 127 | 368 x 457                 | 337 x 292                | 356 x 457   |

**Electrical Data**

| Unit Size | Motor H.P. | ECM FLA  |          |          |          |
|-----------|------------|----------|----------|----------|----------|
|           |            | 120/1/60 | 208/1/60 | 240/1/60 | 277/1/60 |
| 1         | *          | 2.8      | 1.9      | 1.7      | 1.6      |
| 3         | *          | 5.7      | 3.4      | 3.5      | 3.1      |
| 5         | *          | 10.9     | 7.4      | 7.0      | 6.1      |

\* The ECM is a variable horsepower motor. Refer to Selectwoks Schedule.  
FLA = Full load amperage



|                       |             |                 |                   |                    |
|-----------------------|-------------|-----------------|-------------------|--------------------|
| <b>SCHEDULE TYPE:</b> |             |                 |                   |                    |
| <b>PROJECT:</b>       |             |                 |                   |                    |
| <b>ENGINEER:</b>      | <b>DATE</b> | <b>B SERIES</b> | <b>SUPERSEDES</b> | <b>DRAWING NO.</b> |
| <b>CONTRACTOR:</b>    | 4 - 20 - 10 | 3500            | 10 - 28 - 09      | 35SST-7A           |



**FAN POWERED TERMINAL UNIT WITH ECM MOTOR 'STEALTH' • SERIES FLOW • CONSTANT VOLUME HEAT ACCESSORIES**  
**MODELS: 35SWST AND 35SEST • UNIT SIZES 1, 3 & 5 WITH 90° LINE VOLTAGE ENCLOSURE (FN2 OPTION)**

**Hot Water Coil Section Model 35SWST**

**Standard Features:**

- Coil section installed on unit discharge.
- Coil (and header on multi-circuit units) is installed in insulated casing for increased thermal efficiency.
- 1/2" (13) copper tubes.
- Aluminum ripple fins.
- Sweat connections: Size 3 one row 1/2" (13) O. D. male solder. All others 7/8" (22) O. D. male solder.
- Top and bottom access panels for inspection and coil cleaning.
- Flanged outlet duct connection.

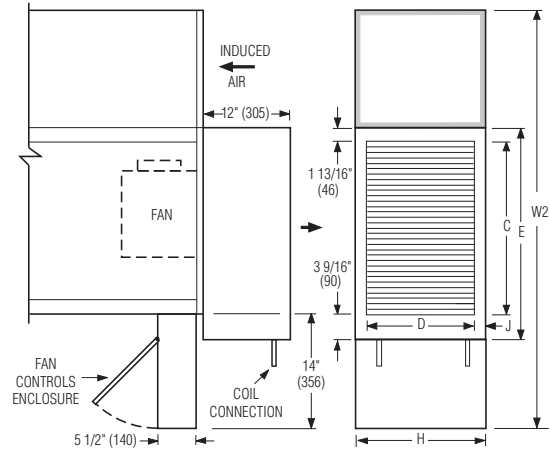
**Coil Rows:**

- 1-Row    2-Row    3-Row

**Coil Hand Connections:**

(Looking in direction of airflow).

- Right hand (illustrated). Standard.  
 Left hand (terminals are inverted). Optional.  
 Connections must be selected same hand as controls enclosure location.



| Unit Size | Imperial Units (inches) |        |    |        |        | Metric Units (mm)      |     |     |      |    |
|-----------|-------------------------|--------|----|--------|--------|------------------------|-----|-----|------|----|
|           | Outlet Duct Size C x D  | E      | H  | W2     | J      | Outlet Duct Size C x D | E   | H   | W2   | J  |
| 1         | 16 x 12 1/8             | 21 3/8 | 14 | 41     | 15/16  | 406 x 308              | 543 | 356 | 1041 | 24 |
| 3         | 16 x 14 7/8             | 21 3/8 | 18 | 43     | 1 9/16 | 406 x 378              | 543 | 457 | 1092 | 40 |
| 5         | 24 x 14 7/8             | 29 3/8 | 18 | 54 1/2 | 1 9/16 | 610 x 378              | 746 | 457 | 1384 | 40 |

**Electric Coil Section Model 35SEST**

**Standard Features:**

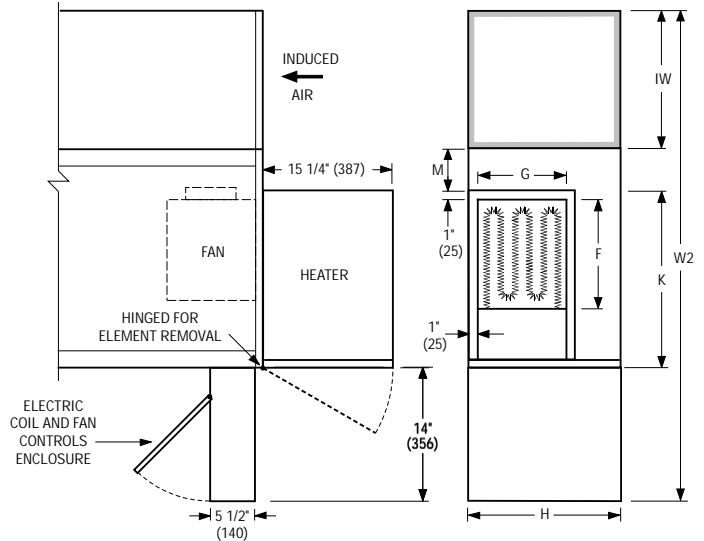
- Unique hinged heater design permits easy access, removal and replacement of heater element without disturbing ductwork.
- Coil installed on unit discharge.
- Insulated coil element wrapper.
- Automatic reset high limit cut-outs (one per element).
- Single point electrical connection for entire terminal unit.
- Positive pressure airflow switch.
- Flanged outlet duct connection.
- Terminal unit with coil is ETL Listed as an assembly.
- Controls mounted as standard on RH side as shown. Terminals ordered with LH controls (optional) are inverted and discharge duct hanging elevation will therefore change.

**Voltage:**

- Single phase, 60 Hz.  
 208V    240V    277V  
 Three phase, 60 Hz.  
 208V    480V (4 wire wye).  
 \_\_\_\_\_

**Options:**

- Toggle disconnect switch (includes fan).  
 Door interlock disconnect switch.  
 Mercury contactors.  
 Power circuit fusing.  
 Class 'A' 80/20 Ni./Ch. wire.  
 Dust tight construction.  
 Manual reset secondary thermal cut out.



| Unit Size | Imperial Units (inches) |        |        |    |       | Metric Units (mm)      |      |     |     |     |
|-----------|-------------------------|--------|--------|----|-------|------------------------|------|-----|-----|-----|
|           | Outlet Duct Size F x G  | W2     | K      | H  | M     | Outlet Duct Size F x G | W2   | K   | H   | M   |
| 1         | 10 1/4 x 10 1/2         | 41     | 15 1/2 | 14 | 2 1/2 | 260 x 267              | 1041 | 394 | 356 | 64  |
| 3         | 10 1/4 x 10 1/2         | 43     | 15 1/2 | 18 | 2 1/2 | 260 x 267              | 1092 | 394 | 457 | 64  |
| 5         | 14 1/4 x 11 3/4         | 54 1/2 | 22     | 18 | 4     | 362 x 298              | 1384 | 558 | 457 | 102 |

**SCHEDULE TYPE:**

**PROJECT:**

**ENGINEER:**

**CONTRACTOR:**

Page 2 of 2.  
 Dimensions are in inches (mm).

| DATE        | B SERIES | SUPERSEDES   | DRAWING NO. |
|-------------|----------|--------------|-------------|
| 4 - 20 - 10 | 3500     | 10 - 28 - 09 | 35SST-7A    |