



**FAN POWERED TERMINAL UNIT WITH ECM MOTOR  
'STEALTH' • SERIES FLOW • CONSTANT VOLUME  
MODELS: 35SST, 35SWST AND 35SEST • UNIT SIZE 7  
WITH 90° LINE VOLTAGE ENCLOSURE (FN2 OPTION)**

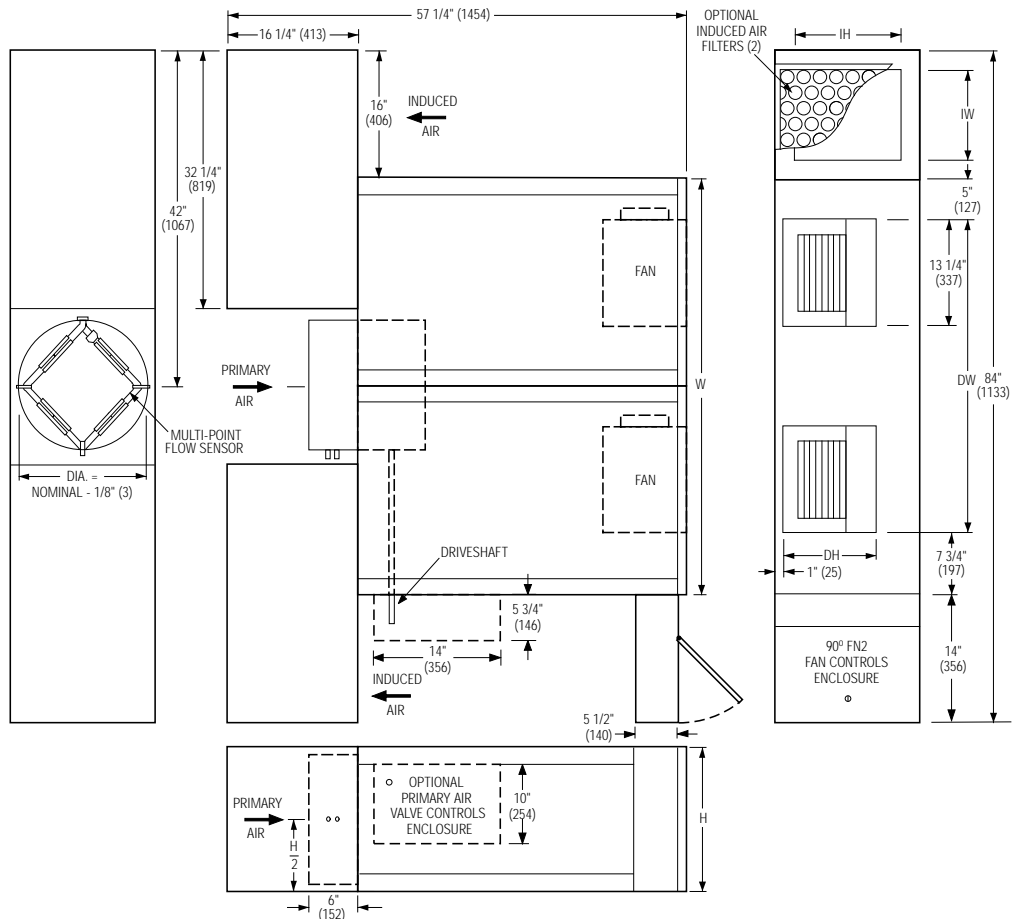
**DESCRIPTION:**

- 16 ga. (1.6) galvanized steel channel frame with 20 ga. (1.0) casing components.
- 16 ga. (1.6) galvanized steel inclined opposed blade damper. 45° rotation. CW to close.
- 'Stealth' tuned inlet attenuators. Shipped loose for field mounting.
- Multi-point averaging Diamond Flow sensor.
- Universal access panels all on 4 sides.
- Ultra energy efficient ECM fan motor with overload protection.
- Solid state Nailor EPIC fan volume controller.
- 3/4" (19) dual density insulation, exposed edges coated to prevent air erosion. Meets requirements of NFPA 90A and UL 181.
- Single point electrical and / or pneumatic main air connection.
- Discharge opening for flanged duct connection.
- Full primary air valve low voltage enclosure for factory mounted DDC and analog electronic controls.
- FN2 line voltage enclosure incorporates a hinged access door opening downstream that helps ensure NEC clearance requirements and reduces footprint.
- Controls side mounted as standard on RH side as shown. Terminals ordered with LH controls (optional) are inverted and discharge duct hanging elevation will therefore change.

**OPTIONS:**

- Filter frame and 1" (25) disposable filter.
- Toggle disconnect switch.
- Fiber-free liner.
- Steri-liner.
- Solid metal liner.
- Perforated metal liner.
- Fan unit fusing.
- Hanger brackets.
- Left-hand controls location.
- Special features

**Model 35SST and Basic Unit**



**Dimensional Data. Imperial Units (inches)**

Unit Size	Inlet Size	W	H	L	Induced Air Inlet IW x IH	Outlet Discharge DW x DH	Filter Size
7	14, 16	52	18	41	11 1/4 x 13 1/4 (2)	39 1/4 x 11 1/2	14 x 14 (2)

**Dimensional Data. Metric Units (mm)**

Unit Size	Inlet Size	W	H	L	Induced Air Inlet IW x IH	Outlet Discharge DW x DH	Filter Size
7	356, 406	1321	457	1041	286 x 337 (2)	997 x 292	356 x 356 (2)

**Electrical Data**

Unit Size	Motor H.P.	ECM FLA			
		120/1/60	208/1/60	240/1/60	277/1/60
7	*	19.2	12.2	11.6	10.0

\* The ECM is a variable horsepower motor. Refer to Selectwoks Schedule. FLA = Full load amperage



<b>SCHEDULE TYPE:</b>				
<b>PROJECT:</b>				
<b>ENGINEER:</b>	<b>DATE</b>	<b>B SERIES</b>	<b>SUPERSEDES</b>	<b>DRAWING NO.</b>
<b>CONTRACTOR:</b>	4 - 20 - 10	3500	9 - 9 - 08	35SST-8A



**FAN POWERED TERMINAL UNIT WITH ECM MOTOR 'STEALTH' • SERIES FLOW • CONSTANT VOLUME HEAT ACCESSORIES**  
**MODELS: 35SWST AND 35SEST • UNIT SIZE 7**  
**WITH 90° LINE VOLTAGE ENCLOSURE (FN2 OPTION)**

**Hot Water Coil Section Model 35SWST**

**Standard Features:**

- Coil section installed on unit discharge.
- Coil and header are installed in insulated casing for increased thermal efficiency.
- 1/2" (13) copper tubes.
- Aluminum ripple fins.
- Sweat connections: One and two row, 7/8" (22) O. D. male solder. Three row 1 3/8" (35) O.D. male solder.
- Top and bottom access panels for inspection and coil cleaning.
- Flanged outlet duct connection.

**Coil Rows:**

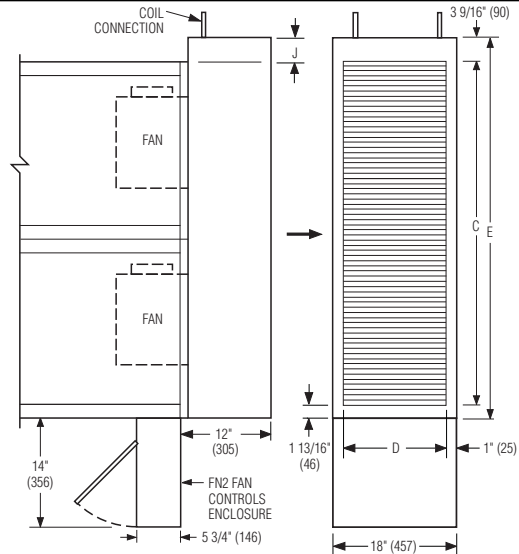
- 1-Row    2-Row    3-Row

**Coil Hand Connections:**

(Looking in direction of airflow).

- Left hand (illustrated). Standard.  
 Right hand (terminals are inverted). Optional.

Connections must be selected opposite hand to FN2 controls enclosure location.



Unit Size	Imperial Units (inches)			Metric Units (mm)		
	Outlet Duct Size C x D	E	J	Outlet Duct Size C x D	E	J
7	50 x 14 7/8	55 3/8	3 3/8	1270 x 378	1407	86

**Electric Coil Section Model 35SEST 'STEALTH'**

**Standard Features:**

- Unique hinged heater design permits easy access, removal and replacement of heater element without disturbing ductwork.
- Coil installed on unit discharge.
- Insulated coil element wrapper.
- Automatic reset high limit cut-outs (one per element).
- Single point electrical connection for entire terminal unit.
- Positive pressure airflow switch.
- Flanged outlet duct connection.
- Terminal unit with coil is ETL Listed as an assembly.
- Controls mounted as standard on RH side as shown. Terminals ordered with LH controls (optional) are inverted and discharge duct hanging elevation will therefore change.

**Voltage:**

Single phase, 60 Hz.

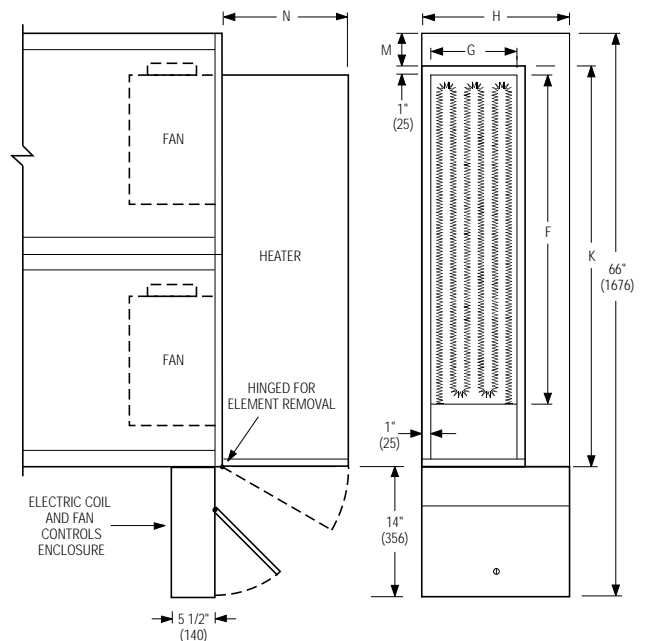
- 208V    240V    277V

Three phase, 60 Hz.

- 208V    480V (4 wire wye).    \_\_\_\_\_

**Options:**

- Toggle disconnect switch (includes fan).
- Door interlock disconnect switch.
- Mercury contactors.
- Power circuit fusing.
- Class 'A' 80/20 Ni./Ch. wire.
- Dust tight construction.
- Manual reset secondary thermal cut out.



Unit Size	Imperial Units (inches)					Metric Units (mm)				
	Outlet Duct Size F x G	K	H	M	N	Outlet Duct Size F x G	K	H	M	N
7	40 1/4 x 11 3/4	48	18	4	15 1/4	1022 x 298	1219	457	102	387

**SCHEDULE TYPE:**

**PROJECT:**

**ENGINEER:**

**CONTRACTOR:**

Page 2 of 2.  
 Dimensions are in inches (mm).

DATE	B SERIES	SUPERSEDES	DRAWING NO.
4 - 20 - 10	3500	9 - 9 - 08	35SST-8A