

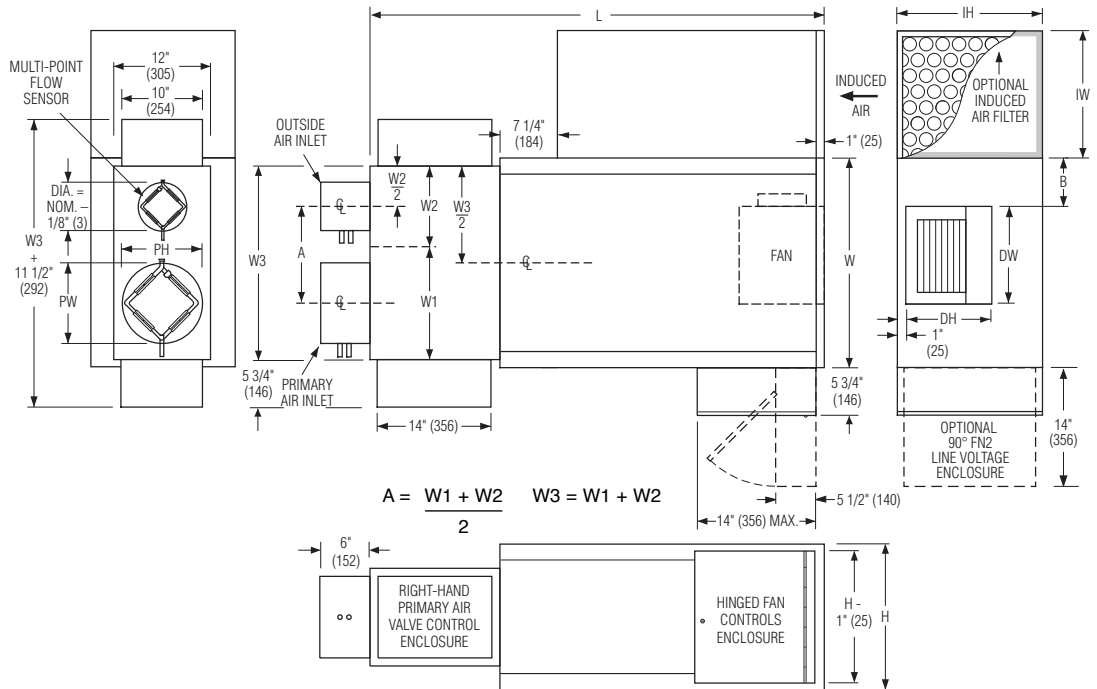


**FAN POWERED TERMINAL UNIT WITH OUTSIDE AIR INLET  
ECM MOTOR  
'STEALTH' SERIES FLOW • CONSTANT VOLUME  
MODELS: 35SST-OAI, 35SWST-OAI AND 35SEST-OAI  
UNIT SIZES 3 & 5**

**DESCRIPTION:**

- 16 ga. (1.6) galvanized steel channel frame with 20 ga. (1.0) casing components.
- 16 ga. (1.6) galvanized steel inclined opposed blade dampers. 45° rotation. RH CW to close. LH CCW to close.
- 'Stealth' tuned inlet attenuator.
- Separate outside (ventilation) air inlet.
- Multi-point averaging Diamond Flow sensors.
- Access panels on all 4 sides.
- Ultra energy efficient ECM fan motor. EPIC fan volume controller.
- 3/4" (19) dual density insulation, coated to prevent air erosion, meets requirements of NFPA 90A and UL 181.
- Single point electrical and/or pneumatic main air connection.

**Model 35SST-OAI**



- Discharge opening for flanged duct connection.
- Full enclosure for factory mounted DDC and analog electronic controls.
- Choice of right or left-hand primary inlet location. Hand of unit is determined by location of primary inlet looking in direction of airflow. RH illustrated.

**Dimensional Data**

Unit Size	Inlet Size	Outside Inlet Size	W	H	L	B	Induced Air Inlet		Outlet Discharge DW x DH	Filter Size Side Inlet (std.)
							Side (std.) IW x IH	Top (opt.) TL x TW		
3	6, 8, 10 (152, 203, 254)	4, 5, 6 (102, 127, 152)	18 (457)	18 (457)	15 1/2 (1308)	3 1/2 (89)	11 x 18 (279 x 457)	14 x 14 (356 x 356)	9 1/2 x 10 1/2 (253 x 267)	12 x 18 (305 x 457)
5	10, 12*, 14* (254, 305, 356)	6, 7, 8 (152, 178, 203)	26 (660)	18 (457)	56 1/2 (1435)	5 (127)	14 1/2 x 18 (368 x 457)	12 x 22 (305 x 559)	13 3/4 x 11 1/2 (337 x 292)	14 x 18 (356 x 457)

**Primary/Inlet Dimensions**

Size	W1 or W2
12*	18 (457)
14*	24 (610)

\* Flat oval inlets

**Oval Inlet Dimensions**

Size	PW x PH
12*	12 13/16 x 9 13/16 (329 x 249)
14*	16 1/16 x 9 13/16 (408 x 249)

**Electrical Data**

Unit Size	Motor H.P.	ECM FLA			
		120/1/60	208/1/60	240/1/60	277/1/60
3	*	5.7	3.4	7.0	6.1
5	*	10.9	7.4	11.6	10.0

\* The ECM is a variable horsepower motor. Refer to Selectwoks Schedule. FLA = Full load amperage

**OPTIONS:**

- FN2 90° Line Voltage Enclosure
- FN3 Remote Line Voltage Controls Enclosure (See submittal FN3)
- Filter frame and 1" (25) disposable filter.
- Toggle disconnect switch.
- Steri-liner.
- Fiber-free liner.
- Solid metal liner.
- Perforated metal liner.
- Fan unit fusing.
- Hanger brackets.
- Top induced air inlet.
- Special features



**SCHEDULE TYPE**

**PROJECT**

**ENGINEER**

**CONTRACTOR**

For heat options, see page 2.  
Dimensions are in inches (mm).

DATE	B SERIES	SUPERSEDES	DRAWING NO.
10 - 21 - 11	3500	NEW	35SST-OAI-2



**FAN POWERED TERMINAL UNIT WITH OUTSIDE AIR INLET  
ECM MOTOR  
'STEALTH' SERIES FLOW • CONSTANT VOLUME  
HEAT ACCESSORIES  
MODELS: 35SWST-OAI AND 35SEST-OAI • UNIT SIZES 3 & 5**

**Hot Water Coil Section  
Model 35SWST-OAI 'STEALTH'**

**Standard Features:**

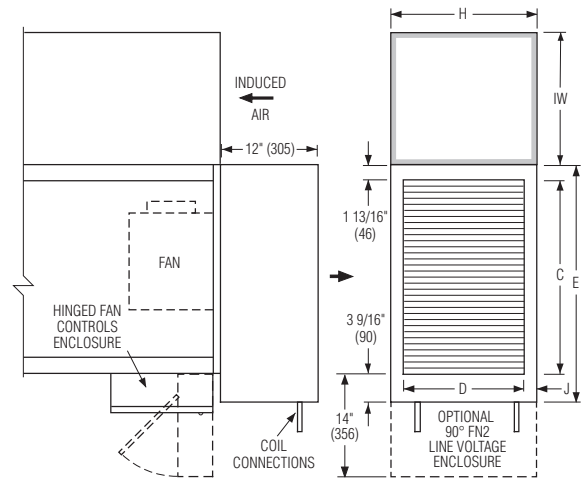
- Coil section installed on unit discharge.
- Coil (and header on multi-circuit units) is installed in insulated casing for increased thermal efficiency.
- 1/2" (13) copper tubes.
- Aluminum ripple fins.
- Sweat Connections: Size 3 one row, 1/2" (13) O.D. male solder. All others 7/8" (22) O.D. male solder.
- Top and bottom access panels for inspection and coil cleaning.
- Flanged outlet duct connection.

**Coil Rows:**

- 1-Row    2-Row    3-Row

**Coil Hand Connections:**

- (Looking in direction of airflow).  
 Right hand (illustrated). Standard.  
 Left hand. Optional.



Unit Size	Outlet Duct Size C x D	E	H	J
3	16 x 14 1/4 (406 x 378)	21 3/8 (543)	18 (457)	1 1/8 (40)
5	24 x 14 1/4 (610 x 378)	29 3/8 (746)	18 (457)	1 1/8 (40)

**Electric Coil Section Model 35SEST-OAI 'STEALTH'**

**Standard Features:**

- Unique hinged heater design permits easy access, removal and replacement of heater element without disturbing ductwork.
- Coil installed on unit discharge.
- Insulated coil element wrapper.
- Automatic reset high limit cut-outs (one per element).
- Single point electrical connection (except 600V).
- Positive pressure airflow switch.
- Flanged outlet duct connection.
- Terminal unit with coil is ETL Listed as an assembly.
- Controls mounted as standard on RH side as shown. Terminals ordered with LH controls (optional) are inverted and discharge duct hanging elevation will therefore change.

**Voltage:**

Single phase, 60 Hz.

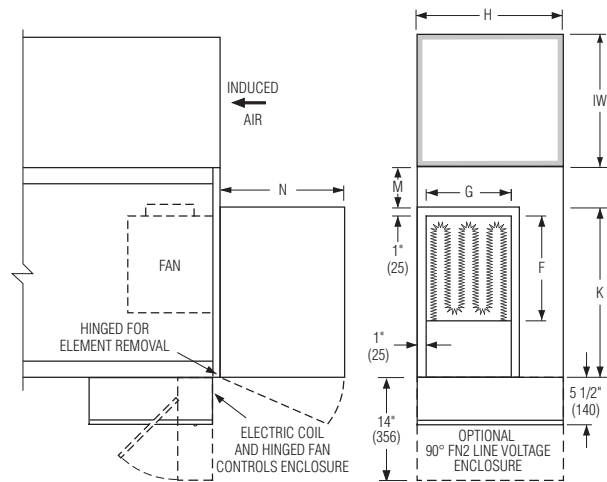
- 120V    208V    240V    277V

Three phase, 60 Hz.

- 208V    480V (4 wire wye).  
 600V (Dual point connection)    \_\_\_\_\_

**Options:**

- Toggle disconnect switch (includes fan).
- Door interlock disconnect switch.
- SCR Control.
- Mercury contactors.
- Power circuit fusing.
- Class 'A' 80/20 Ni./Ch. wire.
- Dust tight construction.
- Manual reset secondary thermal cut out.



Unit Size	Outlet Duct Size F x G	K	H	M	N
3	10 1/4 x 10 1/2 (260 x 267)	15 1/2 (394)	18 (457)	2 1/2 (64)	15 1/4 (387)
5	14 1/4 x 11 3/4 (362 x 298)	22 (559)	18 (457)	4 (102)	15 1/4 (387)

**SCHEDULE TYPE**

**PROJECT**

**ENGINEER**

**CONTRACTOR**

Page 2 of 2.  
Dimensions are in inches (mm).

**DATE**

**B SERIES**

**SUPERSEDES**

**DRAWING NO.**

10 - 21 - 11

3500

NEW

35SST-OAI-2